



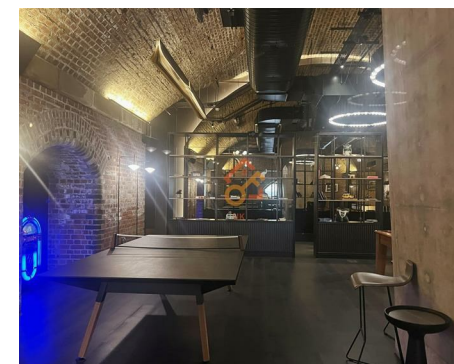
Let **UK** Home

2 Bedrooms

Flat

Located  
in Manchester

£2,150 Per Month



[pmadmin@letukhome.co.uk](mailto:pmadmin@letukhome.co.uk)

<https://www.letukhome.co.uk/>

01615219812



# 42 Great Bridgewater Street Manchester

M1 5LG



Let UK Home are excited to offer this stunning two bedroom apartment in Viadux development in Manchester.

This property comprises a large bright open plan kitchen and living room, two double bedrooms with fitted wardrobes (master en-suite), a large family sized bathroom and ample storage.

Residents will enjoy an exceptional lifestyle, with access to an extensive suite of private amenities including a swimming pool, spa, state-of-the-art gymnasium, wellness suite, private cinema, elegant residents' lounge, co-working spaces, and a dedicated full-time concierge, all designed to provide comfort, convenience, and elevated living.

Located in the heart of a bustling metropolis, Viadux Apartments on Great Bridgewater Street offers its residents a serene and elegant private space amidst the vibrancy of city living. The surrounding area is replete with amenities, including chic shopping centers, gourmet restaurants, and various entertainment options, as well as close proximity to business facilities, catering to both lifestyle and work requirements. The area is filled with high-end entertainment and commercial venues, within walking distance to various upscale dining options such as Tattu (Asian cuisine), La Bandera (Spanish brunch), Zouk (Indian brunch), FoodWell (healthy dining), and Albert's Schloss (German restaurant). Chinatown is also just a short distance away, making it very convenient.

From the apartment, it is easy to reach prestigious universities such as the

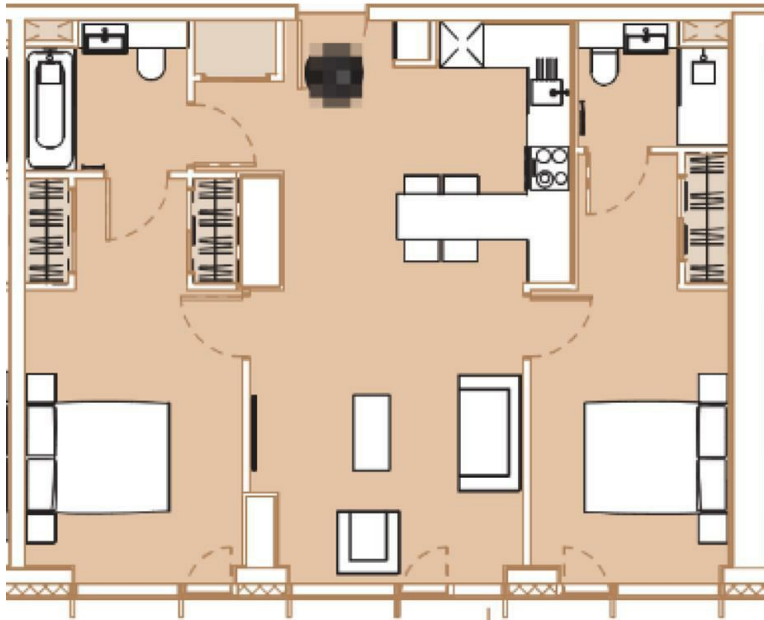
# 42 Great Bridgewater Street Manchester

£2,150 Per Month



- 3rd Floor
- 24h Security
- Swimming Pool
- Residents Lounge
- EPC Rating: B
- Concierge Service
- Cinema & Game Room
- The Gym
- Co-working Space





**2 BED**

803 sq.ft



Let **UK** Home

1/F, St James Tower 7 Charlotte  
Street  
Manchester  
M1 4DZ

01615219812

[pmadmin@letukhome.co.uk](mailto:pmadmin@letukhome.co.uk)

**Council Tax Band: E**

**Local Authority:**

Agents Note: Whilst every care has been taken to prepare these particulars, they are for guidance purposes only. All measurements are approximate and are for general guidance purposes only and whilst every care has been taken to ensure their accuracy, they should not be relied upon and potential buyers/tenants are advised to recheck the measurements.

Energy Efficiency Rating		Current	Potential
Very energy efficient - lower running costs			
(92 plus) <b>A</b>			
(81-91) <b>B</b>		85	85
(69-80) <b>C</b>			
(55-68) <b>D</b>			
(39-54) <b>E</b>			
(21-38) <b>F</b>			
(1-20) <b>G</b>			
Not energy efficient - higher running costs			
<b>England &amp; Wales</b>	EU Directive 2002/91/EC		

<https://www.letukhome.co.uk/>