



Guide Price
£600,000

Freehold

4x  3x  2x 

**Hornbeam Close,
Paddock Wood,
Tonbridge, Kent, TN12**

OVER 60?

Secure this property
for up to **59% less!**

Wards
Helping you move forwards



Main features

- Amazing size detached property
- Ample off street parking with a double garage
- Perfect family home in a peaceful cul-de-sac
- Practical and modern throughout
- Ideally located in the heart of paddock wood, close to the high street station and school.

Accommodation

GROUND FLOOR

- Entrance Hall
- Lounge: 15'9 x 10'4 (4.80m x 3.15m)
- Dining Room: 13'1 x 9'7 (3.99m x 2.92m)
- Kitchen: 11'1 x 8'9 (3.38m x 2.67m)
- Cloakroom
- Utility Area: 6'2 x 4'6 (1.88m x 1.37m)

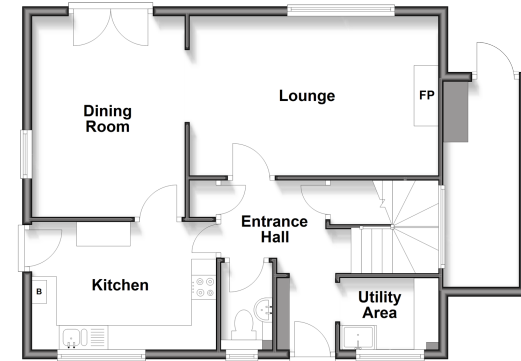
FIRST FLOOR

- Landing
- Bedroom 1: 10'5 x 9'2 (3.18m x 2.80m)
- En suite Shower Room
- Bedroom 3: 9'8 x 9'7 (2.95m x 2.92m)
- Bathroom
- Bedroom 2: 10'4 x 9'4 (3.15m x 2.85m)
- Bedroom 4: 9'9 x 5'9 (2.97m x 1.75m)

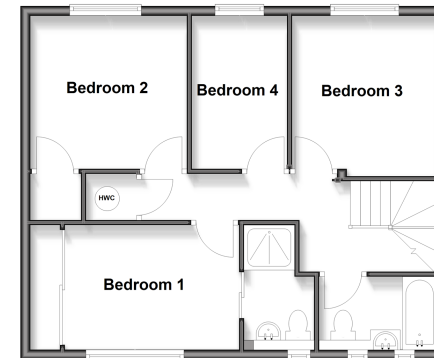
OUTSIDE

- Rear Garden
- Double Garage & Driveway

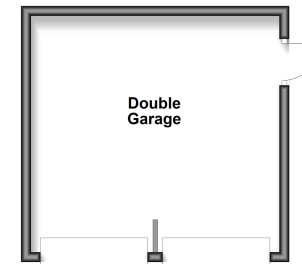
Ground Floor
Approx. 64.2 sq. metres (691.5 sq. feet)



First Floor
Approx. 57.3 sq. metres (616.3 sq. feet)



Outbuilding
Approx. 24.9 sq. metres (268.1 sq. feet)



Call Paddock Wood - 01892 836877 ■ wardsofkent.co.uk

■ Through a Homewise Home For Life Plan people aged 60+ can secure this property for up to 59% less, by purchasing a Lifetime Lease



13627555/20260330/EN/ER