



CHARLES KNIGHT
ESTATE AGENTS



22 Limes Grove

, London, SE13 6DE

£1,850

Spacious Newly Refurbished Split-Level Two-Bedroom Flat | Prime Lewisham Location

A beautifully presented and newly refurbished split-level two-bedroom flat, offering generous living space across two floors — ideal for professionals, sharers or couples seeking flexible modern living in a highly convenient location.

The property features a bright and spacious open-plan reception area, finished to a high standard and flooded with natural light. The contemporary fully fitted kitchen offers ample storage and workspace, perfect for everyday living and entertaining.

Upstairs, you will find two well-proportioned double bedrooms, both offering excellent space and natural light, along with a sleek, modern bathroom. The split-level layout provides a clear separation between living and sleeping areas, enhancing privacy and practicality.

Situated in the heart of Lewisham, the property benefits from superb transport links and a wealth of local amenities. Lewisham Station is within easy walking distance, offering National Rail and DLR services with direct connections to London Bridge, Cannon Street and Canary Wharf — making it ideal for commuters.

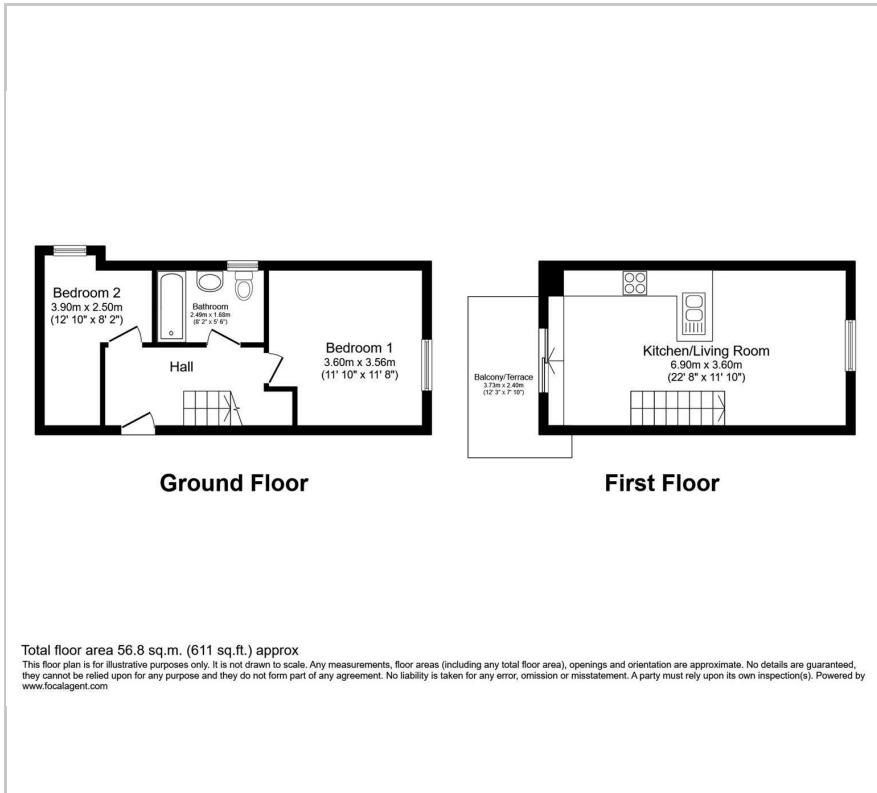
The flat is moments from Lewisham Shopping Centre, home to popular retailers including Marks & Spencer, H&M and Sainsbury's.

Viewing

Please contact our Lewisham Office on 02088 524441 if you wish to arrange a viewing appointment for this property or require further information.



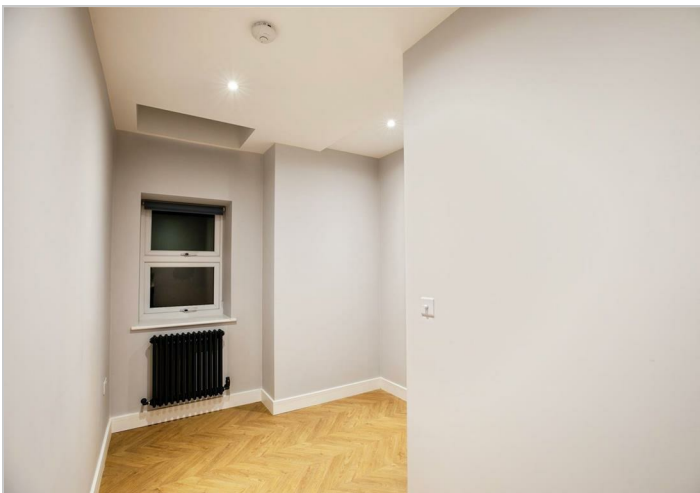
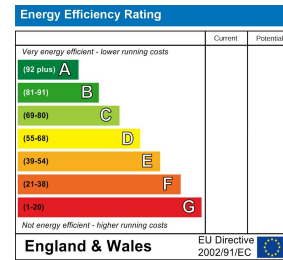
Floor Plan



Area Map



Energy Efficiency Graph



These particulars, whilst believed to be accurate are set out as a general outline only for guidance and do not constitute any part of an offer or contract. Intending purchasers should not rely on them as statements of representation of fact, but must satisfy themselves by inspection or otherwise as to their accuracy. No person in this firm's employment has the authority to make or give any representation or warranty in respect of the property.