



Basire Street, N1

£425,000

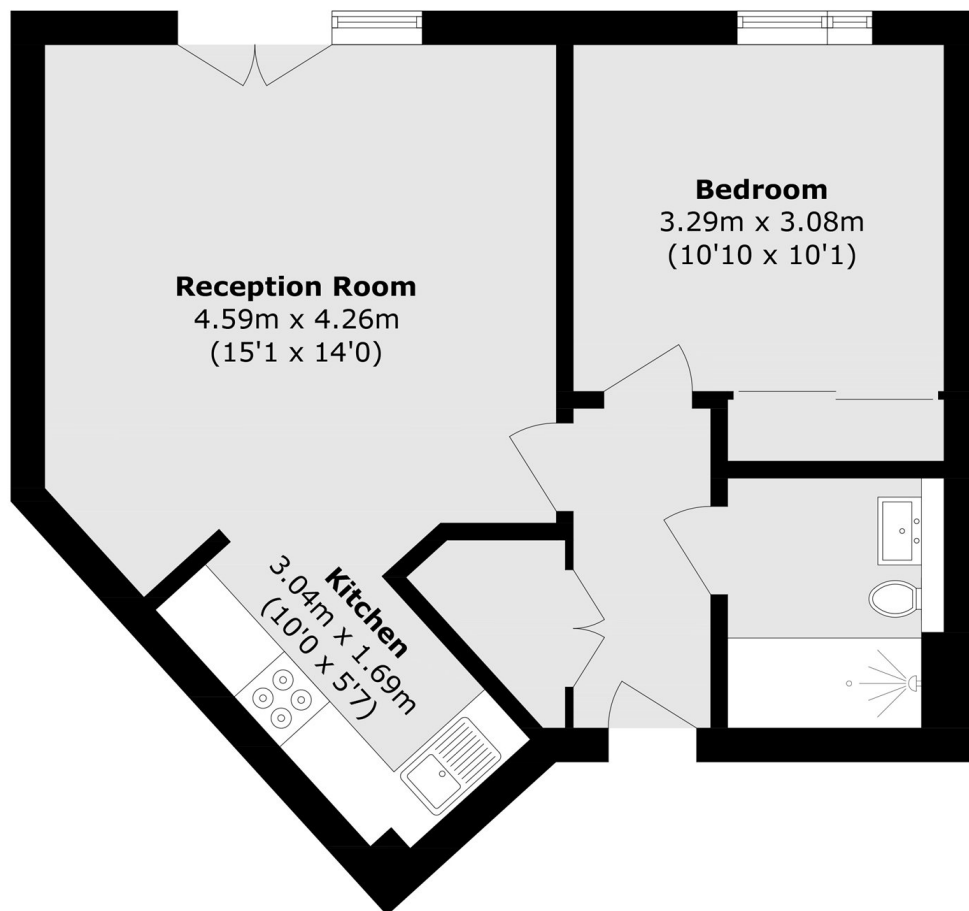
Sold chain free, an immaculately presented one bedroom apartment available on the ground floor of this small modern development. Recently refurbished, this beautiful home has wood flooring throughout, a semi open plan kitchen / living room and access to bike storage and a communal courtyard.

Island Apartments is located on Basire Street and is conveniently located for the varied amenities of Islington's Upper Street. The nearest Underground station can be found at Angel (Northern line). Also within easy reach is Essex Road station (First Capital Connect services) which provides easy access to the City via Moorgate. New North Road also provides excellent bus routes to the City and Old Street.

Features

- Chain Free
- One Bedroom
- Modern Development
- Semi Open-Plan
- Bike Storage
- Communal Courtyard

Basire Street, London, N1



Total area (approx.): 47.9 sq. m (515.5 sq. ft)