

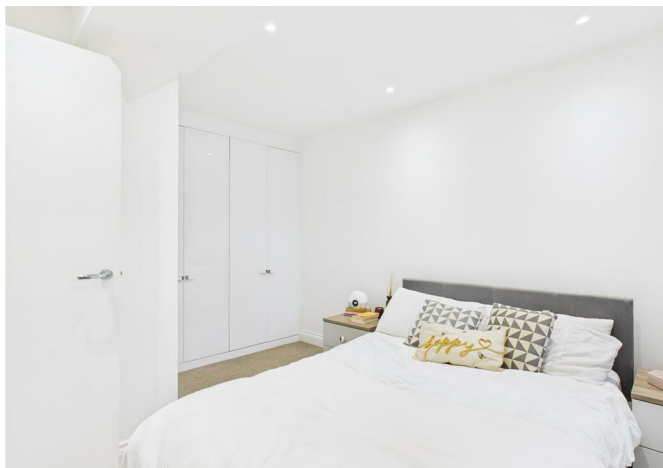


THE  
PROPERTY  
QUARTER



1 Chancery Place, Old Park Road, Hitchin, SG5 2ED  
**£195,000**





1 Chancery Place, Old Park Road, Hitchin, SG5 2ED

**£195,000**

We are extremely pleased to offer this delightful One Bedroom flat situated on the ground floor of a small block of apartments right in the very heart of Hitchin's town centre.

The modern interior boasts a modern bathroom and fully fitted kitchen with ample storage space, all presented in excellent decorative order.

There is also the added advantage of allocated parking and the property has a long lease too with relatively low outgoings.

Situated extremely close to all the various amenities , shops and cafes of Hitchin , this apartment would make an ideal first time purchase or Buy To Let investment.



## Features

- One Bedroom
- Ground Floor
- Modern Interior
- Fully Fitted Kitchen
- Town Centre Location
- Allocated & Visitor Parking
- Long Lease
- Ideal First Time Purchase or Buy to Let



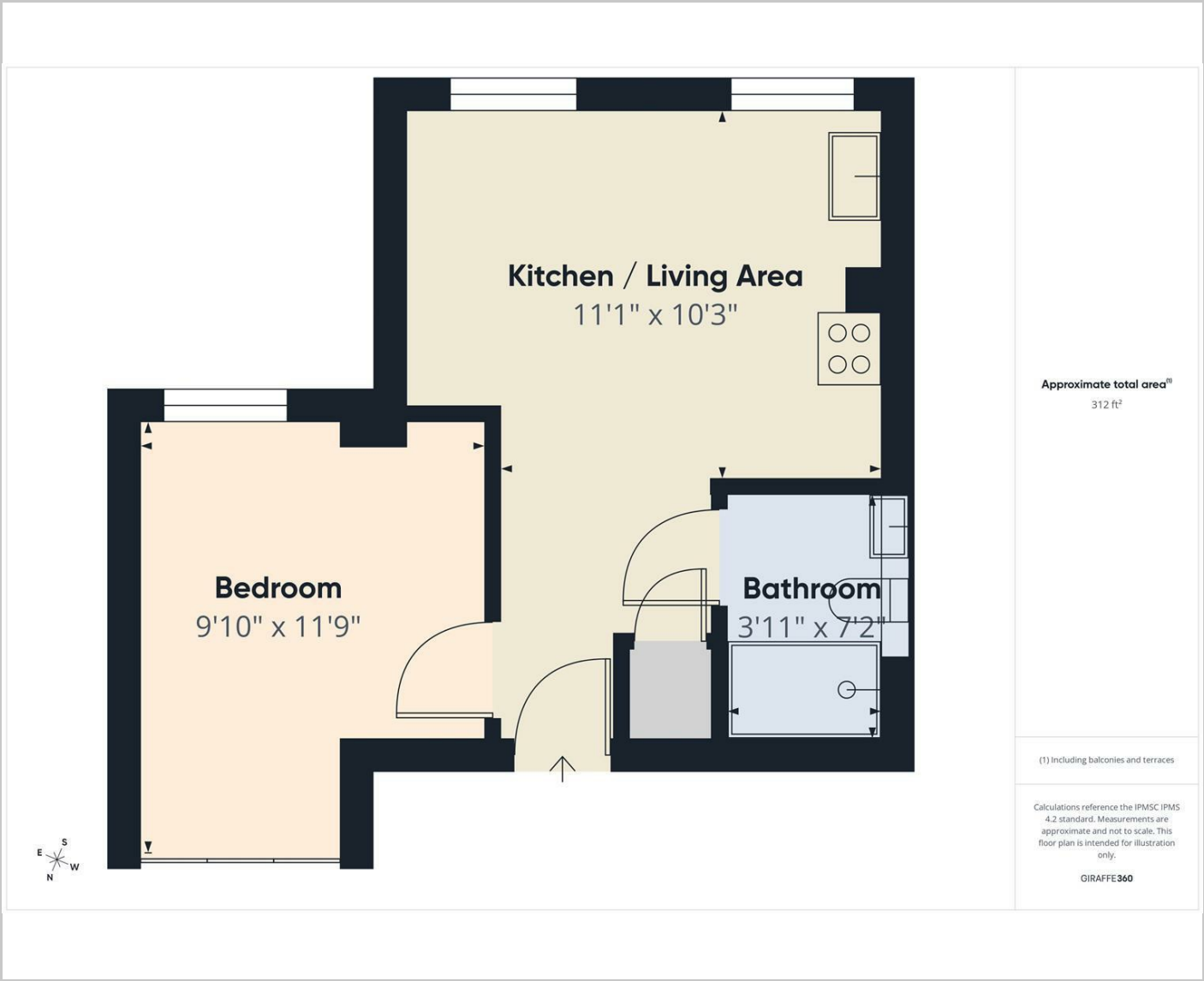
**Council Tax Band: A**

**Floor Area: sq ft**

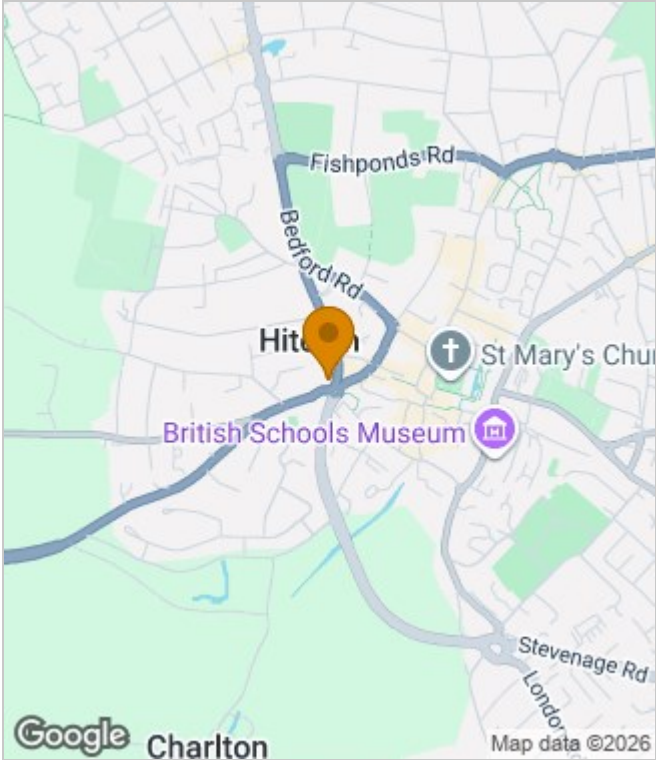
**EPC Rating:**

**Tenure: Leasehold**

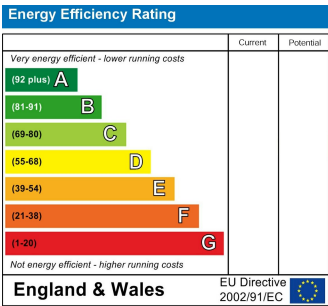
Floor Plans



Area Map



Energy Performance Graph



These particulars, whilst believed to be accurate are set out as a general outline only for guidance and do not constitute any part of an offer or contract. Intending purchasers should not rely on them as statements of representation of fact, but must satisfy themselves by inspection or otherwise as to their accuracy. No person in this firms employment has the authority to make or give any representation or warranty in respect of the property.