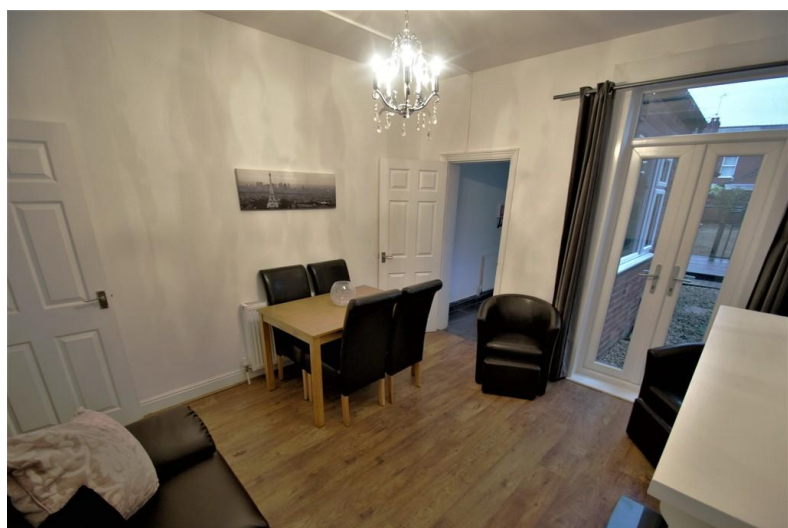




**Broomfield Road
Coventry
CV5 6JY**

- No Upward Chain
- Traditional & Modern Features
- Furniture Included
- Rented At £1295.00PCM

Offers In Excess Of £210,000
EPC Rating '56'





Property Description

This traditional three bedroom two reception property combines traditional and modern features. The property is currently rented on a periodic basis achieving £1,295.00 per month. This is sold with no upward chain.

The accommodation is arranged over three floors and briefly consist of; front reception room currently in use as a bedroom, rear reception room used as a lounge, a large kitchen/diner and large rear garden to the ground floor. To the first floor are two double bedrooms, a fully fitted four piece suite and on the second floor is a large double bedroom.

The property is offered to the market with no onward chain, viewing is highly recommended.



