



 Stuart  
Rushton  
& COMPANY

16 Woodfin Croft, Chelford – SK11 9SN  
£248,000



## 16 Woodfin Croft

Chelford

A well-proportioned two-bedroom mews in a Chelford cul-de-sac. Spacious lounge, dining kitchen, sunny garden, scope to modernise. No chain. Walk to village amenities and train. Parking and Garage.

Council Tax band: C

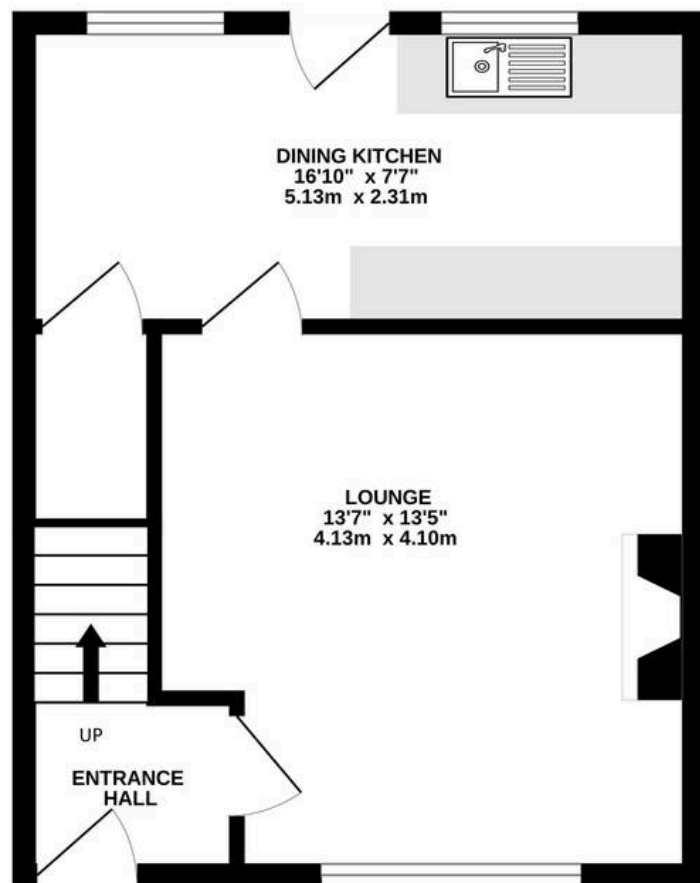
Tenure: Freehold

EPC Energy Efficiency Rating: C

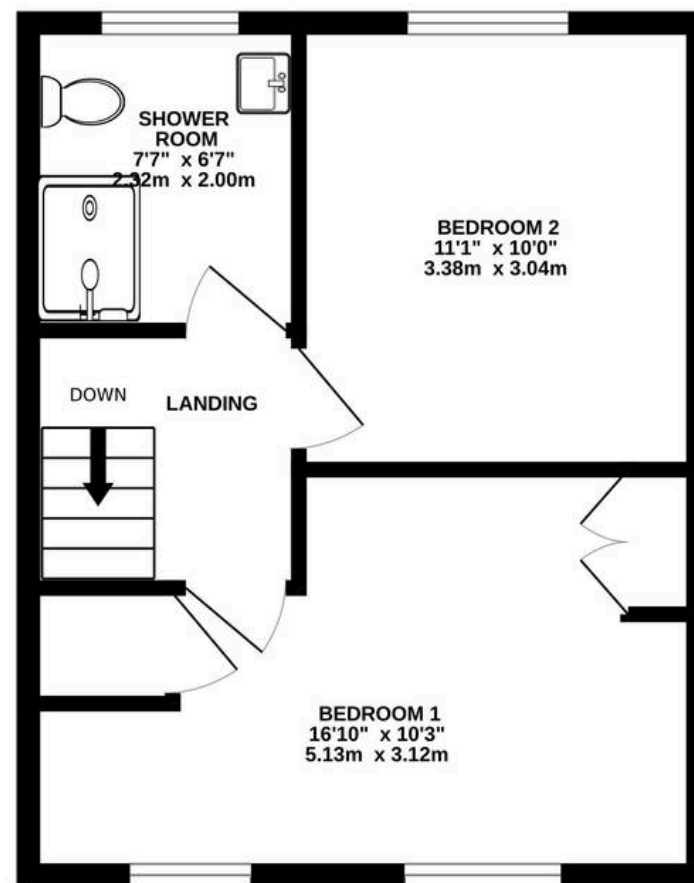
- A well-proportioned mews home sitting within a quiet cul-de-sac development in Chelford Village
- Good sized southerly facing rear garden
- Two good bedrooms and an updated shower room
- Scope for further modernisation or extension (STPP)
- No onward chain
- Ideal first home or downsize, just minutes walk from the amenities of Chelford village and the train station
- Driveway parking for one car and separate single garage



GROUND FLOOR  
350 sq.ft. (32.5 sq.m.) approx.



1ST FLOOR  
356 sq.ft. (33.1 sq.m.) approx.



TOTAL FLOOR AREA : 706 sq.ft. (65.6 sq.m.) approx.

Whilst every attempt has been made to ensure the accuracy of the floorplan contained here, measurements of doors, windows, rooms and any other items are approximate and no responsibility is taken for any error, omission or mis-statement. This plan is for illustrative purposes only and should be used as such by any prospective purchaser. The services, systems and appliances shown have not been tested and no guarantee as to their operability or efficiency can be given.

Made with Metropix ©2026



## Stuart Rushton & Company

Stuart Rushton & Co, 35 King Street – WA16 6DW

01565 757000

[enquiries@srushton.co.uk](mailto:enquiries@srushton.co.uk)

[www.srushton.co.uk](http://www.srushton.co.uk)



We are not authorised to make or give any representations or warranties in relation to the property either here or elsewhere. We assume no responsibility for any statement that may be made in these particulars, and they do not form part of any offer or contract and must not be relied upon as statements or representation of fact. Any areas, measurements or distances are approximate. The text, photographs and plans are for guidance only. Importantly, it should not be assumed that the property has all necessary planning, building regulations or other consents and we have not tested any services, equipment or facilities. Purchasers must satisfy themselves by inspection or otherwise.