

SNELLERS

ESTATE AGENTS



The Cedars, TW11

£800,000

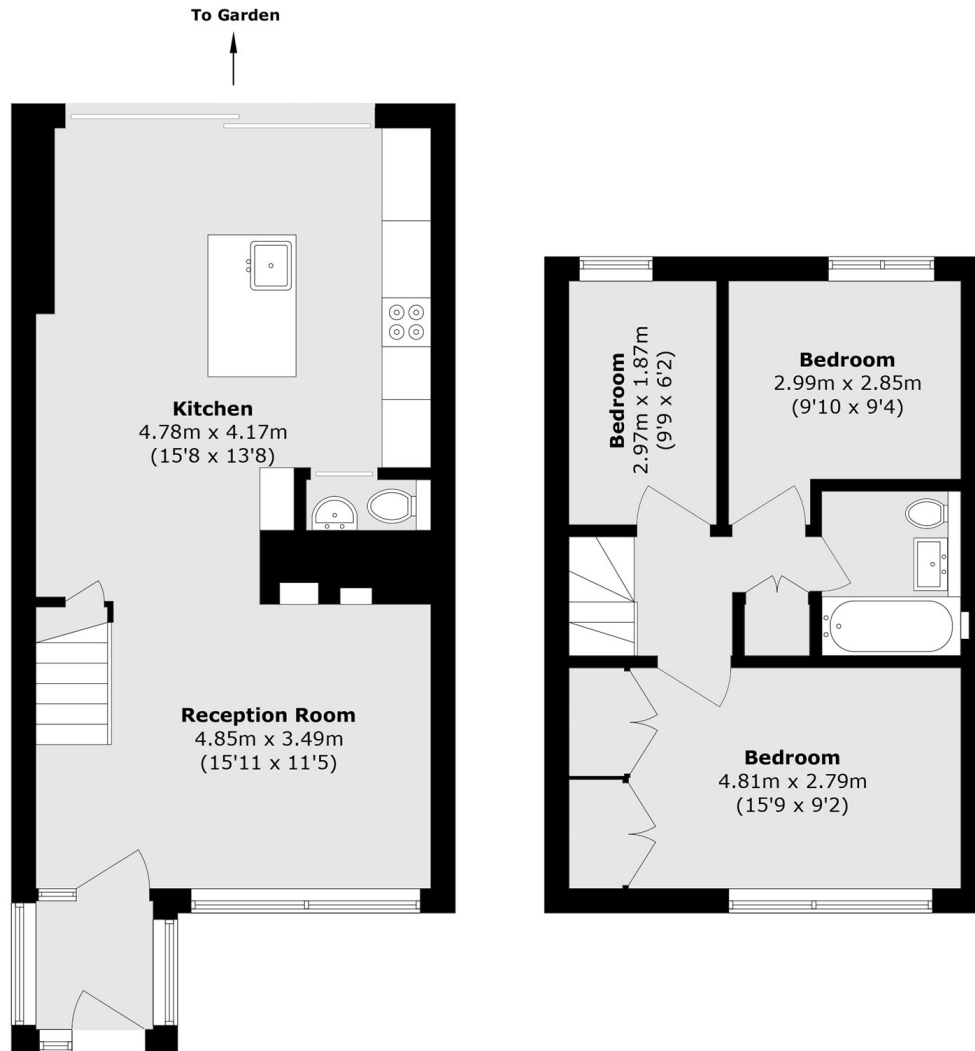
Offers Over £800,000. This beautiful three bedroom Span house, built in 1958 by the award winning architect Eric Lyons, is arranged over two floors, has a stylish open plan kitchen and also benefits from having residents parking, a south facing garden and solar panels.

Adelaide Road is a highly sought after spot which leads to Teddington mainline station that offers a direct link to London Waterloo. Teddington high street with it's vast array of shops, restaurants and pubs is only a few hundred yards away, as is entrance to the royal Bushy Park.

- Eco Home • No Onward Chain • Residents Parking •
- Central Location • Rear Access • Downstairs W.C •

SNELLERS

ESTATE AGENTS



Ground Floor

First Floor

Total area (approx.): 83.6 sq. m (899.8 sq. ft)

Snellers Teddington Sales
74 Broad Street
Teddington
TW11 8QX
020 8408 8040
teddingtonsales@snellers.co.uk

Energy Rating: We aim to make our particulars both accurate and reliable. However they are not guaranteed; nor do they form part of an offer or contract. If you require clarification on any points then please contact us, especially if you're traveling some distance to view. Please note that appliances and heating systems have not been tested and therefore no warranties can be given as to their good working order