



Barton Drive, Kedington, CB9 7PS

CHEFFINS

## Barton Drive

Kedington,  
CB9 7PS

A very well presented and rarely available two bedroom semi detached bungalow in the village of Kedington close to schools and amenities. The property benefits from rear garden, driveway, and single garage. Available 17th July 2026.

- Two Bedrooms
- Kitchen Dining Room
- Sitting Room
- Bathroom
- EPC Rating C
- Council Tax Band B



£1,100 PCM





### Entrance Hall

Storage cupboard, doors to:

### Sitting Room

Window to rear, feature fireplace

### Kitchen Dining Room

Fitted with wall and base units with worktop over, sink with mixer tap and drainer, cooker, space and plumbing for appliances, window to rear, door to garden

### Bedroom One

Window to front

### Bedroom Two

Window to front

### Bathroom

Fitted with panelled bath with shower and screen over, wc, wash hand basin, window to side

### Garden

Mainly laid to lawn with mature shrubs, gated side access and pedestrian door to garage

### Driveway and Garage

Driveway to side of the property and single garage with up and over door

### Holding Deposit

£253.00

### Material Information

For more information on this property please refer to the Material Information brochure on our Website

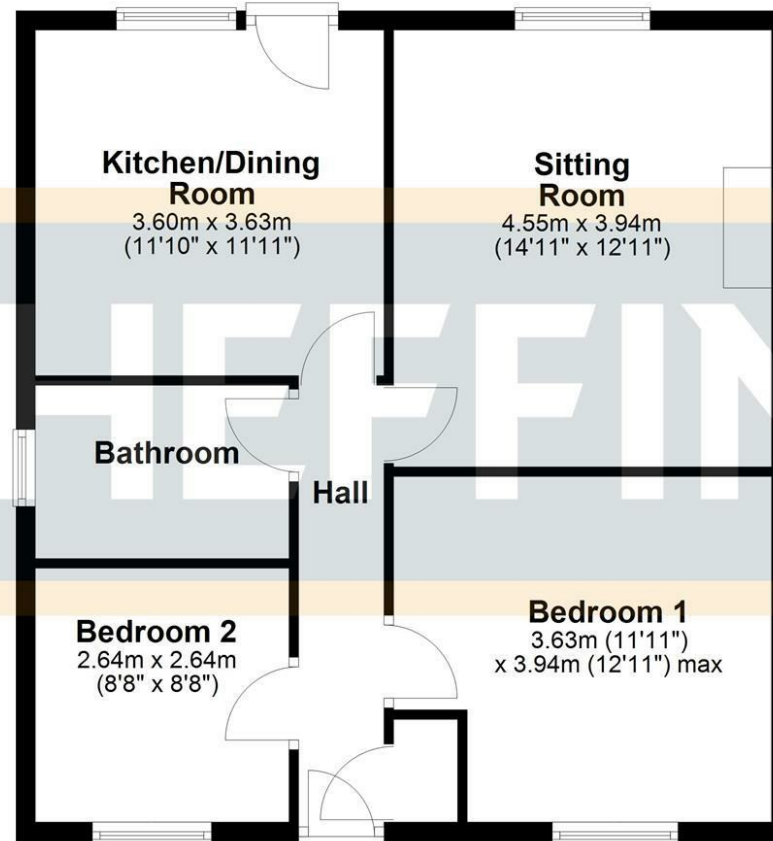


### Energy Efficiency Rating

	Current	Potential
Very energy efficient - lower running costs		
(92 plus) <b>A</b>		
(81-91) <b>B</b>		<b>85</b>
(69-80) <b>C</b>	<b>69</b>	
(55-68) <b>D</b>		
(39-54) <b>E</b>		
(21-38) <b>F</b>		
(1-20) <b>G</b>		
Not energy efficient - higher running costs		
<b>England &amp; Wales</b>	EU Directive 2002/91/EC	

## Ground Floor

Approx. 63.3 sq. metres (681.2 sq. feet)



Total area: approx. 63.3 sq. metres (681.2 sq. feet)

### Agents note:

For more information on this property please refer to the Material Information Brochure on our website.

Cavendish House, 27a High Street, Haverhill, Suffolk, CB9 8AD | 01440 707076 | cheffins.co.uk



IMPORTANT: we would like to inform prospective purchasers that these sales particulars have been prepared as a general guide only. A detailed survey has not been carried out, nor the services, appliances and fittings tested. Room sizes should not be relied upon for furnishing purposes and are approximate. If floor plans are included, they are for guidance only and illustration purposes only and may not be to scale. If there are any important matters likely to affect your decision to buy, please contact us before viewing the property.