



Yew Grove, NW2

£600,000

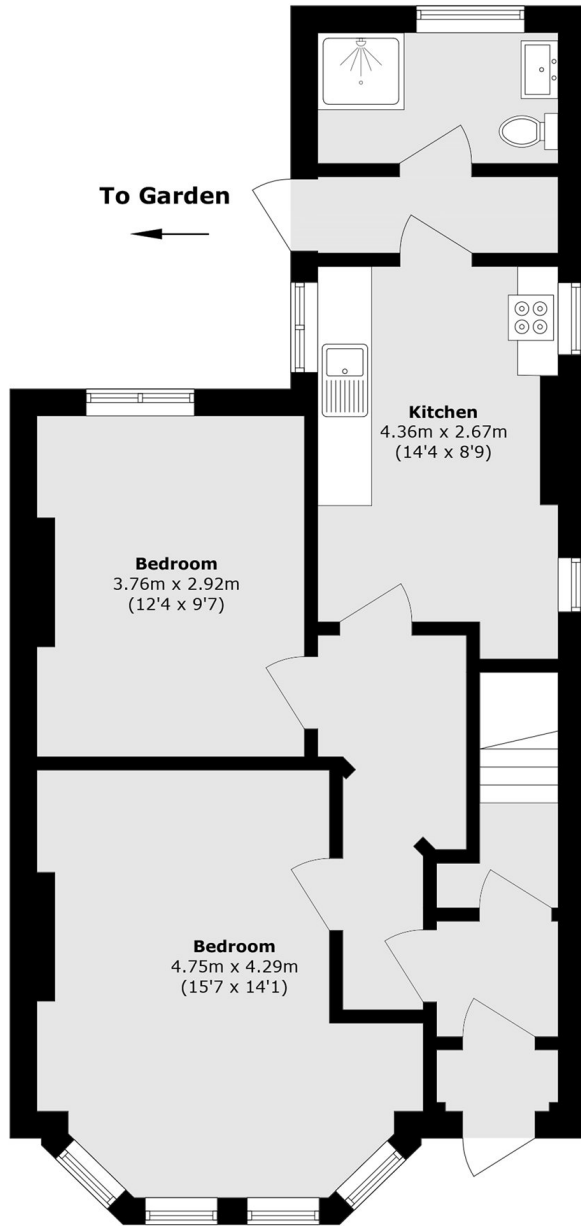
A perfect investment opportunity to purchase this freehold house which has already been split into two flats. The property has a one bedroom flat on the ground floor with direct access to a private garden and a two bedroom flat on the first floor. Added benefit of a chain free sale.

Yew Grove is conveniently located for quick access into Central London via Cricklewood station (Thameslink) and Kilburn underground station (Jubilee line). Local amenities in abundance with Cricklewood Broadway, Kilburn and West Hampstead within one mile.

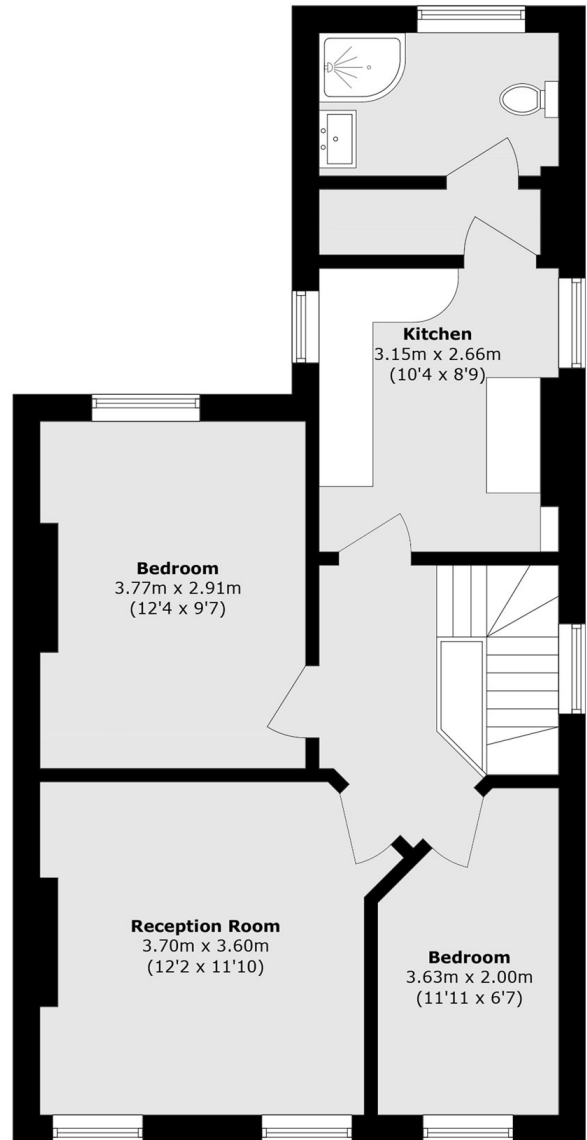
Features

- Investment Opportunity
- Freehold House
- Split Into Two Flats
- One Title
- Two Separate Council Taxes
- Chain Free

Yew Grove, London, NW2



Ground Floor



First Floor

Total area (approx.): 114.9 sq. m (1236.7 sq. ft)