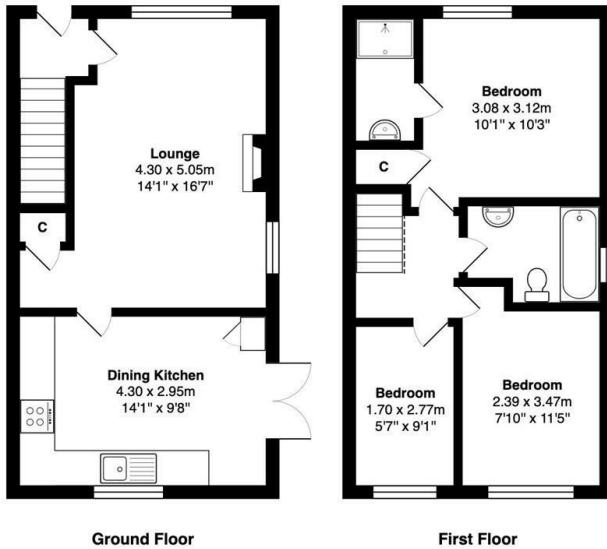




## 20 Kendal Close, Hellifield, Skipton, BD23 4HG

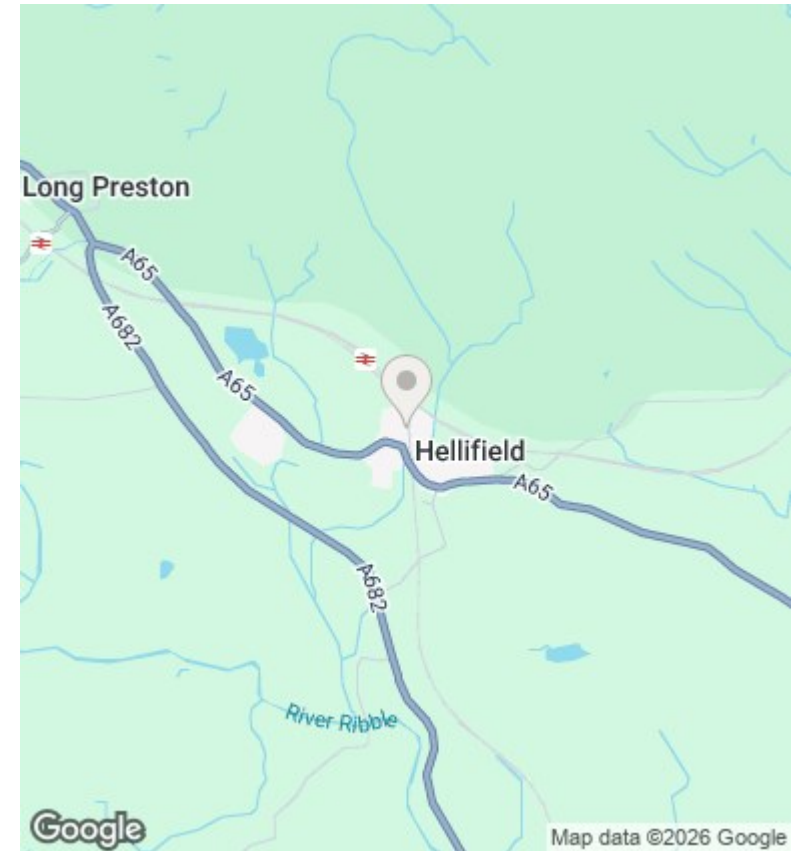
Asking Price £255,000

- THREE BED SEMI DETACHED
- CUL DE SAC SETTING
- CENTRAL HEATING
- VIEWING A MUST
- GENEROUS GARDENS
- DINING KITCHEN
- DOUBLE GLAZING
- OFF ROAD PARKING
- ENSUITE
- CLOSE TO AMENITIES



Total Area: 69.8 m<sup>2</sup> ... 752 ft<sup>2</sup>

All measurements are approximate and for display purposes only



## Directions

## Viewings

Viewings by arrangement only. Call 01756 753341 to make an appointment.

## Council Tax Band

C

## EPC Rating:

C

Energy Efficiency Rating		Current	Potential
<i>Very energy efficient - lower running costs</i>			
(92 plus)	A		
(81-91)	B		83
(69-80)	C	72	
(55-68)	D		
(39-54)	E		
(21-38)	F		
(1-20)	G		
<i>Not energy efficient - higher running costs</i>			
<b>England &amp; Wales</b>		EU Directive 2002/91/EC	