

FOR SALE

1 Redricks Cottage, Redricks Lane, Sawbridgeworth, CM21 0RL

- Semi Detached Character Property
- Large Garden
- Off Road Parking
- 1.18 km north west of Harlow Town Railway Station
- Offered with no onward chain.



DESCRIPTION

1 Redricks Cottage is a two-bedroom semi-detached cottage. The ground floor accommodation comprises a kitchen, study, reception room, utility area, and a bathroom, providing a practical and flexible living environment. On the first floor there are two reasonably sized bedrooms.

Externally, the property sits within a generous plot, benefiting from a substantial rear garden and off-road parking. The cottage has also been enhanced by a rear extension

There is also the opportunity to acquire the neighbouring cottage, presenting potential for amalgamation into a larger detached dwelling, subject to the necessary consents, or alternatively as a wider investment purchase.

LOCATION

Redricks Cottage is located on Redricks Lane. The property is located approximately 1.18 km from Harlow Town Railway Station, which provides direct services to London Liverpool Street in under 40 minutes, making it well suited for commuters.

The property also benefits from convenient access to the nearby towns of Harlow and Bishop's Stortford, both offering a range of amenities, retail facilities, and services. Additionally, the M11 motorway is within easy reach.

SERVICES

The property benefits from a mains electricity supply. The water supply is shared with the adjoining property, 2 Redricks Cottage. Drainage is provided via a shared septic tank.

EPC

The property has an EPC rating of a E.

COUNCIL TAX

The property is a Band C rated.

VIEWING

Viewing is available by prior appointment with the agents.

Contact: Nuria Surani or Abigail Harris

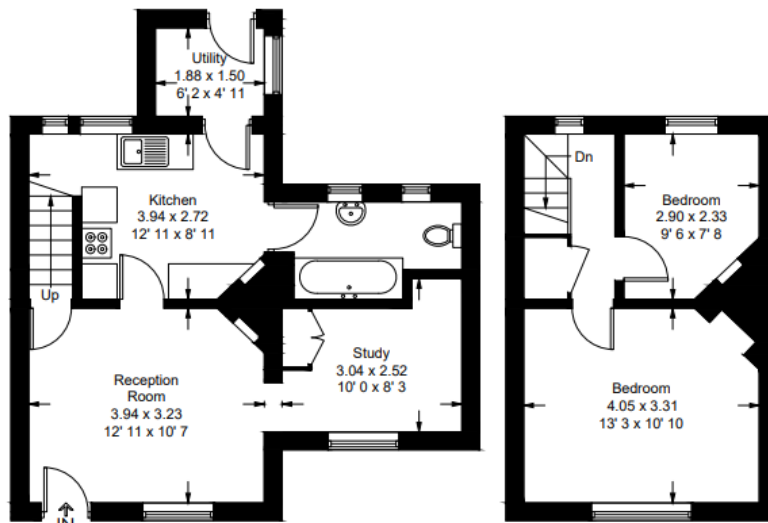
T: 01279 771188

DATE:

May 2026

Redricks Cottages

Approximate Gross Internal Area = 717 sq ft / 66.6 sq m



Ground Floor
448 sq ft / 41.6 sq m

First Floor
269 sq ft / 25 sq m

This plan is not to scale and must be used as layout guidance only. All measurements and areas are approximate and should not be relied upon to provide accurate information. This plan must not be relied upon when making property valuations, design considerations or any other such relevant decisions. We accept no responsibility or liability (whether in contract, tort or otherwise) in relation to any loss whatsoever arising from or in connection with any use of this plan or the adequacy, accuracy or completeness of it or any information within it.



IMPORTANT NOTICE:

Sworders for itself and the Landlords give notice that the particulars are a general outline only for the guidance of intending tenants and do not constitute an offer or contract. All descriptions and any other details are given without responsibility and any intending tenants should not rely on them as statements or representation of fact but must satisfy themselves by inspection or otherwise as to their correctness. No employee of Sworders has any authority to make or give any representation or warranty whatever in relation to this property. No responsibility can be accepted for the expenses incurred by any inspecting properties that have been sold, let or withdrawn.

NB: All measurements are approximate and for guidance only. The plan showing the property is based upon the Ordnance Survey Map with the sanction of the Controller of H M Stationery Office Crown Copyright Reserved and is showed for identification purposes only and should not be scaled. Particulars prepared May 2026.