





NEXA Properties are delighted to present this two-bedroom extended home in the sought-after location of Yardley Close, Anchorage Park. The property offers a spacious reception room and a large extended kitchen on the ground floor, with two bedrooms and a family bathroom upstairs. A private rear garden with pedestrian access and a separate garage with power and lighting.

- EXTENDED FAMILY HOME
- STUNNING LARGE KITCHEN
- LANDSCAPED GARDEN
- FULLY RENOVATED
- GARAGE AND PARKING
- CUL-DE-SAC LOCATION

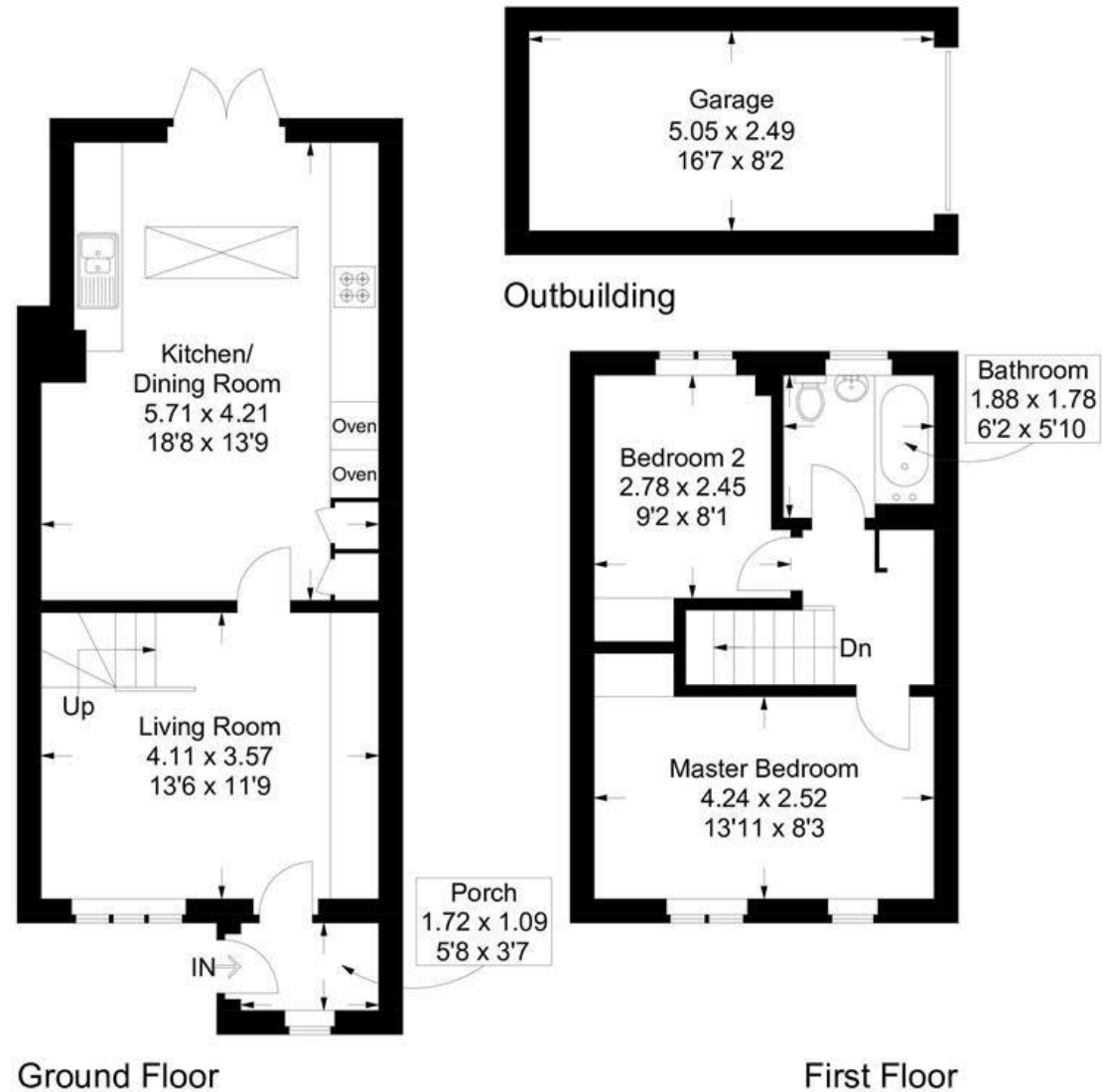


# Yardley Close, Copnor

Approximate Gross Internal Area = 69.3 sq m / 746 sq ft

Outbuilding = 12.9 sq m / 139 sq ft

Total = 82.2 sq m / 885 sq ft



This plan is for layout guidance only. Not drawn to scale unless stated. Windows and door openings are approximate. Whilst every care is taken in the preparation of this plan, please check all dimensions, shapes and compass bearings before making any decisions reliant upon them.