



Woodfield House Tangmere Road

Oving, Chichester, PO20 2PB

£1,375

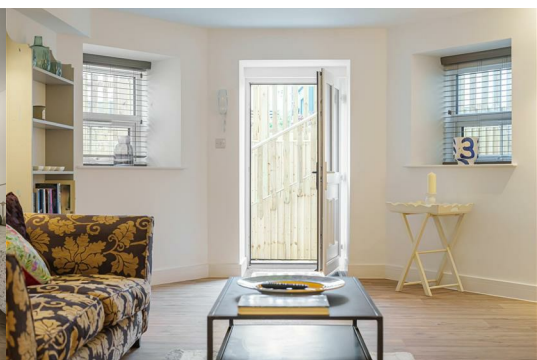


Signature Properties South is delighted to present this semi-rural yet modern development of well-appointed one and two bedroom apartments, offering contemporary living with character.

Each apartment benefits from a fully fitted kitchen with ample storage, built-in oven and extractor hob, and integrated appliances including a dishwasher and fridge/freezer. A separate utility room houses a washing machine and tumble dryer.

The naturally light double bedrooms provide a comfortable and relaxing space. The bathroom is finished to a modern standard and comprises a low-level WC, wash hand basin with vanity surround, a bath with glazed folding screen and shower overhead, as well as a separate walk-in shower.

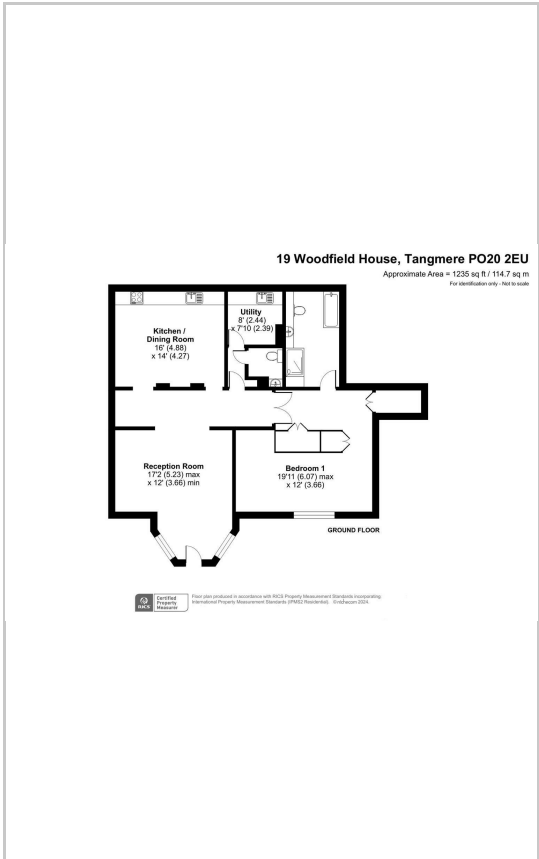
Externally, residents have access to off-road parking, and secure bicycle storage.



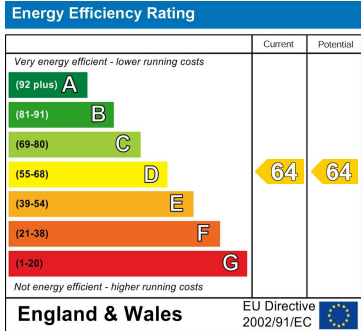
Area Map



Floor Plans



Energy Efficiency Graph



These particulars, whilst believed to be accurate are set out as a general outline only for guidance and do not constitute any part of an offer or contract. Intending purchasers should not rely on them as statements of representation of fact, but must satisfy themselves by inspection or otherwise as to their accuracy. No person in this firms employment has the authority to make or give any representation or warranty in respect of the property.