

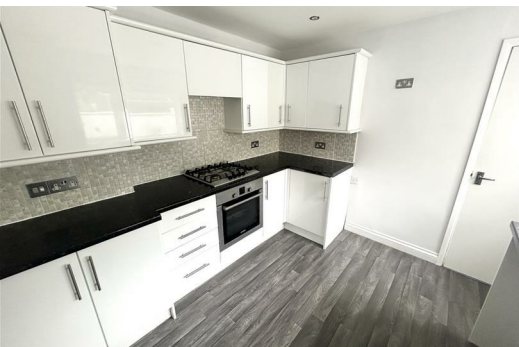


27 Caradoc Street, Cwmcarn, Newport, NP11 7EF
£875 PCM

SAGE AND CO are pleased to offer TO LET spacious well presented THREE BEDROOM bay fronted mid terraced property situated in Cwmcarn. The property is close to local amenities, schools and transport links. Briefly comprises lounge, dining room, fitted kitchen, spacious family bathroom and enclosed rear garden. One of the bedrooms also benefits from a W/C. Gas central heating and double glazed throughout.

AVAILABLE NOW
VIEWING HIGHLY RECOMMENDED

Applicants will require an annual income of over £30,000
Holding deposit £201.14
Bond £875.00



Lakeside House, Llantarnam Parkway, Cwmbran, NP44 3GA
Telephone: 01633 838 888 **Email:** cwmbran@sageandco.co.uk

