



Selbon

Residential sales & lettings

Hayne Avenue, Fleet,
Hampshire, GU51 3TN
Offers over £650,000 Freehold



01252 979300
Selbonproperty.co.uk

- Semi-Detached Family Home
- Kitchen/Dining Room & Living Room
- Bedroom 2 With Dressing Room & En-Suite
- Driveway Parking
- Hartland Village Development
- Four Bedrooms
- Bedroom 1 With Dressing Room & En-Suite
- Two Further Bedrooms & Family Bathroom
- Enclosed Rear Garden
- No Onward Chain

Selbon Estate Agents are delighted to offer to the market this beautifully presented four-bedroom family home, situated within the highly sought-after Hartland Village development, providing modern living across three floors. The property is offered for sale with no onward chain.

Ideally positioned for convenient access to the M3 motorway, Fleet town centre and a range of transport links, this property is perfectly suited to growing families and commuters alike.

The ground floor offers a welcoming entrance hall leading to the living room with an attractive bay window. To the rear of the property is a generous 17'2" kitchen/dining room, providing the ideal hub for family life and entertaining, with doors opening onto the rear garden.

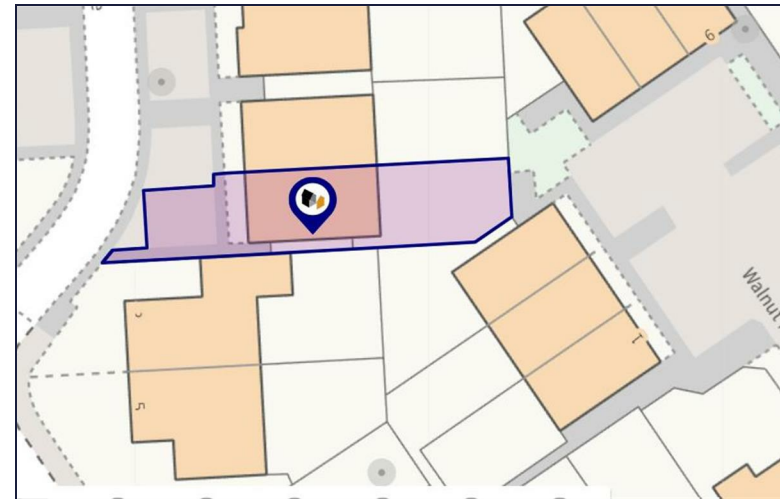
Fitted with eye and base level cupboard and drawer units with range of built-in appliances including; double oven, hob with extractor over, dishwasher, fridge and freezer. A convenient utility cupboard and cloakroom completes the ground floor accommodation.

The first floor comprises three well-proportioned bedrooms. The impressive second bedroom benefits from its own walk-in wardrobe and en-suite shower room, while bedrooms three and four are served by a contemporary family bathroom.

Occupying the entire second floor is the superb principal bedroom suite, offering excellent privacy and space. The room features a dedicated dressing/wardrobe area together with a en-suite shower room.

Externally, the property enjoys an enclosed rear garden, ideal for outdoor entertaining and family enjoyment. To the front is driveway parking.

Hartland Village is a growing community within Fleet, Hampshire located in an ideal location for M3 access and access into both Fleet and Farnborough Town Centres. The nearby Hartland's Country Park offers the use of approximately 70 acres of woodland, meadows and ponds with footpaths, for residents to enjoy. Hartland Village also hosts events for residents to socialise and enjoy, including an open air cinema.









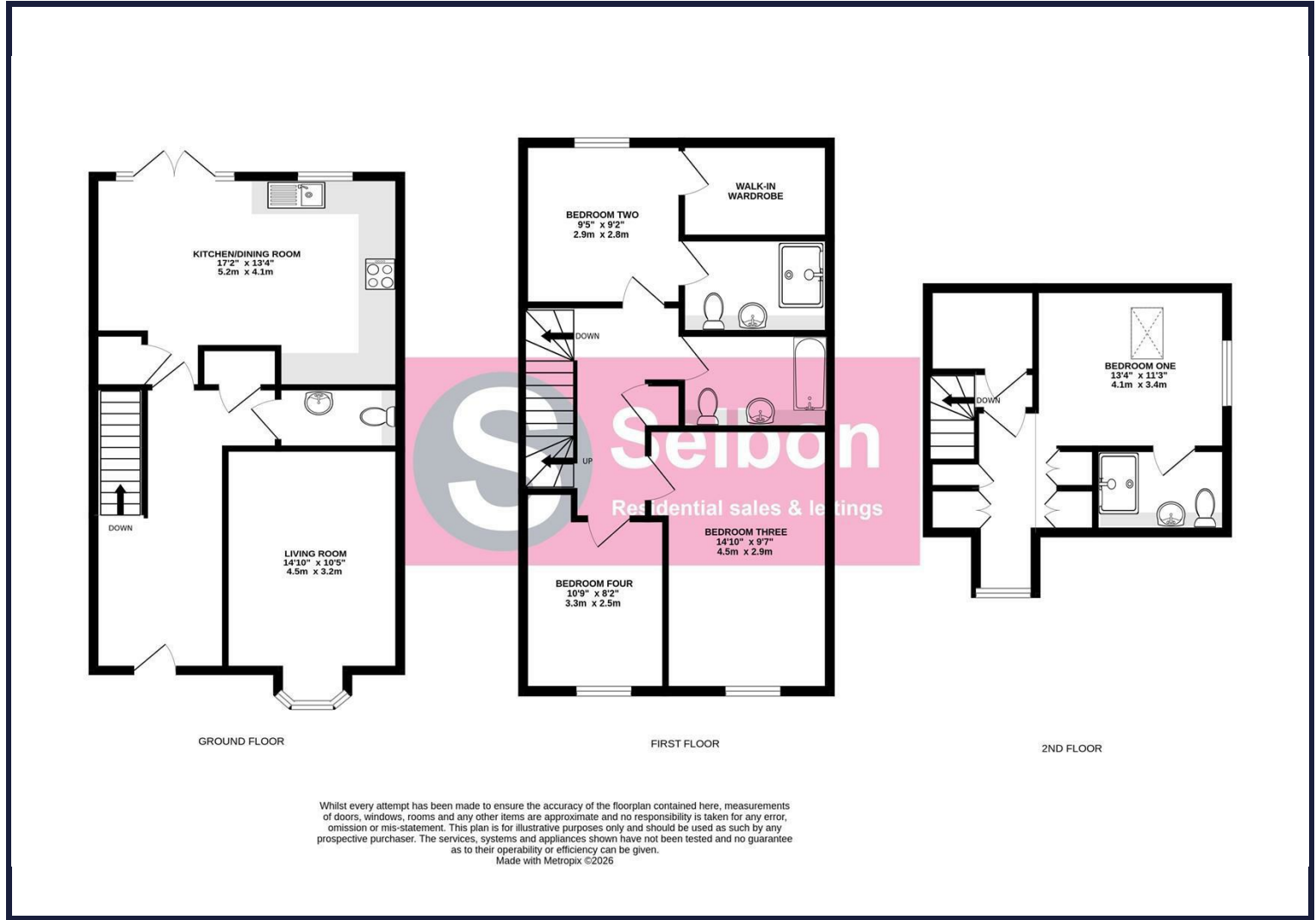




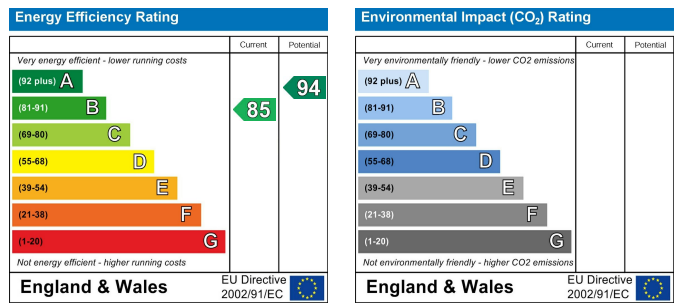


Floor Plans

Area Map



Energy Performance Graph



Viewing

Council Tax Band: E

For further information on this property or to arrange a viewing please contact Selbon Estate Agents on 01252 979300

We give notice that these particulars are produced in good faith and in accordance with the Digital Markets, Competition and Consumers Act 2024 (DMCC Act). They are set out as a general guide only and do not constitute any part of a contract or warranty whatsoever. Intending purchasers should not rely on them as statements of representation of fact, but must satisfy themselves by inspection or otherwise as to their accuracy. No person in the employment of Selbon has any authority to make or give any representation or warranty whatever in relation to the property. A detailed survey has not been carried out nor have the services, heating systems, appliances or specific fittings been tested. Any photograph incorporated within these particulars shows only certain parts of the property and it must not be assumed that any contents or fixtures and fittings shown in the photographs are either included with the property or indeed remain in it. Room sizes shown and any floor plans should not be relied upon for carpets and furnishings. If there is any point which is of particular importance to you we will be pleased to check the information for you and confirm that the property remains available. This is particularly important if you are contemplating travelling some distance to view the property.