

UPPER ADDISON GARDENS, W14



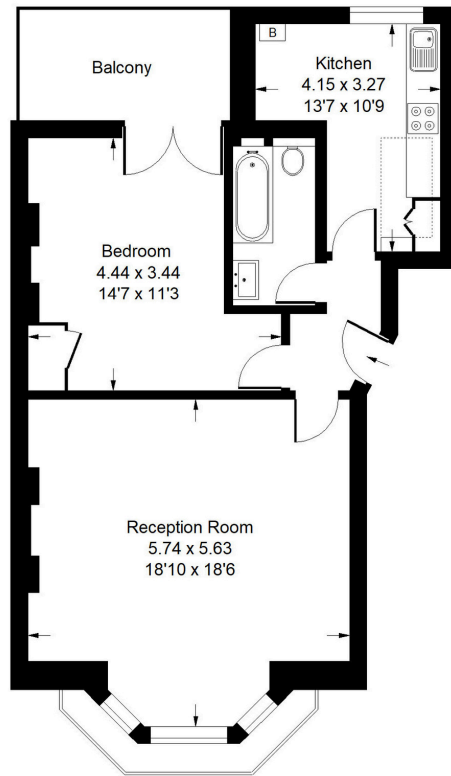
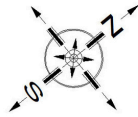


Upper Addison Gardens, W14

Set on a beautiful cherry tree-lined street in the heart of Holland Park, this elegant raised ground floor apartment has been recently refurbished to an exceptional standard. The spacious one-bedroom flat combines impressive period charm with contemporary finishes, featuring high ceilings, original character details, and a private west-facing terrace. The property comprises of a stunning reception room ideal for entertaining, a separate fully fitted kitchen, a spacious double bedroom with direct access to the terrace and a stylish bathroom. Upper Addison Gardens is one of Holland Parks most desirable residential streets, perfectly positioned moments from the excellent amenities, restaurants, and transport links of Holland Park Avenue and Kensington High Street. Westfield London is also within easy reach.



Approx. Gross Internal Area
= 66.1 sq m / 711 sq ft



Raised Ground Floor



Upper Addison Gardens, W14 - Leasehold

Local Authority - Royal Borough of Kensington & Chelsea

- High Ceilings
- Private Terrace
- Close to Holland Park
- EPC Rating = D
- Council Tax Band = E



Whilst every attempt has been made to ensure the accuracy of the floor plan, measurements are approximate and not to scale. No guarantee is given on the total square footage of the property quoted on the plan. Figures given are for guidance. Plan is for illustration purposes only, not to be used for valuations.