



Toby Gullick
INDEPENDENT PROPERTY SPECIALIST

West Tytherley, SP5
Guide Price £360,000

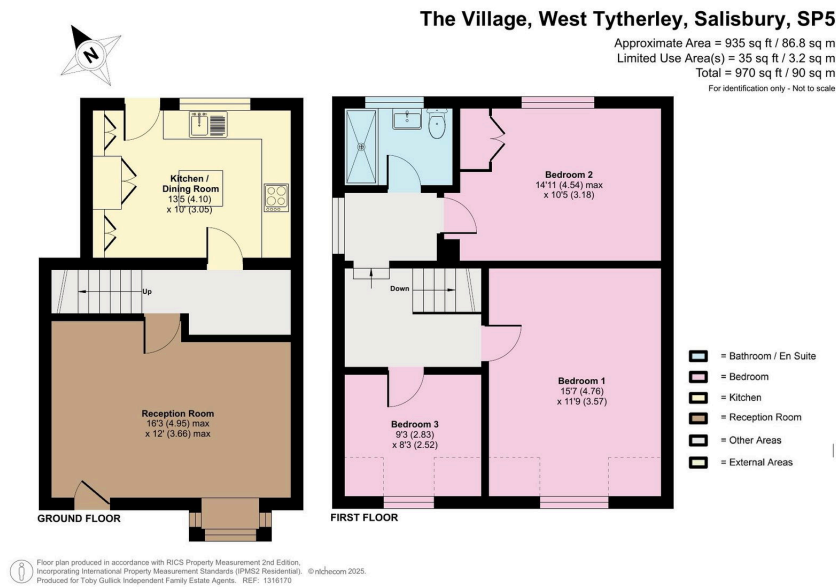
3 1 1



A PICTURE PERFECT VICTORIAN COTTAGE IN THE HEART OF WEST TYTHERLEY

Situated in the sought-after village of West Tytherley, this stunning three-bedroom terraced Victorian cottage exudes character, charm, and timeless appeal. Set behind a pretty front garden, the home instantly captivates with its classic brick façade and beautiful cottage-style detailing. Step inside to a welcoming sitting room, where exposed beams and a cosy open fire with a sumptuous stone surround creates an inviting atmosphere, the perfect retreat to unwind, cosy up and escape the world. The traditional and stylish kitchen/dining room is full of character and warmth, provides a homely space for cooking and dining, retaining the essence of a true country cottage. The kitchen blends classic charm with modern functionality, centred around a timeless Rayburn with a solid fuel burner. Shaker-style cabinetry in antique white, paired with black granite stone worktops and tiled flooring, creates a homely yet luxurious feel. A small central island serves as both a practical hub and a seating area. The kitchen offers ample floor to ceiling cupboard space, a classic butler sink beneath a window, smart LED lighting, and a door opening on to the garden add both character and contemporary flair. This is a kitchen designed for modern country living, functional, welcoming, and full of understated elegance. Upstairs, you'll find three well-proportioned, double bedrooms, each with their own unique style and a delightful family bathroom, thoughtfully finished to balance period charm with modern comfort. Each room enjoys lovely natural light, with bedroom three offering beautiful views over the village recreational grounds. The pretty courtyard garden is a true highlight, featuring a large patio area ideal for al fresco dining or morning coffee, and a private gate giving direct access onto the recreational grounds beyond. Whether you're watching a village cricket match or enjoying a peaceful stroll, this unique setting offers an idyllic lifestyle. Further benefits include a separate, allocated car port for convenient parking. **This enchanting home perfectly blends heritage, setting, and practicality, a rare opportunity in one of Hampshire's most desirable rural villages.**





- Stunning And Characterful Victorian Terraced Cottage
- Three Beautiful Double Bedrooms
- A Stylish Family Shower Room
- Traditional Country Kitchen With High End Finishes
- Exudes Period Features
- Beautiful Rural Outlook
- Pretty Courtyard Garden
- Separate Allocated Car Port
- Prime Village Location
- No Forward Chain

