



Melcombe Place, NW1

£699,950

A bright one bedroom apartment located on the seventh floor of a period building. Presented in excellent condition with far reaching views, Selling chain free with a long lease.

Located opposite London Marylebone Station and accessible on foot to Regents Park, Baker Street and Marylebone High Street.

Features

- Lease To 2172
- Seventh Floor With Views
- Modern Passenger Lift
- Remodelled Interior
- Excellent Condition
- Close To Transport

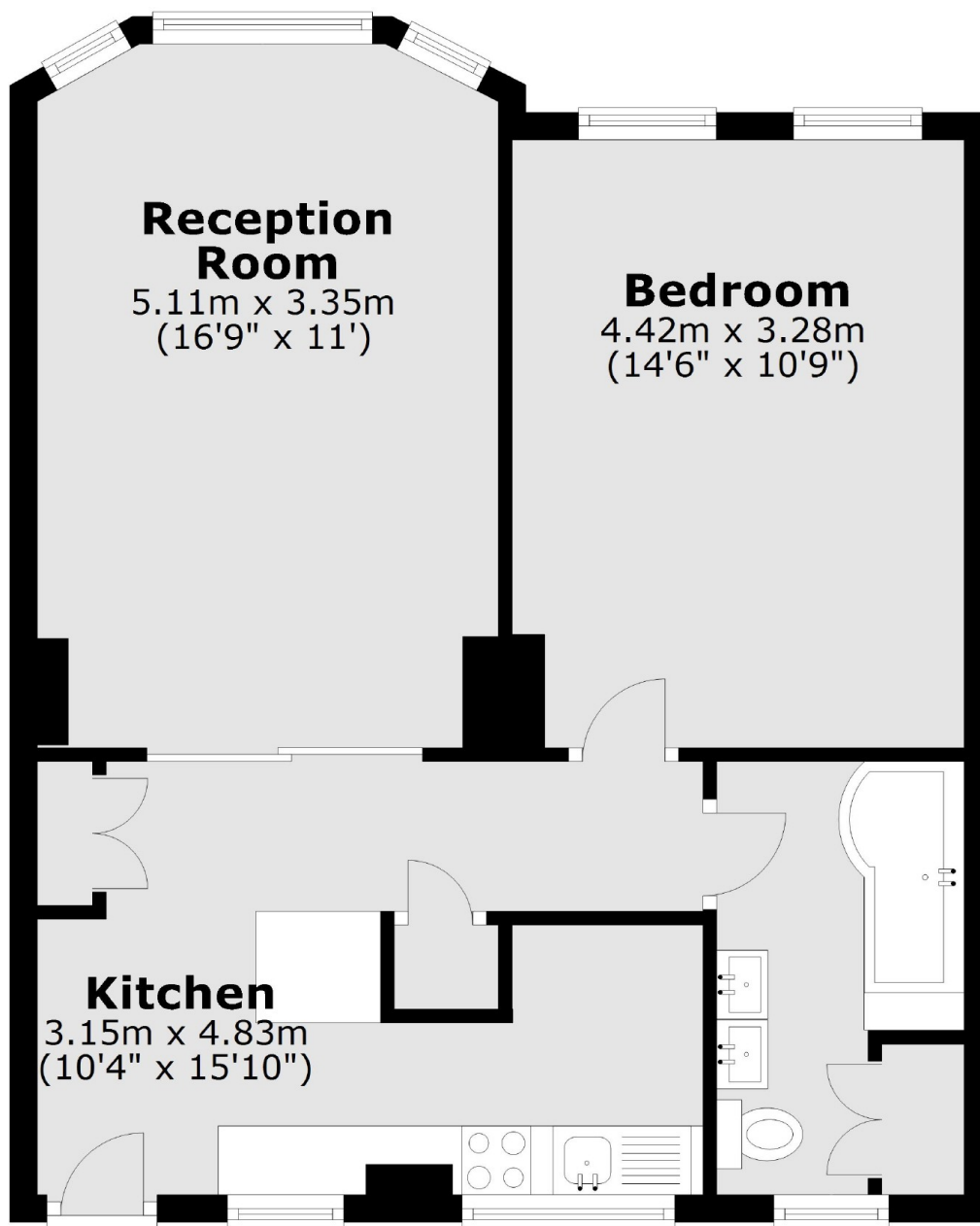


Melcombe Place, NW1

The apartment has been comprehensively updated to create a bright central London home. There is a modern fitted kitchen with breakfast bar, pocket doors open to the reception-dining room providing a bright dual aspect living space with a bay window. There is a double bedroom and a modern bathroom suite with a utility cupboard housing a washing machine.



Melcombe Place, London, NW1



Total area: approx. 53.5 sq. metres (576.0 sq. feet)