



Price

£950 PCM

Fees Apply



Available 24/06/26

St Johns Road
Swalecliffe CT5

Wards

Helping you move forwards



Main Features

- One bedroom apartment recently redecorated and has new carpets
- Allocated parking through security gates
- Bike Shed
- Popular location
- Private own garden

Accommodation

- Bedroom 3.0m x 3.38m
- Living Room 3.9m x 3.65m



Deposit required is £1,096.15
Canterbury District - Council Tax Band Tax Band A

Renting a property is a big commitment and we recommend that you visit the local authority website and these websites which offer helpful information and advice about letting

www.gov.uk/government/publications/how-to-rent

www.gov.uk/private-renting

www.wardsofkent.co.uk/renting/tenancy-fees-individuals/

www.gov.uk/green-deal-energy-saving-measures

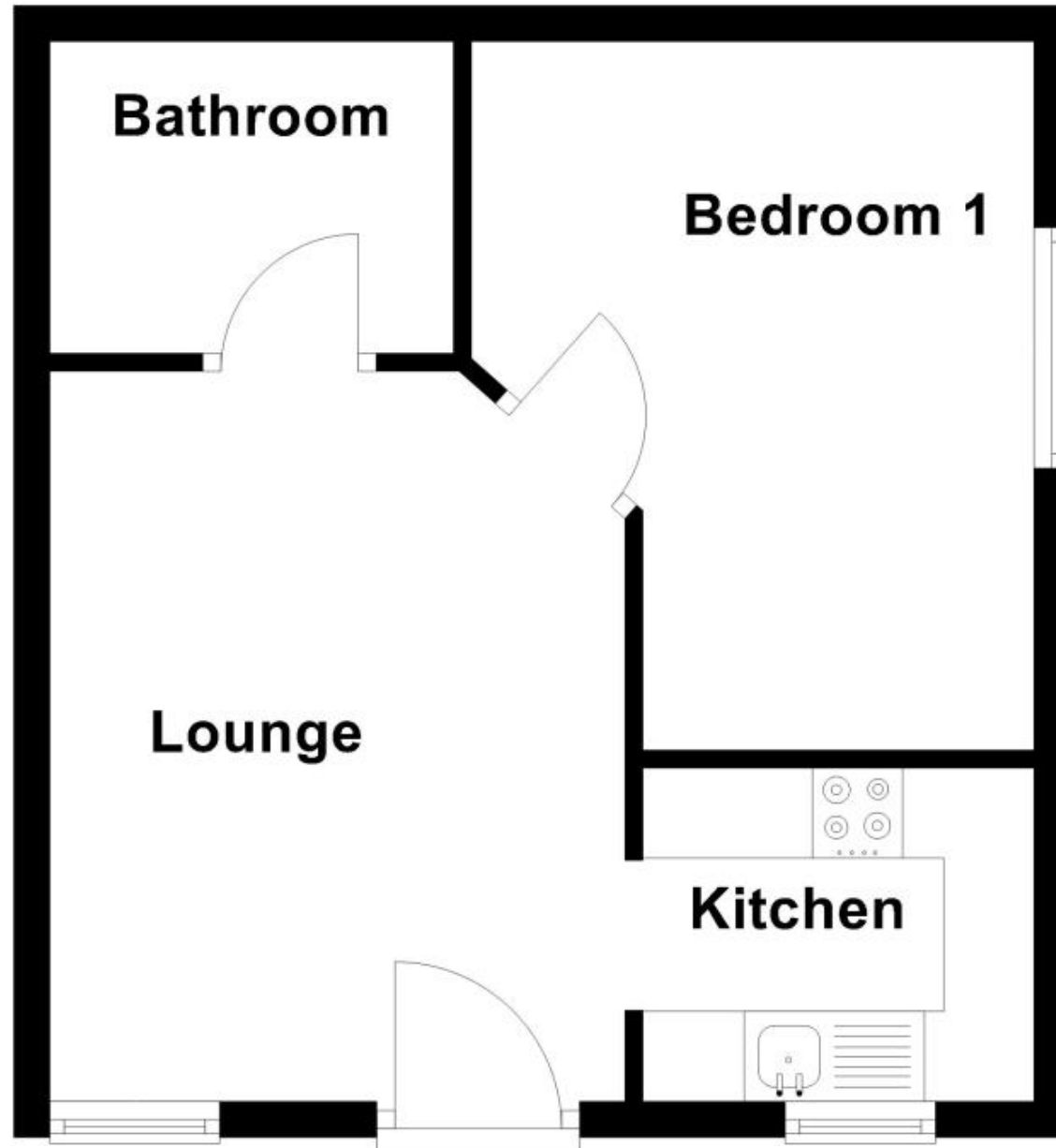
Call Herne Bay 01227 361740 ■ wardsofkent.co.uk

IMPORTANT INFORMATION: Please contact our Lettings Team who will confirm the total costs involved in renting this property. For clarification, we wish to inform the prospective tenant that we have prepared these details as a general guide. The agent has not carried out a detailed survey nor tested the services, appliances, or specific fittings (unless otherwise stated), and no warranty can be given as to their condition. All room measurements are taken at floor level. We strongly recommend that all the information which we provide about the property is verified by yourself and your advisers. The contents of this publication are © Wards, 2015. Wards is a trading name of Arun Estates Limited Registered in England No. 2597969



Ground Floor

Approx. 32.1 sq. metres (345.8 sq. feet)



Total area: approx. 32.1 sq. metres (345.8 sq. feet)