



Plough Lane, SW17

£500,000

Offers In Excess OF

A beautifully presented top floor two double bedroom apartment in this modern development with views over the London skyline. The property also benefits from an open-plan kitchen/reception room with built in air conditioning, two bathrooms, a private south facing balcony and long lease. This well sort after development is situated in the heart of Summerstown and is complete with 24 hour concierge and a private parking space. The top floor balcony is a real highlight of the property, offering a lovely place to unwind and enjoy beautiful sunset views.

The location is equally appealing, with excellent access to a range of commuting routes that make daily travel easy and efficient. Orton House is within close proximity to Wimbledon, Tooting and Earlsfield town centres and their vast amenities, the property is well located for an eclectic mix of shops, bars and restaurants as well as the excellent transport links via Earlsfield & Tooting Broadway stations.

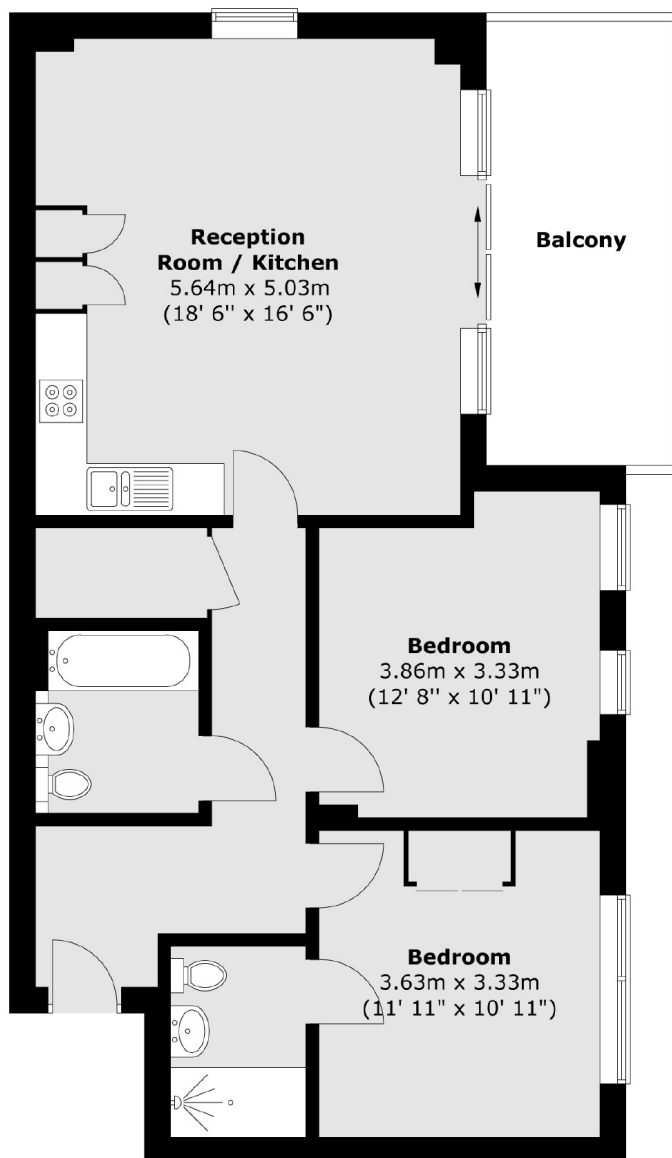
Features

Offers In Excess OF

- Two Double Bedrooms
- Two Bathrooms
- South Facing Private Balcony
- Top Floor Apartment
- 24 Hour Concierge
- Private Parking Space
- Air Conditioning

Plough Lane, London, SW17

Seventh Floor



Total area (approx.) : 75.6 sq. m (814 sq. ft)
Total balcony area (approx.) : 10.3 sq. m (110 sq. ft)