



Because property is personal with...

Mildred Avenue, Northolt

BELVOIR!

Offers in excess of £575,000



Key Features

- Beautifully presented family semi-detached home
- Three double bedrooms
- Three bathrooms
- Large lounge and large kitchen diner
- Generous rear garden
- Garage & driveway parking
- EPC rating - awaited
- Freehold





Situated on the popular Mildred Avenue, Northolt, this tastefully presented traditional semi-detached house offers a perfect blend of comfort and convenience for families. The property boasts three exceptionally generous bedrooms, which provide the flexibility to be transformed into a four or even five-bedroom home, catering to your evolving needs.

Upon entering, you are welcomed by a spacious lounge that invites relaxation and family gatherings. The well-appointed kitchen is designed for both functionality and style, making it an ideal space for culinary enthusiasts. The property also features three modern contemporary bathrooms, ensuring ample facilities for the entire household.

One of the standout features of this home is the large, sunny garden, perfect for outdoor entertaining or simply enjoying the fresh air. Additionally, the property includes a garage and driveway parking, providing practical solutions for your vehicle needs.

Location is key, and this home does not disappoint. It is within walking distance to both Northolt Parks Chiltern and Central Line stations, making commuting a breeze. Nearby amenities, including an Asda supermarket and well-regarded local schools, further enhance the appeal of this property.

In summary, this charming family home in Mildred Avenue is a rare find, offering generous living spaces, modern conveniences, and a prime location. It is an excellent opportunity for those seeking a comfortable and versatile residence in a highly sought-after area.

GROUND FLOOR

Entrance

Via uPVC front door into:

Entrance Porch

Door to:

Lounge 6.69m x 4.86m (21'11" x 15'11")

(Maximum measurements) uPVC double glazed window to front aspect. Glazed double doors to kitchen/diner. Stairs rising to first floor with storage beneath. Two column radiators.

Kitchen/Diner 7.49m x 3.04m (24'7" x 10'0")

uPVC double glazed window to rear aspect and patio doors to garden. Fitted with a range of base and wall mounted cabinets with granite work surfaces. Inset stainless steel single bowl sink with chrome mixer tap and drainer grooves. Stainless steel built in oven and four burner gas hob with chimney hood extractor over. Space fridge freezer. Space and plumbing for washing machine and dishwasher.

Bathroom

Suite comprising enclosed bath, hand wash basin and low level flush WC. Extractor. Chrome towel radiator.

FIRST FLOOR

Landing

Stairs rising to second floor. Doors to all rooms.

Bedroom 6.12m x 3.35m (20'1" x 11'0")

(Maximum measurements) Dual aspect room with uPVC double glazed windows to front and rear aspect. Radiator.

Bedroom 5.27m x 2.4m (17'4" x 7'11")

Dual aspect room with uPVC double glazed windows to front and rear aspect. Radiator.

Shower Room

uPVC obscure double glazed window to rear aspect. Suite comprising shower cubicle, hand wash basin and low level flush WC. Extractor. Chrome towel radiator.



SECOND FLOOR

Landing

Velux window to front aspect. Doors to bedroom and shower room.

Bedroom 5.26m x 3.35m (17'4" x 11'0")

(Maximum measurements) Dual aspect room with uPVC double glazed window to rear aspect and Velux window to front aspect. Radiator.

Shower Room

uPVC obscure double glazed window to rear aspect. Suite comprising shower cubicle, hand wash basin and low level flush WC. Extractor. Chrome towel radiator.

EXTERIOR

Driveway

Providing off-street parking for 2-3 vehicles and leading to garage.

Garage 5.27m x 2.4m (17'4" x 7'11")

Single garage with power & lighting. Courtesy door.

Rear Garden

Fence enclosed with gated side access. Decked entertaining area covered by full width lean-to pergola. Steps down to generous established lawn area. Path leading to large metal storage shed.

PROPERTY INFORMATION

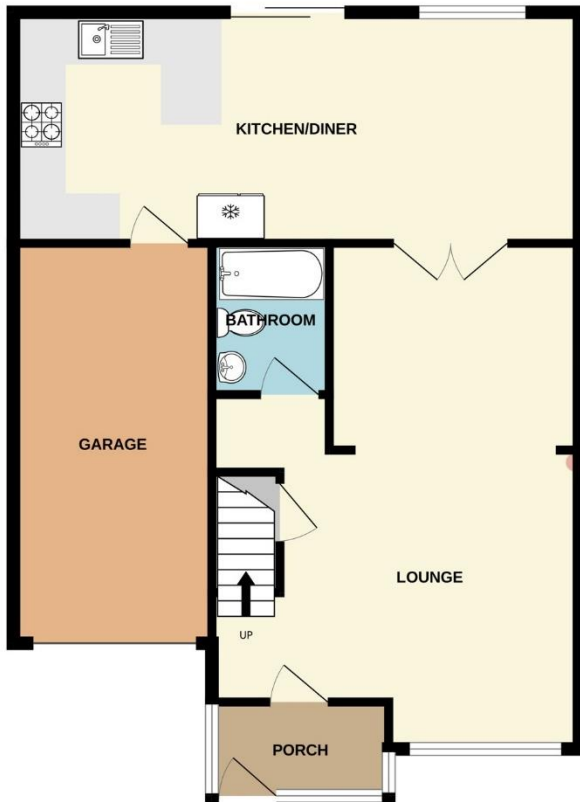
Council Tax - Band D | EPC Rating - Awaited

DISCLAIMER

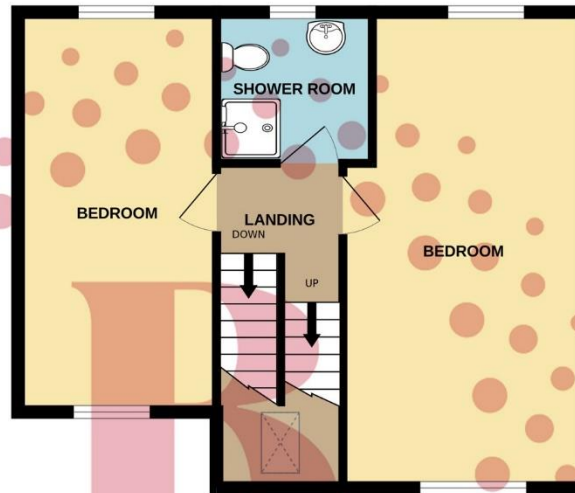
Every care has been taken with the preparation of these particulars, but they are for general guidance only and complete accuracy cannot be guaranteed. If there is any point, which is of particular importance please ask or professional verification should be sought. All dimensions are approximate. The mention of fixtures, fittings and/or appliances does not imply they are in full efficient working order. Photographs are provided for general information and it cannot be inferred that any item shown is included in the sale. These particulars do not constitute a contract or part of a contract.



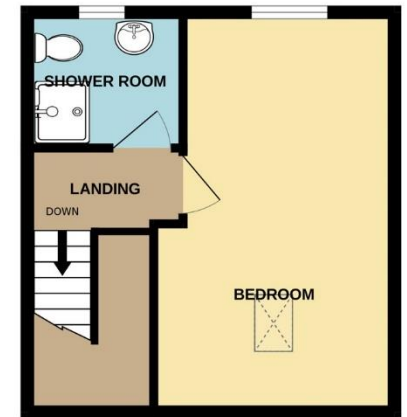
GROUND FLOOR
761 sq.ft. (70.7 sq.m.) approx.



1ST FLOOR
476 sq.ft. (44.3 sq.m.) approx.



2ND FLOOR
274 sq.ft. (25.5 sq.m.) approx.



TOTAL FLOOR AREA : 1511 sq.ft. (140.4 sq.m.) approx.

Whilst every attempt has been made to ensure the accuracy of the floorplan contained here, measurements of doors, windows, rooms and any other items are approximate and no responsibility is taken for any error, omission or mis-statement. This plan is for illustrative purposes only and should be used as such by any prospective purchaser. The services, systems and appliances shown have not been tested and no guarantee as to their operability or efficiency can be given.
Made with Metropix ©2026

BELVOIR!