



Lansdowne Road, Tonbridge TN9

Guide Price £625,000 – £650,000

bracketts est. 1828



Bracketts are proud to present this exceptional Victorian semi-detached family home in the highly coveted Slade area of Tonbridge.

Ideally positioned within easy reach of Slade Primary School, the High Street, Tonbridge Castle, Tonbridge Park, picturesque river walks and the mainline station, the property effortlessly combines lifestyle, convenience, and connectivity. Making it ideal for families and commuters alike.

The interior has been meticulously enhanced seamlessly blending elegant period character with contemporary design. Internally comprising entrance hall leads to a sitting room, featuring a striking bay window, feature fireplace, and bespoke fitted cabinetry. To the rear, an open plan dining space flows effortlessly into a stylish, fully fitted contemporary kitchen complete with a breakfast bar creating an ideal setting for both everyday living and entertaining. To the first floor the property offers three bedrooms with the master bedroom offering feature fireplace and stripped wooden floor boards alongside a well-appointed, modern family bathroom. Externally, the home continues to impress with landscaped side and rear gardens, featuring mature planting, established trees, and well-curated borders. An artificial lawn provides year round ease of maintenance, while to the front a private driveway offers off-road parking for two vehicles which is a rare advantage in this desirable location. This is a home of genuine quality and character, offering a rare blend of period elegance and modern comfort in one of Tonbridge's most sought-after settings. Early viewing is highly recommended

Council Tax band: D

Tenure: Freehold

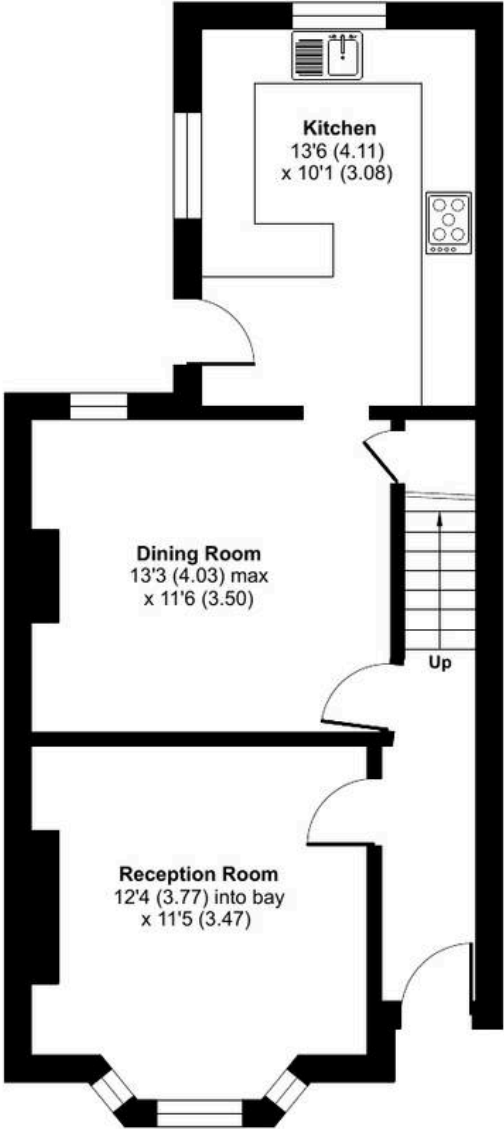




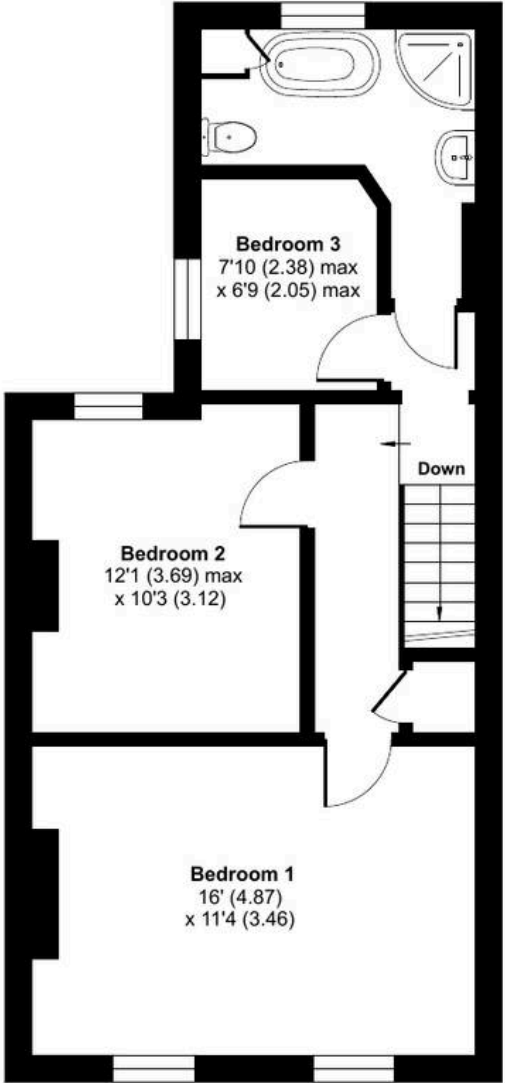
Lansdowne Road, Tonbridge, TN9

Approximate Area = 1056 sq ft / 98.1 sq m

For identification only - Not to scale



GROUND FLOOR



FIRST FLOOR

