

Head Office:
Dixon Kelley Estate Agents
1 Penn Court
Station Road, West Moors
Dorset. BH22 0JJ

DORSET PARK HOMES

DRAFT

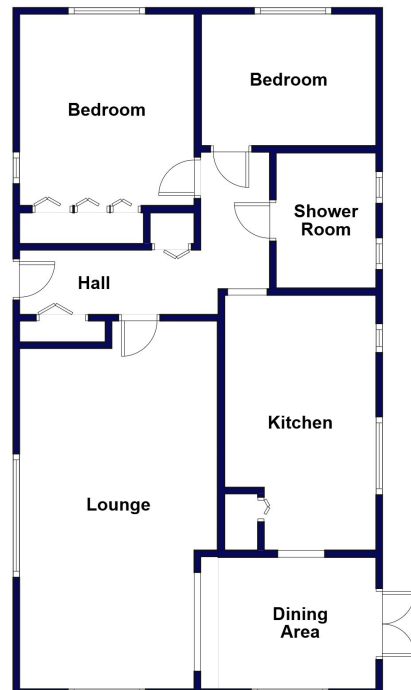
www.dorsetparkhomes.com

Telephone: 01202 877511

27 Gladelands Park, Ferndown, Dorset. BH22 9BW



Popular Residential Park Close to Shops & Services



This drawing has been prepared for diagrammatic purpose only. Not to scale

2-Bedroom Park Home approx 36' x 20'

Accommodation & approximate room dimensions:

- Omar 'Ashdale' Park Home circa 1983
- Hall: Cloaks cupboard & broom cupboard
- Kitchen: approx 13'7" x 8'1". Range of base and wall cupboards. Built-in oven, & hob. Space for fridge & freezer. Space for washing machine & tumble dryer. Space for dishwasher. Wall mounted Worcester combination gas boiler.
- Dining Area: approx 9'7" x 7'. Double doors to garden. Archway to:
- Lounge: approx 19'8" x 10'7". Feature fireplace.
- Bedroom 1: approx 10'3" x 9'4". Fitted wardrobes.
- Bedroom 2: approx 9'4" x 7'.
- Shower Room: Large shower cubicle. Vanity wash basin & WC.
- PVCu Double-Glazing
- Gas Central Heating (system untested)
- Parking on Plot
- Private Garden with lawn & patio. Concrete Shed
- Age Restriction 50+ No Pets
- Well maintained Residential Park close to major supermarkets, local amenities & bus services.

Well Presented Park Home



Kitchen



Lounge



Dining Area



Rear Elevation

Pitch Fee: approx £202.24 per month

Subject to Annual Review

Council Tax Band: 'A'

Tenure: 1983 Mobile Homes Act Agreement

Price £100,000

VIEWING STRICTLY BY APPOINTMENT WITH THE VENDOR'S AGENT Dorset Park Homes 01202 877511

IMPORTANT NOTE: These particulars are believed to be correct but their accuracy is not guaranteed. They do not form part of any contract. Nothing in these particulars shall be deemed to be a statement that the property is in good structural condition or otherwise, nor that any of the services, appliances, equipment or facilities are in good working order or have been tested. Purchasers should satisfy themselves on such matters prior to purchase Ref.W05246

The recommended specialist in Park Home sales
Proprietor: Simon Dixon

