

Asking Price £295,000

Jayman  
www.jayman.co.uk

Estate Agents



**Monks Close**

Lichfield, WS13 6QR

# Monks Close, Lichfield, WS13 6QR

Jayman present this top-floor apartment located in Lichfield City Centre.

Ideally located in central Lichfield, designed for purchasers over the age of 60, this thoughtfully designed, well-equipped apartment benefits from an entrance hallway with intercom system, leading to an open-plan kitchen and living room. The main bedroom benefits from a built-in wardrobe and a Jack & Jill style shower room, with the second bedroom having sliding-door access to the living area.

Chapter House has lift access to all floors, and also offers a communal lounge and well-maintained, landscaped gardens.

Leasehold Information - we are advised by the seller that there are approximately 992 years remaining on the lease.

There is an annual service charge of £6,515.53

There is an annual ground rent charge of £300.00

Parking £250 per annum, subject to availability.

## Monks Close, Chapter House

### Entrance Hallway

With storage cupboards and intercom system, with doors leading to;

### Bedroom 1 13'2" x 10'10" (4.03 x 3.31)

Good-size double bedroom, with floor-to-ceiling windows and built-in storage.

Access to bathroom.

### Bathroom

Modern bathroom with double shower, wash basin, wc and emergency pull cord.

### Bedroom 2 / Dining Room 8'0" x 13'1" (2.45 x 4.0)

Second bedroom / dining room with floor-to-ceiling windows and sliding door leading to open plan living area.

### Kitchen 15'5" x 10'9" (4.71 x 3.28)

Spacious, well-equipped fitted kitchen with a variety of storage cupboards and integrated appliances, including oven, electric hob with overhead extractor, microwave and dishwasher. The kitchen also features a storage cupboard with washing machine and tumble dryer, and space for a dining table and chairs.

Open plan to living room.

### Living Room 12'4" x 16'5" (3.77 x 5.01)

Generous living space with vaulted ceiling, and windows to fore and side.

**REQUIRE A MORTGAGE?** Our independent advisor can compare "whole of market" to help find the best mortgage to suit your circumstances. Please call 01543 416 567 for a free mortgage quote including some deals only available through our network. **LEGAL CONVEYANCING** Jayman Conveyancing provides fast efficient low cost legal work with a no sale-no fee guarantee. Call 01543 416 567. **AGENTS DESCRIPTIONS** These details imply the opinion of the agent at the time these details were prepared and are subjective. It may be that the purchaser's opinion differs. **VIEWING ARRANGEMENTS** By appointment only with Jayman on 01543 416 567 **COUNCIL TAX** Please refer to [www.voa.gov.uk](http://www.voa.gov.uk) for this information. **DESCRIPTIONS AND MEASUREMENTS** All measurements are approximate and some may be maximum on irregular walls. The plan shows the approximate layout of the rooms to show the inter relationship of relationship of one room to another but is not necessarily to scale. **CONSENTS** We have not had sight of any relevant building regulations, guarantees or planning consents and all relevant documentation pertaining to this property should be checked by your legal advisor before exchanging contracts.

### Outside

Well-maintained communal gardens.

### Like it? We can help you buy it!

Thinking of making this property your next home? At Jayman, we are here to help make the move as smooth and stress-free as possible.

Whether you require mortgage advice, help arranging finance, or need to sell your current property in order to secure your next purchase, our experienced team is on hand to guide you every step of the way.

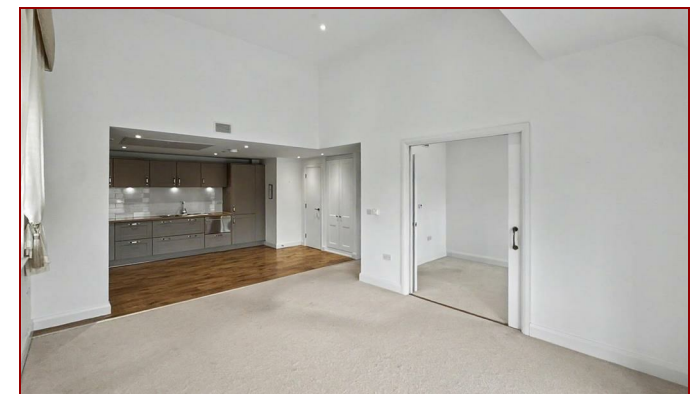
Please speak to a member of our team for further information on how we can assist you and to arrange a free valuation of your home.

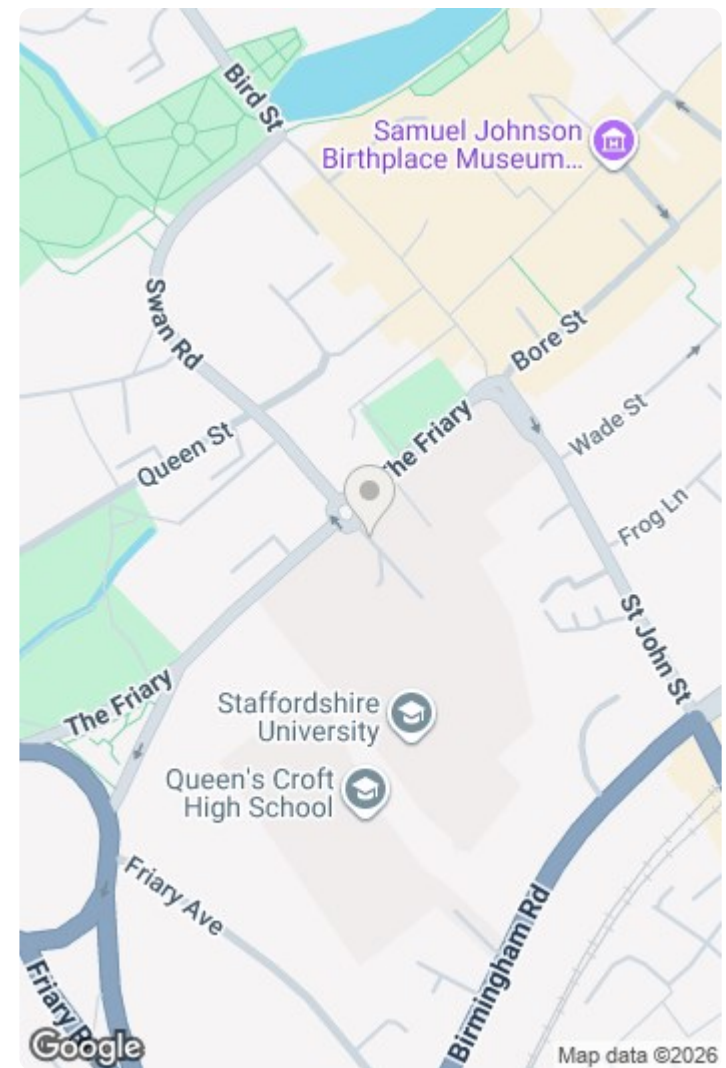
### Disclaimer and AML checks

#### MONEY LAUNDERING REGULATIONS

Should a purchaser(s) have an offer accepted on a property marketed by Jayman, they will need to undertake an identification check and asked to provide information on the source and proof of funds. This is done to meet our obligation under Anti Money Laundering Regulations (AML) and is a legal requirement. We use a specialist third party service together with an in-house compliance team to verify your information. The intending purchaser(s) will be asked to pay a non-refundable compliance fee of £30.00 inc. VAT per buyer for these checks and will be required to be paid in advance when an offer is agreed and prior to a sales memorandum being issued.

- 1: These particulars do not constitute part or all of an offer or contract.
- 2: The measurements indicated are supplied for guidance only and as such must be considered incorrect.
- 3: Potential buyers are advised to recheck the measurements before committing to any expense.
- 4: Jayman has not tested any apparatus, equipment, fixtures, fittings or services and it is the buyers interests to check the working condition of any appliances.
- 5: Jayman has not sought to verify the legal title of the property, and the buyers must obtain verification from their solicitor.





Energy Efficiency Rating		Environmental Impact (CO <sub>2</sub> ) Rating	
	Current	Target	
Very energy efficient - lower running costs			Very environmentally friendly - lower CO <sub>2</sub> emissions
101-120 A			101-120 A
81-100 B			81-100 B
61-80 C			61-80 C
41-60 D			41-60 D
21-40 E			21-40 E
1-20 F			1-20 F
0 G			0 G
For energy efficient - higher running costs			For environmentally friendly - higher CO <sub>2</sub> emissions
England & Wales	EU Directive 2002/91/EC		England & Wales
			EU Directive 2002/91/EC

We endeavour to make our sales details accurate and reliable but they should not be relied on as statements or representations of fact and they do not constitute any part of an offer or contract. The seller does not make any representation or give any warranty in relation to the property and we have no authority to do so on behalf of the seller. Services, fittings and equipment referred to in the sales details have not been tested (unless otherwise stated) and no warranty can be given as to their condition. We would strongly recommend that all information, which we provide, about the property is verified by yourself or your advisers.

