

32a Seymour Road, Cheadle Hulme, Cheadle, SK8 6LR

Harratts Property Services proudly presents this exceptional six-bedroom detached home, ideally located on the desirable Seymour Road in Cheadle Hulme. Offering a seamless blend of contemporary design, generous living space, and family-friendly functionality, this impressive property is arranged over three beautifully presented floors.

Upon entering, you're greeted by a welcoming entrance hallway that leads to a stylish reception room — spacious, and thoughtfully designed to set the tone for the rest of the home.

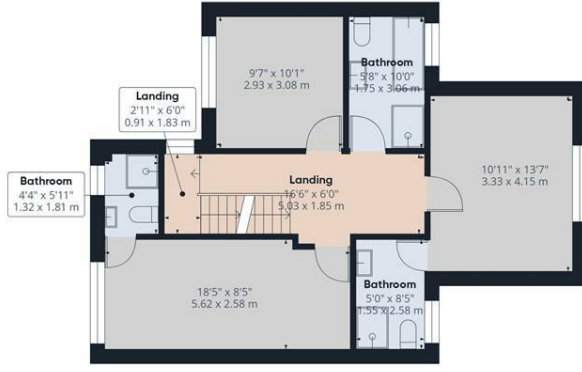
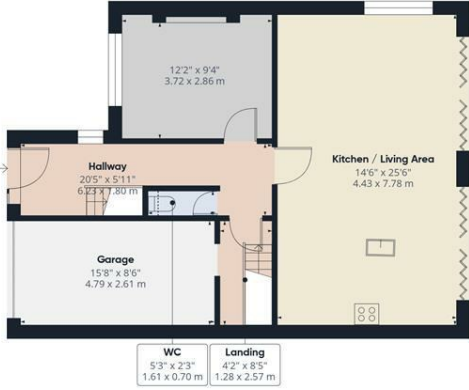
At the heart of the property lies a stunning open-plan kitchen and dining area, perfect for entertaining or everyday family living. The kitchen is fitted with sleek integrated appliances and enhanced by two sets of bi-fold doors that open out to a generous rear patio and a well-maintained lawned garden.

The home benefits from four modern bathrooms, including two luxurious en-suites, ensuring comfort and convenience for all. A downstairs W/C adds further practicality to the ground floor layout.

Additional features include a separate utility room and an integral garage, providing excellent storage and functionality throughout.

£775,000

- ****Chain Free****
- **Detached Three Floor Property**
- **Six Bedrooms**
- **Four Bathrooms**
- **Impressive Open-Plan Kitchen/Diner**
- **Integrated Appliances In Kitchen**
- **Two Bi-Fold Doors Opening Onto Rear Patio**
- **Downstairs W/C**
- **Integral Garage**
- **Over 1,700sqft**



Approximate total area^m
1799 ft²
167.1 m²

Reduced headroom
123 ft²
11.5 m²

(1) Excluding balconies and terraces

Reduced headroom
----- Below 5 ft/1.5 m

Calculations reference the RICS IPMS 3C standard. Measurements are approximate and not to scale. This floor plan is intended for illustration only.

GIRAFFE360

