



ELVERTON STREET
WESTMINSTER

JACKSON-STOPS 

ELVERTON STREET WESTMINSTER, SW1P

ASKING PRICE: £775,000

A well appointed first floor two bedroom apartment is presented to the market in Westminster, SW1.

With a contemporary finish throughout and well-proportioned rooms including a smart open kitchen / reception room this property has the added benefit of private parking. This would suit all those looking for a prime central pied-a-terre or first time buy as well as those looking to capitalise on the rental yields available. Cobbold Court is located just off Horseferry road, only 0.6 miles from Victoria mainline station.

Tenure: Leasehold - 161 Years remaining

Service Charge: £1,899 pa

Local Authority: Westminster

KEY FEATURES

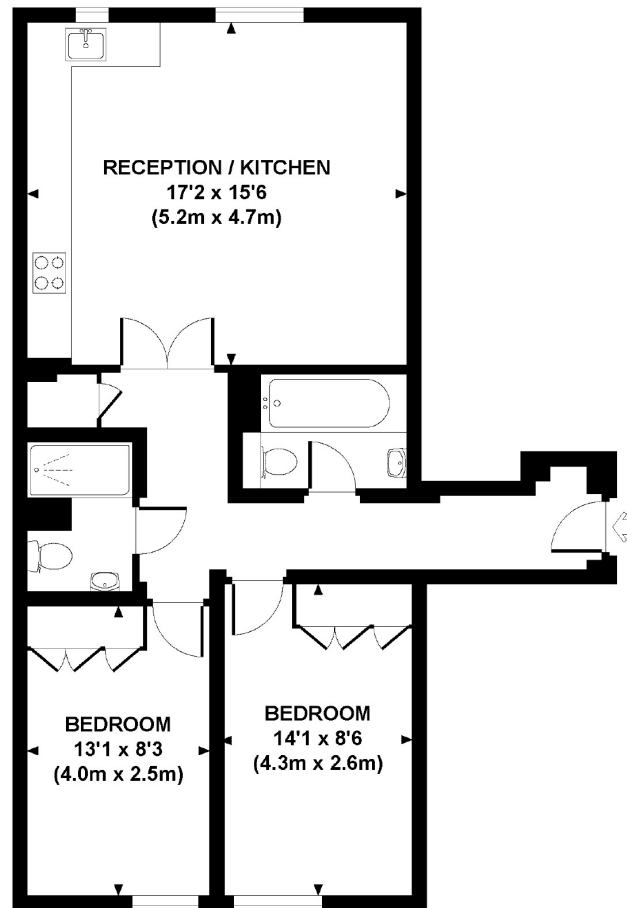
- Modern Block
- Two Bedrooms
- Tax Band: E
- Lift
- Communal Terrace
- Underground Parking





COBBOLD COURT, ELVERTON STREET, SW1

Approx. gross internal area
714 Sq Ft. / 66.4 Sq M.



FIRST FLOOR



All measurements are approximate and for illustration purposes only as defined by theRICS Code of Measuring Practice © 2014
Drawing Room Design www.drawingroomdesign.com 020 7549 9833

Energy Rating: B. We aim to make our particulars both accurate and reliable. However they are not guaranteed; nor do they form part of an offer or contract. If you require clarification on any points then please contact us, especially if you are travelling some distance to view. Please note that appliances and heating systems have not been tested and therefore no warranties can be given as to their good working order.

ASKING PRICE: £775,000

PIMLICO

020 7828 4050

pimlicosales@jackson-stops.com

jackson-stops.co.uk

JACKSON-STOPS