

Delaware Court, Gunnislake, PL18

Guide Price £240,000

3 1 1

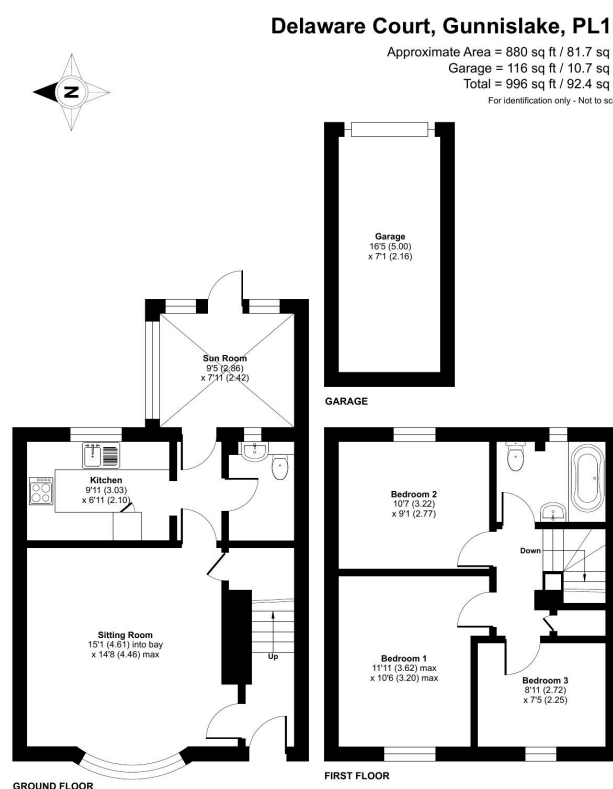


A wonderful opportunity to purchase a three-bedroom extended terraced home, set within an exclusive courtyard development. The property benefits from off-road parking for two vehicles, a single garage, and is offered to the market with no onward chain.

Situated in the village of Drakewalls, approximately 4.7 miles from Callington and 5.6 miles from Tavistock. Local amenities include a convenience store with a petrol station, primary schools, pubs, and a train station with regular services to and from Plymouth. The surrounding area offers idyllic countryside walks, with Cotehele House and Estate, Kit Hill, and the Tamar Valley all nearby.

Key Features

- TO ARRANGE A VIEWING PLEASE QUOTE BL0650
- No Onward Chain
- Garage
- Spacious Bay-Fronted Reception Room
- Exclusive Courtyard Development
- Three Bedrooms
- Front & Rear Gardens
- Off-Road Parking For Two Vehicles
- Family Bathroom & Downstairs W/C
- Freehold



Floor plan produced in accordance with RICS Property Measurement Standards incorporating International Property Measurement Standards (IPMS2 Residential). © richcom 2025. Produced for Ben Estates TA Ben Langton Powered By exp. REF: 1374608