



Scotts Avenue, TW16

£425,000

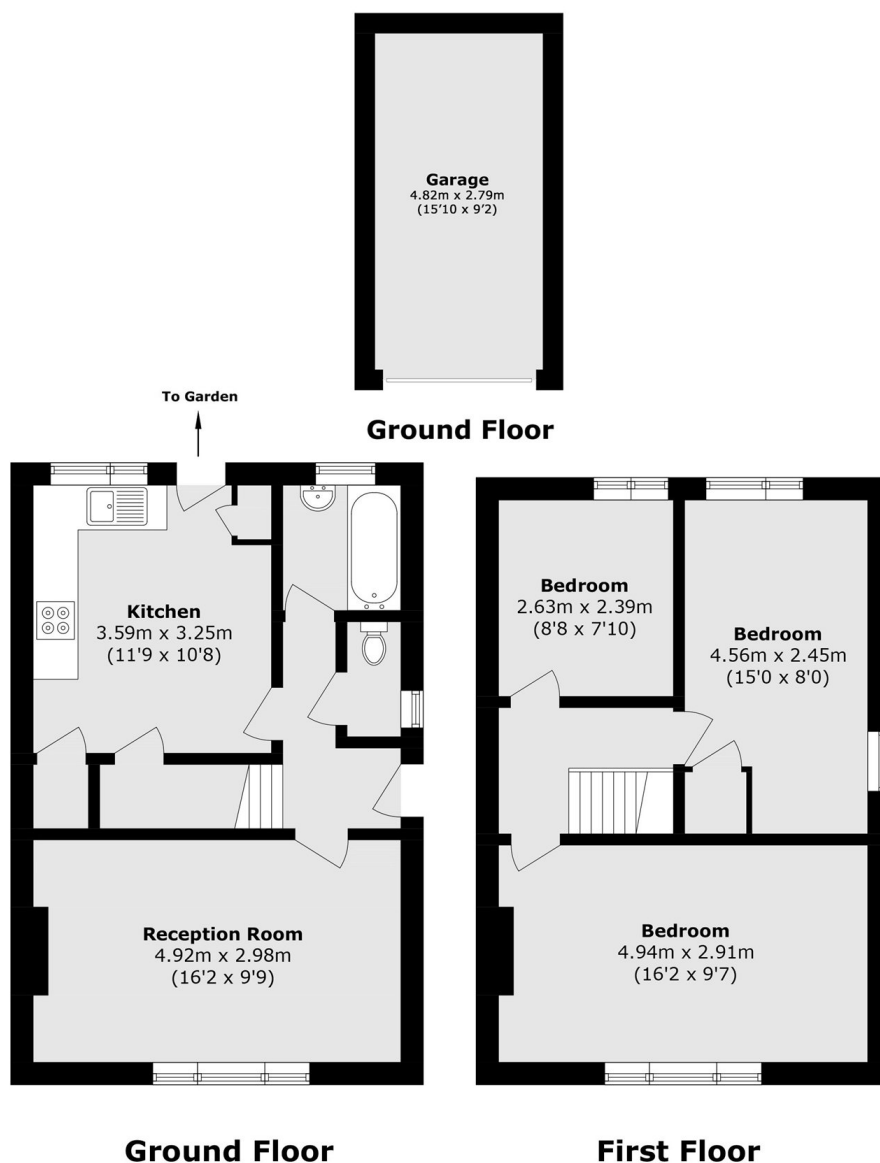
A three bedroom semi-detached house with off-street parking, a garage and a private rear garden. The property is being sold with no forward chain and would be perfect for a buyer that is looking for a home that they can put their own stamp on.

Scotts Avenue is a wonderful location, this premier road is located off of Cadbury Road and is ideal for families. The shops at Sunbury Cross and Sunbury Station which provides a direct service into London Waterloo is just over half a mile away.

Features

- Semi-Detached
- Three Bedrooms
- Off-Street Parking
- Garage
- Private Rear Garden
- No Forward Chain

Scotts Avenue, Sunbury-On-Thames, TW16



Total area (approx.): 75.2 sq. m (809.4 sq. ft)
Garage area (approx.): 13.4 sq. m (144.2 sq. ft)