



Asking Price £160,000  
Carlton Court, Hulse Road, SO15 2JZ



2

Bedrooms



1

Bathroom



1

Receptions





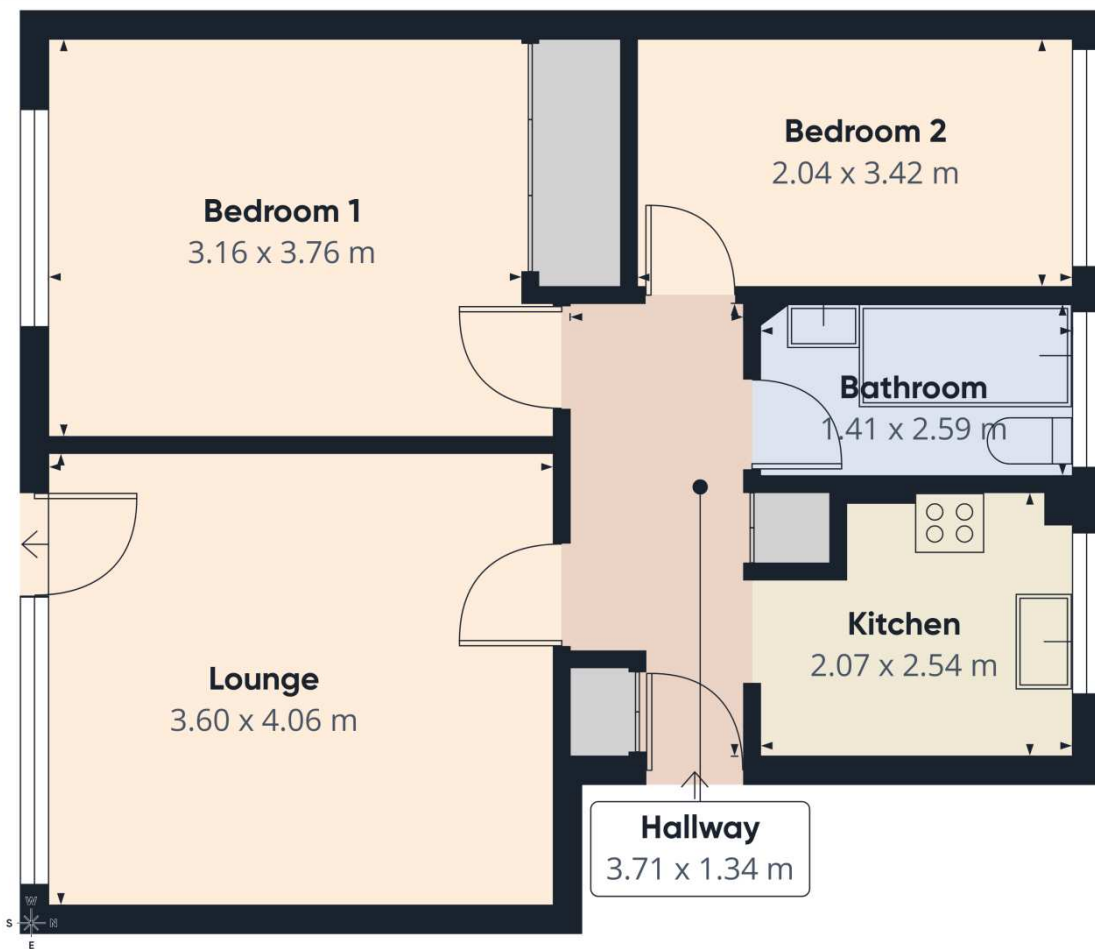


- No Forward Chain
- Convenient City Centre Location
- Two Well-Proportioned Bedrooms
- Juliet Balcony
- First Floor Apartment
- Resident Parking Permit

We are pleased to bring to the market this well-presented two-bedroom first-floor flat, ideally positioned within a popular and well-established residential area of Southampton. The property offers well-planned accommodation throughout, making it an excellent choice for first-time buyers, professionals, or investors alike.

The accommodation comprises two well-proportioned bedrooms, with the master bedroom benefiting from fitted wardrobes providing ample storage. There is a fitted kitchen with a range of units and worktop space, a spacious lounge that benefits a juliet balcony, and a well-appointed bathroom suite.

The property is conveniently located within easy reach of a variety of local amenities, public transport links, and Southampton city centre, ensuring excellent accessibility for shopping, leisure, and commuting.



Approximate total area<sup>(1)</sup>  
49.9 m<sup>2</sup>

(1) Excluding balconies and terraces

Calculations reference the RICS IPMS  
3C standard. Measurements are  
approximate and not to scale. This  
floor plan is intended for illustration  
only.

GIRAFFE360



Tel : 01489 584 298

Email : [hello@chimneypotsestateagents.co.uk](mailto:hello@chimneypotsestateagents.co.uk)

Address : 32 Bridge Rd, Park Gate, Southampton SO31 7CF

