

Marlow Road

Maidenhead • Berkshire • SL6 7AA

Guide Price: £320,000



coopers
est 1986

Marlow Road

Maidenhead • Berkshire • SL6 7AA

Two bedroom ground floor apartment, situated on Marlow Road and conveniently located within easy reach of Maidenhead town centre, excellent transport links including Maidenhead train station and the Elizabeth Line, as well as a variety of local amenities, shops, restaurants and green spaces.

The property comprises a bright and spacious open plan kitchen/living/dining room, two well proportioned double bedrooms, with the main bedroom benefitting from fitted storage and an en-suite shower room. A modern family bathroom and additional storage cupboards complete the accommodation. Outside, the property offers a private courtyard terrace and gated allocated parking.

Modern apartment

Ground floor

Private patio

Open plan living

Two double bedrooms

En-suite & family bathroom

Well maintained throughout

Gated Parking

In the heart of Maidenhead

Walking distance to Elizabeth Line

These particulars are intended as a guide and must not be relied upon as statements of fact. Your attention is drawn to the Important Notice on the last page.

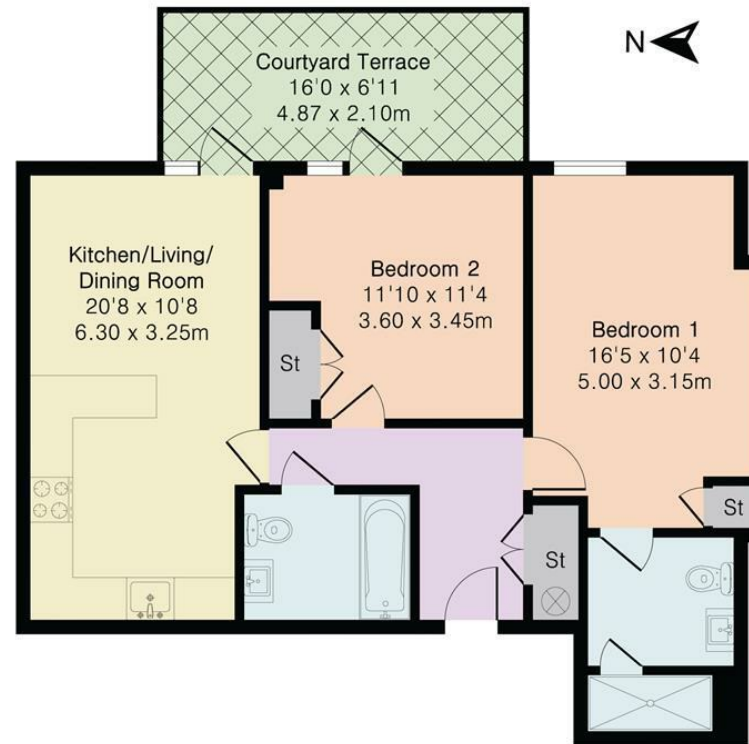




Marlow Road, Maidenhead, SL6

Main House Area = 722 sq ft / 67.1 sq m

For Identification only - Not to scale



Lower Ground Floor



Floor plan produced in accordance with RICS Property Measurement 2nd Edition. Although Pink Plan Ltd ensures the highest level of accuracy, measurements of doors, windows and rooms are approximate and no responsibility is taken for error, omission or misstatement. These plans are for representation purposes only and no guarantee is given on the total square footage of the property within this plan. The figure icon is for initial guidance only and should not be relied on as a basis of valuation.



42 Queen Street, Maidenhead,
SL6 1HZ
maidenhead@coopersresidential.co.uk

CoopersResidential.co.uk

Energy Efficiency Rating		Current	Target
Very energy efficient - lower running costs	A		
Energy efficient - lower running costs	B		
Decent energy efficiency - lower running costs	C		
Some energy efficiency - lower running costs	D		
Not very energy efficient - higher running costs	E	51	51
Least energy efficient - higher running costs	F		
Very least energy efficient - higher running costs	G		

England & Wales
EPC Directive
2002/91/EC

Important Notice: These particulars, whilst believed to be accurate are set out as a general outline only for guidance and do not constitute any part of an offer or contract. Intending purchasers should not rely on them as statements or representation of fact, but must satisfy themselves by inspection or otherwise has the authority to make or give any representation or warranty in respect of the property.