



Casa Ybel Hornash Lane, Shadoxhurst

Offers in Region of £650,000

Skippers

Casa Ybel Hornash Lane

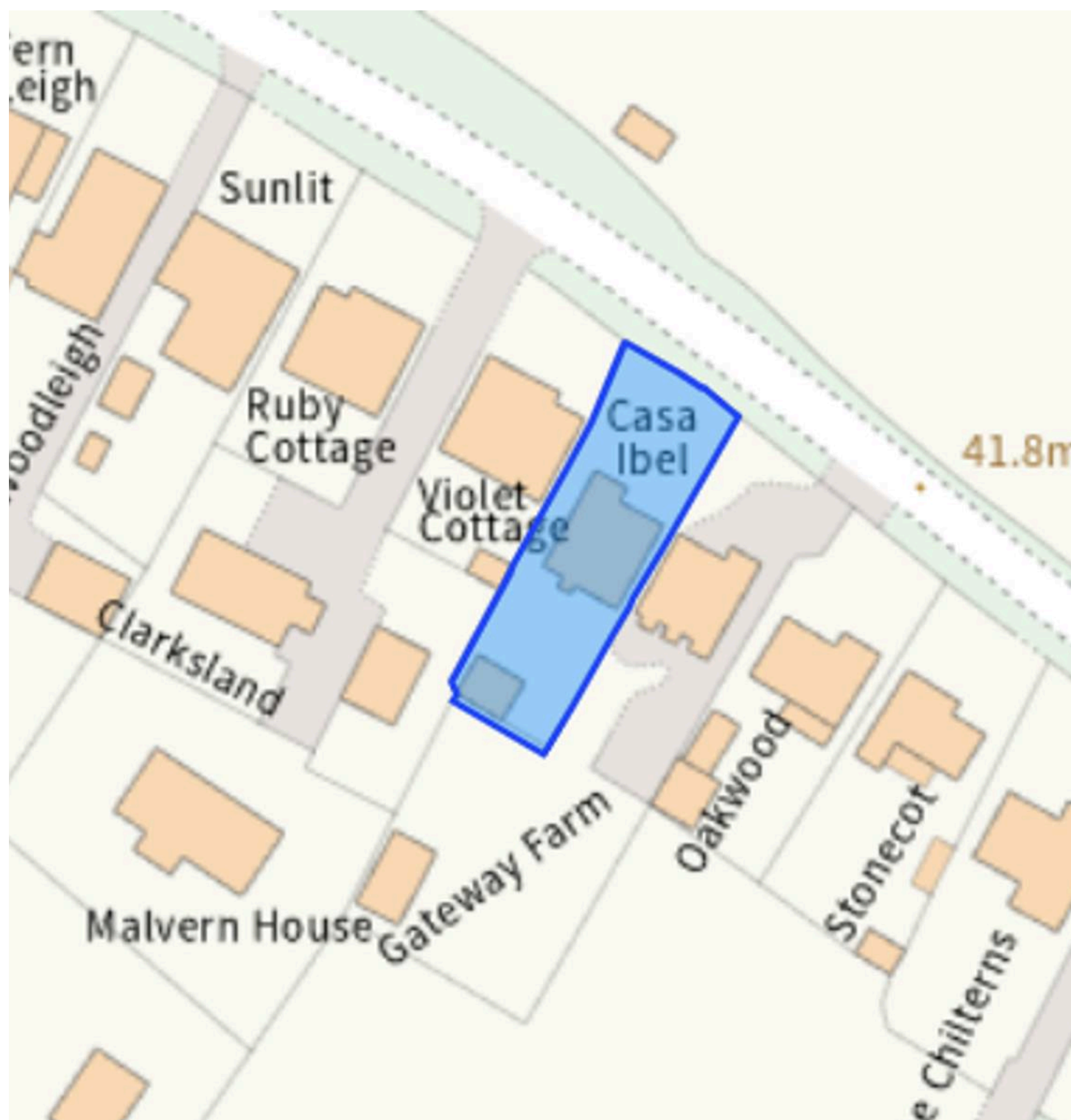
Shadoxhurst, Ashford

Semi-rural gem in Shadoxhurst village, 5/6-bed detached home with annexe & stunning garden. Convenient for Ashford & London, ideal for entertaining with outdoor bar & pizza oven. Live your dream life!

Council Tax band: F

Tenure: Freehold

- Detached 5/6 Bedroom Family Home Offering Flexible Living Accommodation
- Annex with Shower Room
- Kitchen/Breakfast Room with Utility Room
- Semi-Rural Shadoxhurst Village Location with Views over Fields
- Lounge with bi-fold doors to Rear Garden
- Under 5 Miles to Ashford International Train Station with Regular Services to London
- Parking for 7 Vehicles with option for further parking spaces
- Rear Garden with amazing entertaining area comprising brick built pizza oven and bar



Hallway

With stairs to first floor, under stairs cupboard and doors leading kitchen/breakfast room, dining room, cloakroom, lounge, utility room and bedroom 5.

Cloakroom

Wash hand basin with mixer tap, low level wc, obscured window to side, tiled walls.

Kitchen/Breakfast Room

19' 3" x 11' 0" (5.87m x 3.35m)

Range of white gloss soft close cupboards and drawers beneath quartz worksurfaces with additional wall mounted units, water softener, window to front and side, 5 ring induction hob with extractor over, integrated dishwasher, wine fridge and eye level ovens with slide and hide doors, inset spotlights and plinth lighting.

Utility Room

11' 6" x 7' 2" (3.51m x 2.18m)

With door and window to rear, range of cupboards and drawers beneath work surfaces, space and plumbing or washing machine, stainless steel sink with mixer tap and drainer, oil fired boiler, wall mounted units.

Lounge

17' 7" x 14' 10" (5.36m x 4.52m)

Carpeted with bi-fold doors leading to rear garden, living flame effect electric feature fire.

Dining Room

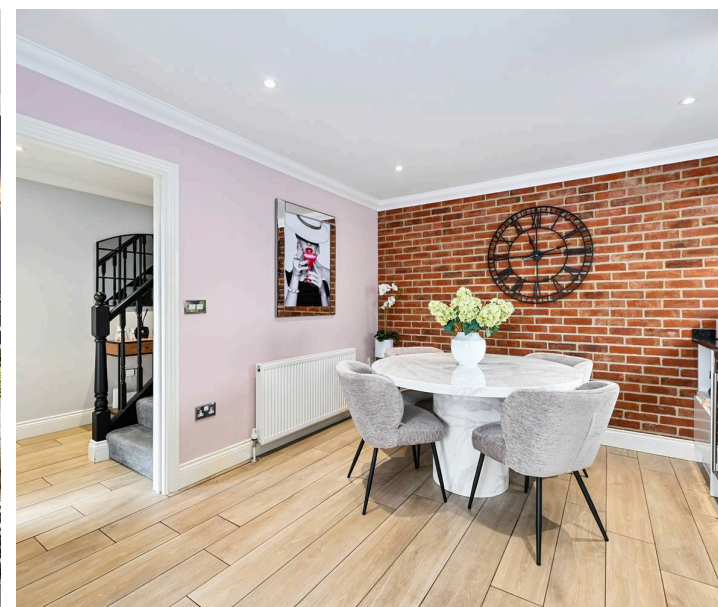
15' 10" x 11' 7" (4.83m x 3.53m)

Carpeted with bay window outlook to front.

Bedroom/Study

8' 3" x 7' 3" (2.51m x 2.21m)

Carpeted with window to side.





Landing

With large storage cupboard and doors leading to bedrooms and family bathroom.

Bedroom

12' 1" x 12' 1" (3.68m x 3.68m)

With 2 bay windows to front with views over fields, carpeted with range of built in wardrobes.

En-suite

Low level wc, wash hand basin with mixer tap, walk in shower with rainforest shower head, extractor fan, locally tiled walls and flooring.

Bedroom

11' 7" x 11' 2" (3.53m x 3.40m)

Carpeted with window to side and built in sliding wardrobes.

Bedroom

11' 7" x 8' 6" (3.53m x 2.59m)

Carpeted with window to rear.

Bedroom

11' 7" x 8' 5" (3.53m x 2.57m)

Carpeted with window to rear.

Family Bathroom

White suite comprising low level wc, wash hand basin with mixer tap and vanity storage under, panelled double ended bath with mixer tap, locally tiled walls and flooring.

Annex accommodation

14' 3" x 13' 11" (4.34m x 4.24m)

With window to front and side and range of built in cupboards beneath worksurfaces and inset spotlights.

En-suite

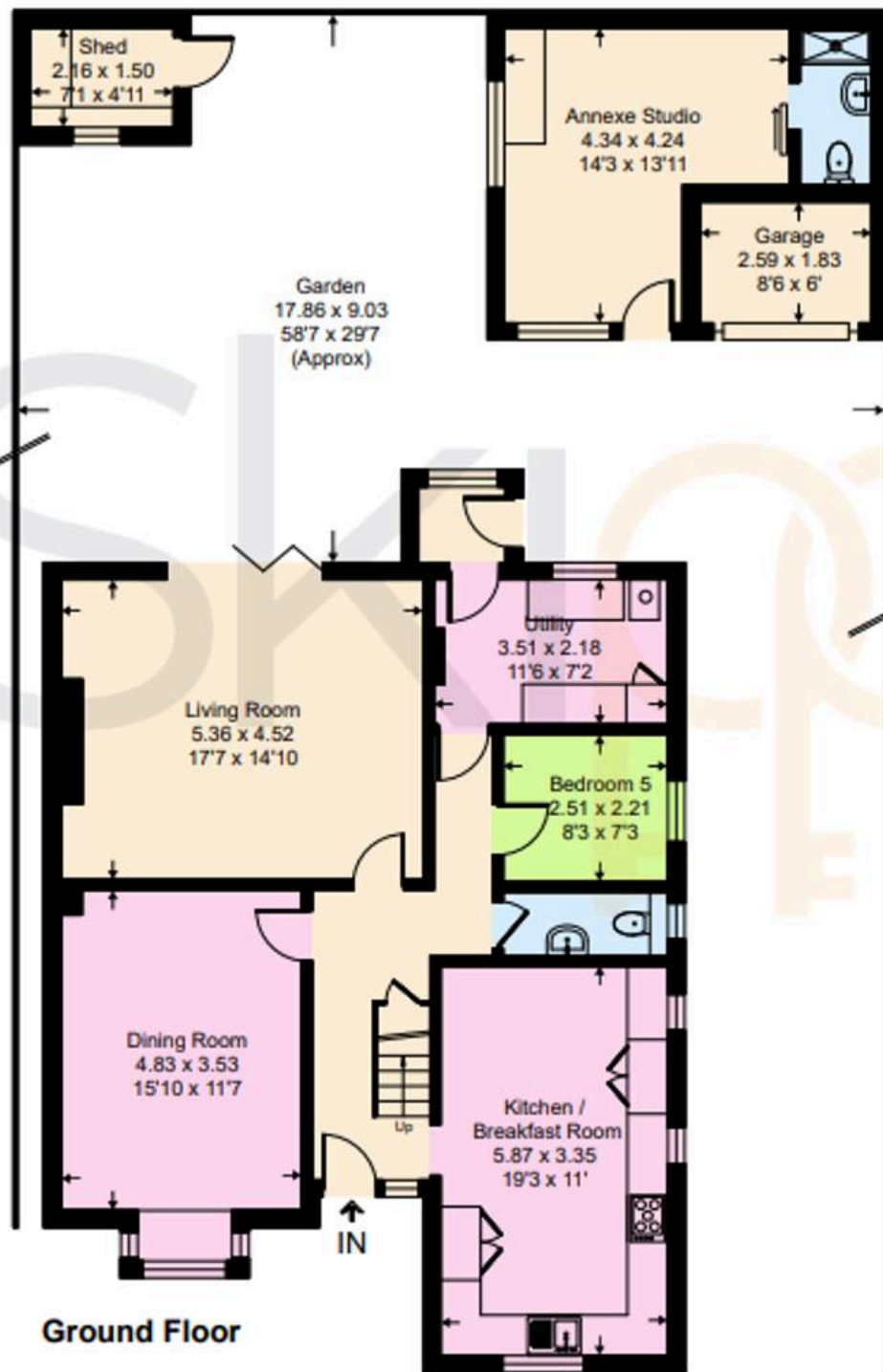
Low level wc, wash hand basin with mixer tap and vanity storage under, tiled shower cubicle.



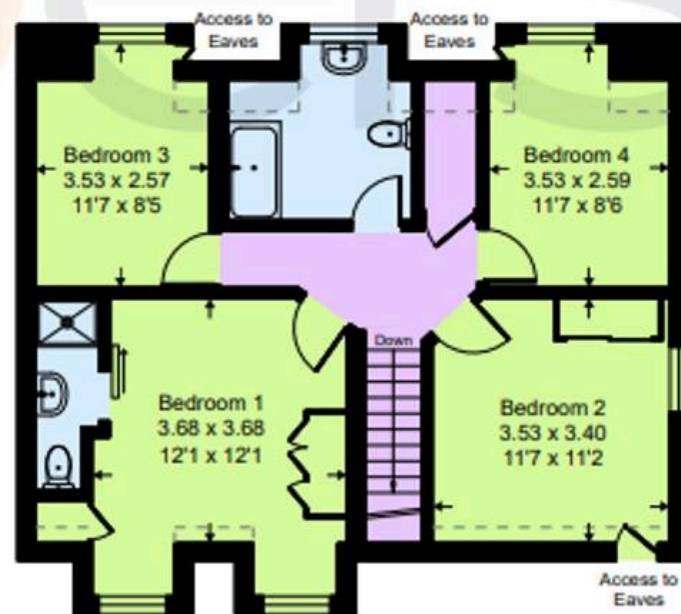








Ground Floor



First Floor



Skippers Estate Agents – Ashford

5 Kings Parade High Street, Ashford – TN24 8TA

01233 632383

ashford@skippers-ea.co.uk

skippers-ea.co.uk



