

**HS HAIR & SON**



## St. Johns Road , Westcliff-on-Sea SS0 7JZ

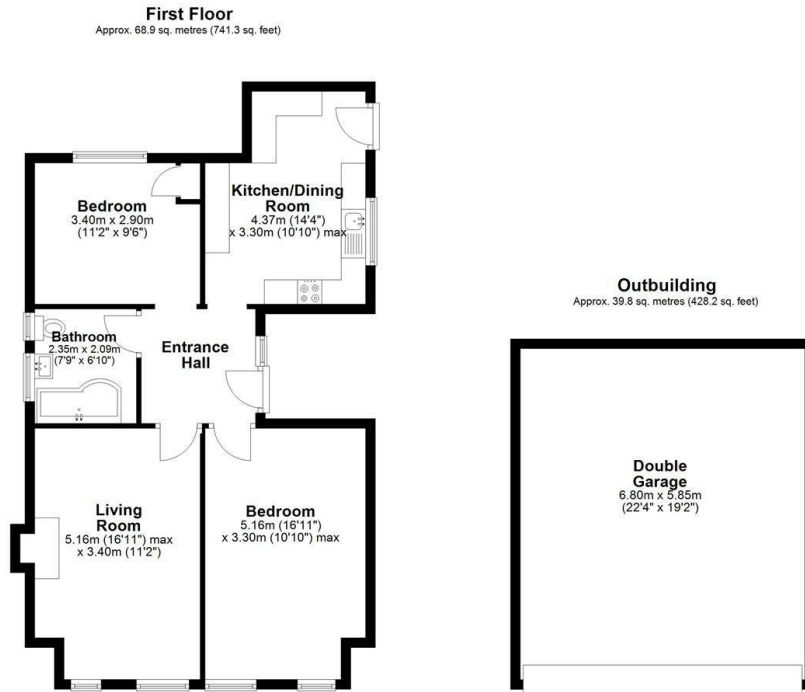
- FIRST FLOOR FLAT
- ENTIRE FREEHOLD
- REAR GARDEN
- WALKING DISTANCE TO WESTCLIFF TRAIN STATION AND HAMLET COURT ROAD
- TWO BEDROOMS
- DOUBLE WIDTH GARAGE
- NEW MODERN KITCHEN
- ART DECO STYLE BUILDING

**Guide Price £280,000 Freehold**

Local Authority **Southend on Sea Borough Council**

Council Tax Band **B**

EPC Rating



Total area: approx. 108.6 sq. metres (1169.5 sq. feet)

All measurements have been taken as a guide to prospective buyers only and are not precise. This plan is for illustrative purposes only and no responsibility for any error, omission or misstatement. The services, systems and appliances shown have not been tested and no guarantee as to their operability or efficiency can be given. Measurements may have been taken from the widest area and may include wardrobe/cupboard space. No guarantee is given to any measurements including total areas. Buyers are advised to take their own measurements.

© @modephotok | www.modephoto.co.uk  
Plan produced using PlanUp.

**St Johns Road**

### Sales Office

190 London Road, Southend-On-Sea,  
Essex, SS1 1PJ

### Contact

01702 34 11 77

<https://hairandson.co.uk/>

Agents Note: Whilst every care has been taken to prepare these particulars, they are for guidance purposes only. All measurements are approximate and for general guidance purposes only and whilst every care has been taken to ensure accuracy, they should not be relied upon and potential buyers/tenants are advised to recheck the measurements.

