



**Marlborough Road, Smethwick B66 4DW**

**welcome to**

## **Marlborough Road, Smethwick**

**\*\*\*NO ONWARD CHAIN\*\*\*TWO BEDROOMS\*\*\*TWO RECEPTION ROOMS\*\*\*WALKING DISTANCE TO LOCAL AMENITIES AND TRANSPORT LINKS\*\*\***

### **Agent Note**

This property is council tax band B.

### **Entrance Hall**

Front door into entrance hall, door to reception room & hall.

### **Reception Room**

15' 2" x 8' ( 4.62m x 2.44m )

Double glazed bay window to front, ceiling light connection, central heating radiator, small cupboards, coving to ceiling, carpet.

### **Hall**

Stairs to first floor, entrance to second reception room.

### **Reception Room**

11' 10" x 11' 6" ( 3.61m x 3.51m )

Double glazed window to rear, carpet, feature fire surround and inset fire, ceiling light connection, door to kitchen, archway to hall and door.

### **Kitchen**

12' 2" x 6' 11" ( 3.71m x 2.11m )

A beautifully presented kitchen with double glazed window to rear & door to garden, tiling to splash-prone areas, ceiling light connection, sink & drainer unit with mixer tap, space for free standing oven, cooker hood over, plumbing for washing machine, range of wall & base units with worktops over.

### **Landing**

doors to the two bedrooms and bathroom.

### **Bedroom 1**

13' 7" x 12' 6" ( 4.14m x 3.81m )

Double glazed window to front, ceiling light connection, carpet, built in cupboard.

### **Bedroom 2**

11' 11" x 10' 9" ( 3.63m x 3.28m )

Double glazed window to rear, ceiling light connection, carpet, built in cupboard.

### **Bathroom**

12' x 6' 11" ( 3.66m x 2.11m )

Double glazed frosted window to rear, built in cupboard, laminate flooring, low level flush w/c, wash hand basin with mixer tap, curved bath with glass screen & shower over, tiles to splash-prone areas, central heating radiator, ceiling light connection. Subject to permissions, this well-proportioned room could be converted for another use such as a bedroom.

### **Front Garden**

Small front garden, waist high wall surrounds, small step into garden, step up to front door, fully paved.

### **Rear Garden**

Patio area, step up to lawned area, path surrounds lawn area, fencing surrounds, brick built shed.

### **Parking**

No parking.





***view this property online*** [shipways.co.uk/Property/HBN112230](http://shipways.co.uk/Property/HBN112230)



welcome to

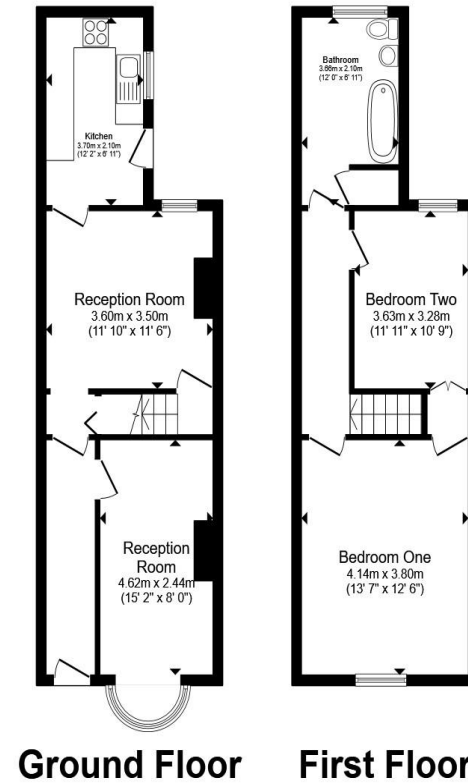
## Marlborough Road, Smethwick

- NO ONWARD CHAIN
- TWO BEDROOMS
- TWO RECEPTION ROOMS
- REAR GARDEN
- WALKING DISTANCE TO LOCAL AMENITIES

Tenure: Freehold EPC Rating: C

Council Tax Band: B

**£200,000**



Total floor area 82.7 m<sup>2</sup> (890 sq.ft.) approx

This floor plan is for illustrative purposes only. It is not drawn to scale. Any measurements, floor areas (including any total floor area), openings and orientation are approximate. No details are guaranteed, they cannot be relied upon for any purpose and they do not form part of any agreement. No liability is taken for any error, omission or misstatement. A party must rely upon its own inspection(s). Powered by [www.propertybox.io](http://www.propertybox.io)



view this property online [shipways.co.uk/Property/HBN112230](http://shipways.co.uk/Property/HBN112230)



Property Ref:  
HBN112230 - 0004

1. MONEY LAUNDERING REGULATIONS Intending purchasers will be asked to produce identification documentation at a later stage and we would ask for your co-operation in order that there is no delay in agreeing the sale. 2. These particulars do not constitute part or all of an offer or contract. 3. The measurements indicated are supplied for guidance only and as such must be considered incorrect. Potential buyers are advised to recheck measurements before committing to any expense. 4. We have not tested any apparatus, equipment, fixtures or services and it is in the buyers interest to check the working condition of any appliances. 5. Where an EPC, or a Home Report (Scotland only) is held for this property, it is available for inspection at the branch by appointment. If you require a printed version of a Home Report, you will need to pay a reasonable production charge reflecting printing and other costs. 6. We are not able to offer an opinion either written or verbal on the content of these reports and this must be obtained from your legal representative. 7. Whilst we take care in preparing these reports, a buyer should ensure that his/her legal representative confirms as soon as possible all matters relating to title including the extent and boundaries of the property and other important matters before exchange of contracts.

Shipways is a trading name of Sequence (UK) Limited which is registered in England and Wales under company number 4268443, Registered Office is Cumbria House, 16-20 Hockliffe Street, Leighton Buzzard, Bedfordshire, LU7 1GN. VAT Registration Number is 500 2481 05.



**0121 427 3264**



[harborne@shipways.co.uk](mailto:harborne@shipways.co.uk)



172 High Street, Harborne, BIRMINGHAM,  
West Midlands, B17 9PP



[shipways.co.uk](http://shipways.co.uk)