



**Hervey Road, SE3**

£400,000

**Dexters**



## Hervey Road, SE3

This beautifully presented split-level two bedroom apartment offers well-balanced living space arranged over two floors, finished in lovely condition throughout. The first floor comprises two generous double bedrooms, both offering excellent proportions and natural light. The upper floor provides a bright and spacious separate reception room, ideal for relaxing or entertaining, along with a well-appointed kitchen/dining room with ample space for dining and everyday living. This level also benefits from a convenient separate WC.

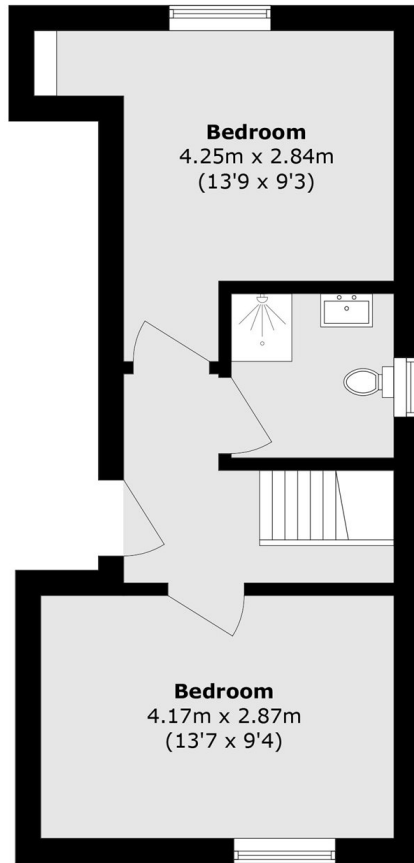
Hervey Road is conveniently located for the various independent shops, cafés and Marks & Spencer Food Hall at Blackheath Standard. A stroll across the heath will bring you to Blackheath Village with its array of shops, bars and restaurants and Blackheath Station which provides regular services to London Bridge, Cannon Street and Charing Cross.

### Features

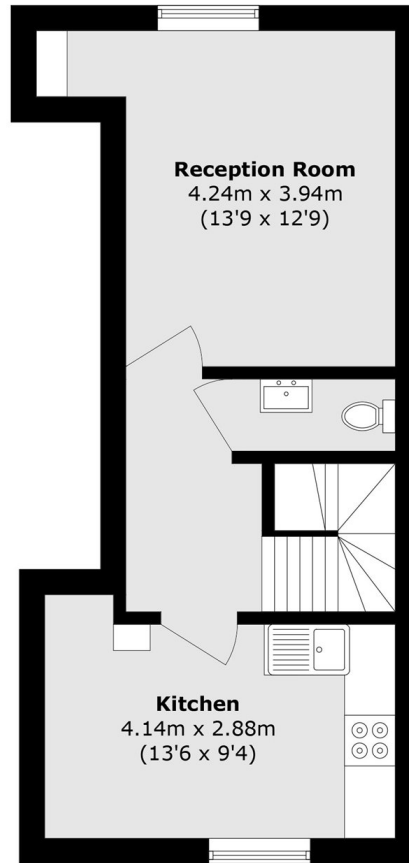
- Two Bedroom Conversion
- Immaculate Condition
- Split Level
- Victorian Conversion
- No Onward Chain
- Communal Garden



# Hervey Road, LONDON, SE3



**Ground Floor**



**First Floor**

Total area (approx.): 68.1 sq. m (733.0 sq. ft)