



North Road

Offers in the region of £190,000

- Two Bedrooms
- Front and Rear Garden
- Spacious Reception Room
- Modern Kitchen and Bathroom
- Downstairs Wc
- Close Proximity to Cwmbran Town Centre
- Excellent Location Close to Schools, Shops and Leisure Facilities
- Excellent Transport Links
- EPC Rating: D



 2  1  1

Pinkmove

01633 746088
team@pinkmove.co.uk



Pinkmove

About the property

This attractive two-bedroom mid-terrace home on North Road, Cwmbran, offers spacious living, modern conveniences and easy access to the town's extensive amenities.

The ground floor presents a generous open-plan reception room, large enough to serve as a comfortable lounge and dining area, with sliding doors opening onto the enclosed rear garden. The L-shaped kitchen provides excellent storage and worktop space, while a handy downstairs WC adds everyday practicality. At the rear, a separate storage room offers ideal space for garden equipment or a compact workshop.

Upstairs, the property features two double bedrooms and a modern family bathroom fitted with both a bath and shower. Outside, the home benefits from a low-maintenance front patio garden and a rear garden combining patio and lawn—perfect for relaxing or entertaining.

The location is a major highlight, with Cwmbran Centre nearby offering a wide range of shops, cafés and restaurants for daily needs and leisure. The wider surrounding area includes numerous high-street retailers and supermarkets, giving residents ample choice for shopping and services.

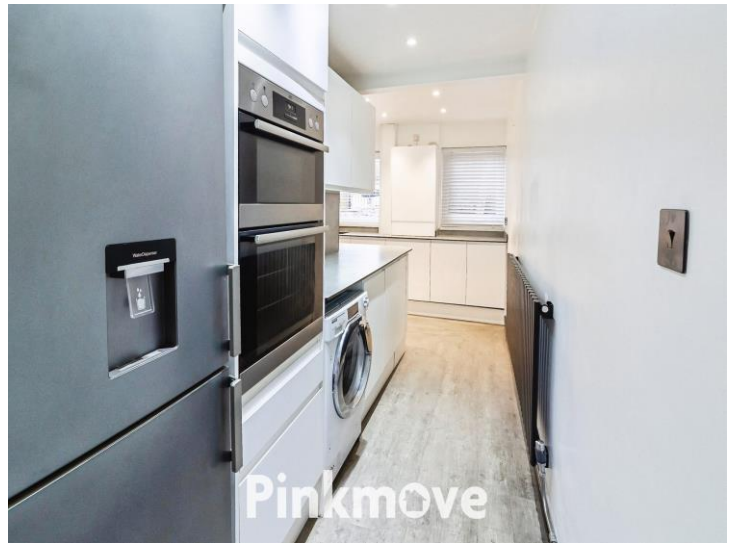
Families will also find a strong selection of schools and community facilities within the town, Cwmbran's thoughtfully planned layout ensures excellent transport links, including convenient road access, bus services and the nearby railway station for commuters travelling to Newport, Cardiff and beyond.



Pinkmove



Pinkmove



Accommodation

Reception Room

16' 6" x 16' 6" (5.03m x 5.03m)

Kitchen

15' 9" x 14' 5" (4.80m x 4.39m)

Max Measurements

Storage Room

6' 1" x 6' 10" (1.85m x 2.08m)

Bedroom 1

16' 5" x 10' 7" (5.00m x 3.23m)

Max Measurements

Bedroom 2

10' 2" x 11' 7" (3.10m x 3.53m)

Max Measurements

Bathroom

7' 11" x 7' 8" (2.41m x 2.34m)

01633 746088

team@pinkmove.co.uk

Pinkmove

Floorplan

Ground Floor

Approx. 54.3 sq. metres (584.9 sq. feet)



First Floor

Approx. 35.6 sq. metres (382.7 sq. feet)



Total area: approx. 89.9 sq. metres (967.5 sq. feet)

Important Information

Note while we endeavour to make our sales details accurate and reliable, if there is any point which is of particular interest to you, please contact the office and we will be pleased to confirm the position for you. We have not personally tested any apparatus, equipment, fixtures, fittings or services and cannot verify they are in working order or fit for their purposes. Nothing in these particulars is intended to indicate that carpets or curtains, furnishings or fittings, electrical goods (whether wired or not). Gas fires or light fittings or any other fixtures not expressly included form part of the property offered for sale. This computer generated Floorplan, if applicable, is intended as a general guide to the layout and design of the property. It is not to scale and should not be relied upon for dimensions. Tenure: We cannot confirm the tenure of the property as we have not had access to the legal documents. The buyer is advised to obtain verification from their solicitor or surveyor.

Peter Alan Limited is registered in England and Wales under company number 2073153, Registered Office is Cumbria House, 16-20 Hockliffe Street, Leighton Buzzard, Bedfordshire, LU7 1GN. VAT Registration Number is 500 2481 05. For activities relating to regulated mortgages and non-investment insurance contracts, Peter Alan Limited is an appointed representative of Connells Limited which is authorised and regulated by the Financial Conduct Authority. Connells Limited's Financial Services Register number is 302221. Most buy-to-let

