



## Kempsford Gardens, SW5

£576 Per week

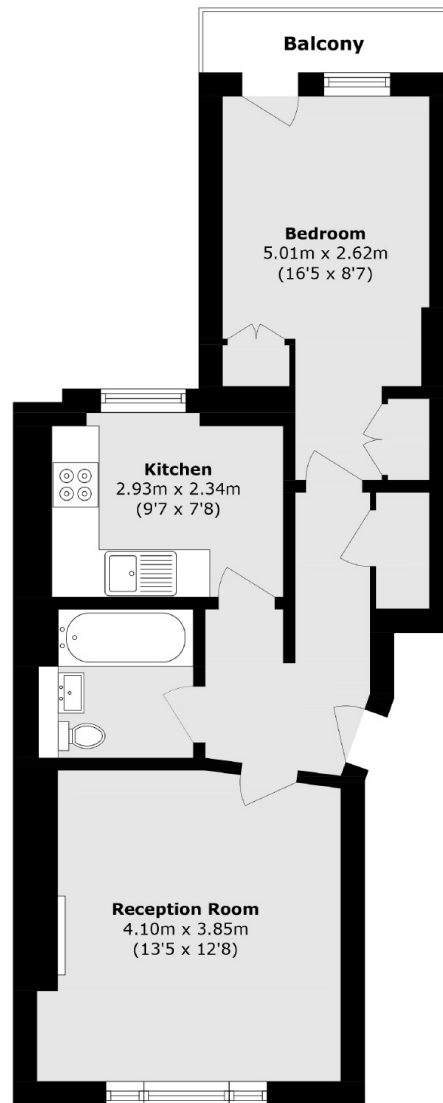
A well-presented one bedroom flat located on the raised ground floor with its own private balcony. The flat benefits from high ceilings and wooden flooring throughout.

Kempsford Gardens is well situated moments from the amenities of Old Brompton Road and Earls Court and within easy reach of the shops, bars and restaurants of Kensington High Street. Earls Court tube is located 0.1 miles away.

### Features

- One Bedroom
- One Bathroom
- High Ceilings
- Separate Kitchen
- Wooden Floors
- Private Balcony

# Kempsford Gardens, London, SW5



Total area (approx.): 46.3 sq. m (498.3 sq. ft)

Balcony area (approx.): 2.3 sq. m (24.7 sq. ft)

## Dexters

Earl's Court  
3 Hogarth Place  
London  
SW5 0QT  
Lettings  
020 7370 3030

Energy Rating: C. We aim to make our particulars both accurate and reliable. However they are not guaranteed; nor do they form part of an offer or contract. If you require clarification on any points then please contact us, especially if you're traveling some distance to view. Please note that appliances and heating systems have not been tested and therefore no warranties can be given as to their good working order.

 **RICS** | Regulated  
Estate Agent  
and Letting Agent

[dexters.co.uk](https://www.dexters.co.uk)