



## ATRIA HOUSE, SL1

£1,250 pcm

This spacious property benefits from a generous helping of natural light from the large windows and clever open plan. Looking outside you will enjoy a view of the development's quaint communal garden, equally as pleasing to the eyes as the ears. This fully furnished luxury apartment will come fitted with Galliard home's premier luxury specifications;

- Slough Station
- Local Amenities
- Open Plan
- Fully Furnished
- Allocated Parking
- EPC Rating E

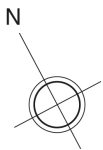
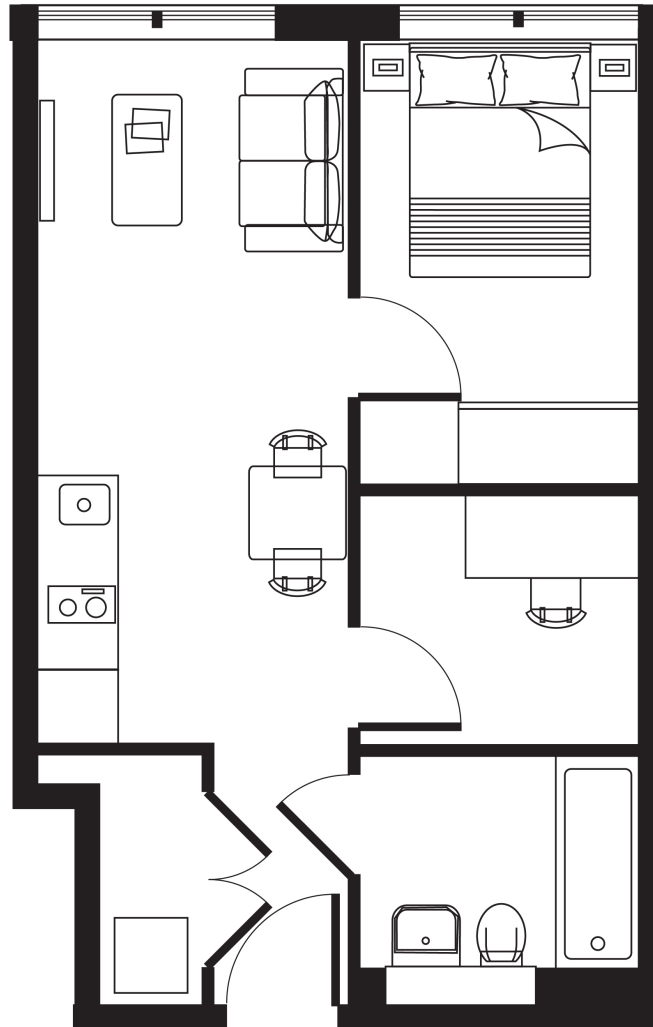


## ABOUT THE HOME

Atria House is located on Bath Road, opposite Slough Industrial estate, allowing easy access to central London and perfect for commuters as well as those working in Slough.







Approx area: 38.4 sq m 413 sq f

**LiFE RESIDENTIAL**

203 Trentham Court, Victoria  
Road, London, W3 6BT  
Sales: 020 3668 1112  
Lettings: 020 3668 1111

Energy Rating: E. We aim to make our particulars both accurate and reliable. However they are not guaranteed; nor do they form part of an offer or contract. If you require clarification on any points then please contact us, especially if you're traveling some distance to view. Please note that appliances and heating systems have not been tested and therefore no warranties can be given as to their good working order.