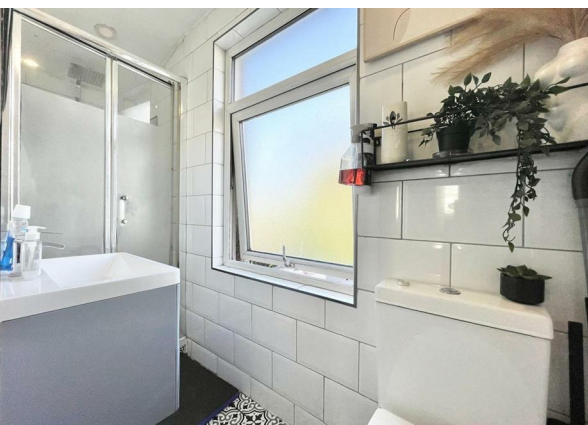
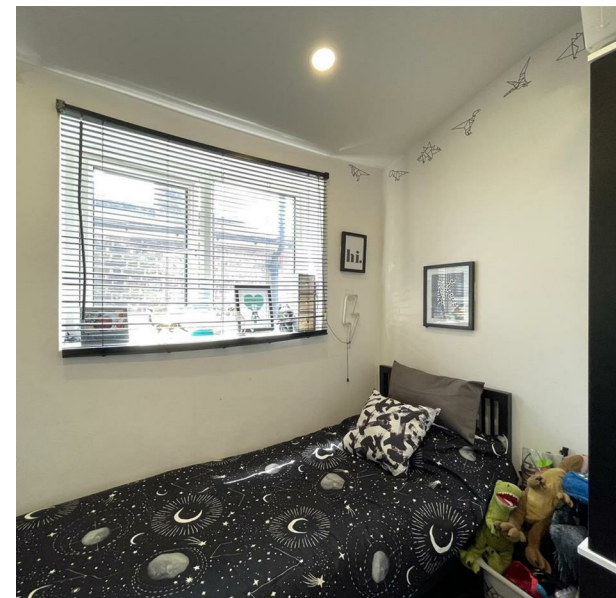


93B Norman Road, Leytonstone, London, United Kingdom, E11 4RJ
Guide Price £285,000

COMPLETION
SALES & LETTINGS



93B Norman Road, Leytonstone, London, United Kingdom, E11 4RJ

Guide Price £285,000

Council Tax Band:

VICTORIAN CONVERSION | FIRST FLOOR FLAT | TWO BEDROOMS | 900+ LEASE | CHAIN FREE | CLOSE TO WESTFIELD | GUIDE PRICE £325,000.00

Looking for a Victorian Conversion First Floor Flat? This well maintained Two Bedroom flat situated in a popular residential enclave of Leytonstone is an ideal purchase for first time buyers or for Rental Investors. The property benefits from spacious lounge with open plan kitchen, a good size master bedroom, a further single room and a modern shower room. The property benefits from Gas Central Heating and Double-Glazed windows.

The property is at a short journey to famous London landmarks such as Westfield Shopping Centre and Queen Elizabeth (Olympic) Park. The Central Line Stations such as Stratford, Leyton and Leytonstone are all within close proximity.

The property has long lease 900 plus years of lease making it a virtually freehold in theory and is sold chain free. Please call completion on 02085277007 to arrange an appointment.



337 Forest Road

London

E17 5JR

02085277007

enquiries@completion.co.uk

completion.co.uk



Total area: approx. 42.7 sq. metres (460.0 sq. feet)

Energy Efficiency Rating		
	Current	Potential
Very energy efficient - lower running costs		
(92 plus) A		
(81-91) B		
(69-80) C		79
(55-68) D	65	
(39-54) E		
(21-38) F		
(1-20) G		
Not energy efficient - higher running costs		
England & Wales	EU Directive 2002/91/EC	