



## Alvey Street, SE17

£549,950

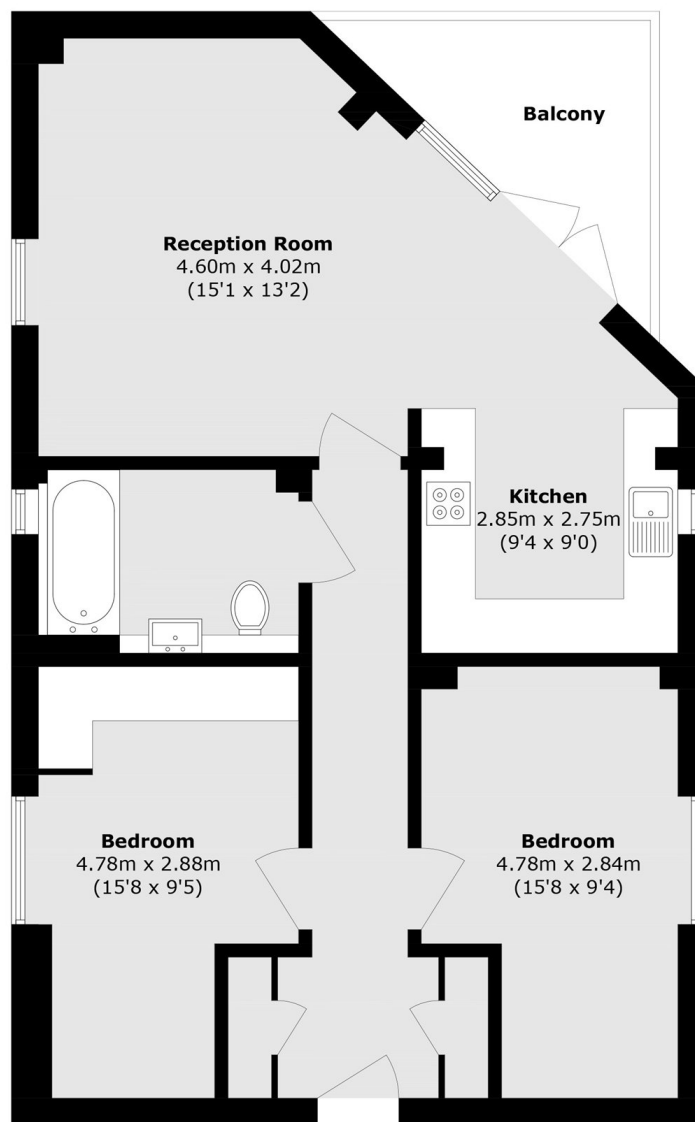
A beautifully presented top-floor, two double bedroom modern apartment, offered in excellent condition throughout. This high-quality home is flooded with natural light and features a generously proportioned reception room that comfortably accommodates both living and dining areas. The stylish kitchen offers exceptional space for those who love to cook, creating a fantastic setting for entertaining. The apartment is the only apartment positioned on the top floor and further benefits include a long 141 year lease, a right to manage, good storage throughout, a contemporary bathroom, and access to a large private balcony.

Maple Court is a low rise, modern building quietly located within easy reach of Elephant & Castle. Great for the busy commuter there are many bus services close providing exceptional access to the city. There a selection of local shop's close by as are the green spaces of Burgess Park.

### Features

- Two Double Bedrooms
- Balcony
- Excellent Condition
- Lift
- Quiet/Convenient Location
- Bright and Spacious

# Alvey Street, London, SE17



## Fourth Floor

Total area (approx.): 75.5 sq. m ( 812.6 sq. ft)

Balcony area (approx.): 6.6 sq. m (71.0 sq. ft)