



jordan fishwick

Knutsford Road

£1,950 PCM



Knutsford Road, Alderley Edge, SK9 7SF

£1,950 PCM

VIEWING ESSENTIAL TO APPRECIATE

This beautiful and immaculately presented three storey townhouse style home forms part of a select development which is within convenient reach of Alderley Edge and Wilmslow village.

AVAILABLE NOW PART FURNISHED

Internally the property has been updated and modernised throughout to create an immaculate finish. The accommodation in brief comprises beautifully presented living room, downstairs W.C. and a contemporary kitchen/diner.

The first-floor accommodation comprises: stairs/landing, great size master bedroom with fitted wardrobes and a white three-piece bathroom suite.

The second floor accommodation comprises: two further good size bedrooms and en-suite shower room.

To the rear of this wonderful home the property boasts a well-presented low maintenance enclosed garden and off-road parking beyond.

Contact Wilmslow 01625 536300 £1950.00pcm

COUNCIL TAX E

EPC C

LOCATION

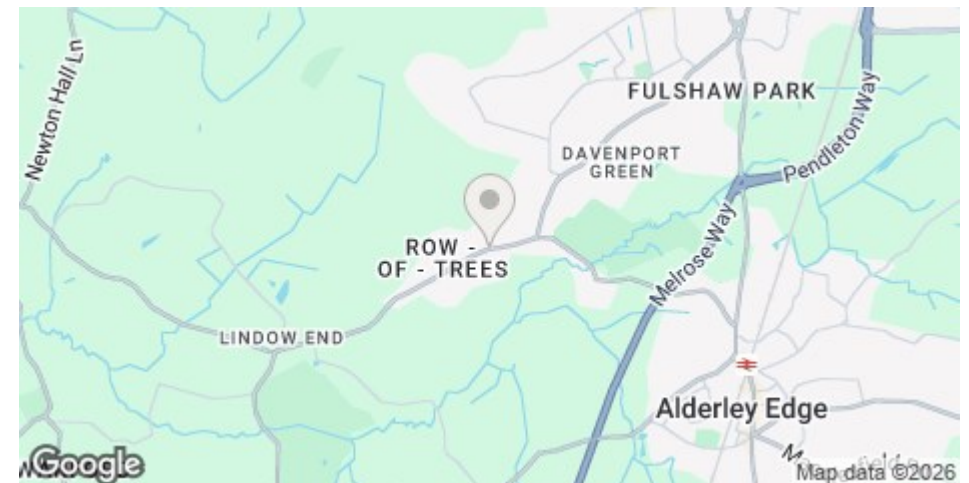
Jordan Fishwick Estate and Letting Agents Wilmslow office is located in a prime position central to the bustling and stylish town centre. With our impressive frontage it's impossible to miss our attractive office.

With busy sales and lettings departments all under the same roof along with our independent mortgage advisor on hand the Wilmslow branch has everything you need to help with your sales or lettings transactions.

Knowledgeable and friendly staff also compliment the range of services we offer and we are known throughout the Wilmslow area for our proactive approach in helping people find their dream home

DIRECTIONS

Proceed out of Wilmslow along Knutsford Road and Broadacre Place can be found on the right hand side after a short distance



- TOWN HOUSE
- THREE BEDROOMS
- OFF ROAD PARKING
- COURTYARD GARDEN
- IMMACULATE THROUGHOUT
- COUNCIL TAX E
- EPC C

Postcode - SK9 7SF

EPC Rating - C

Floor Area - sq ft

Local Authority - Cheshire East Council

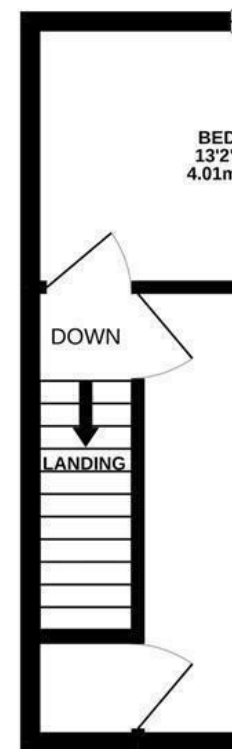
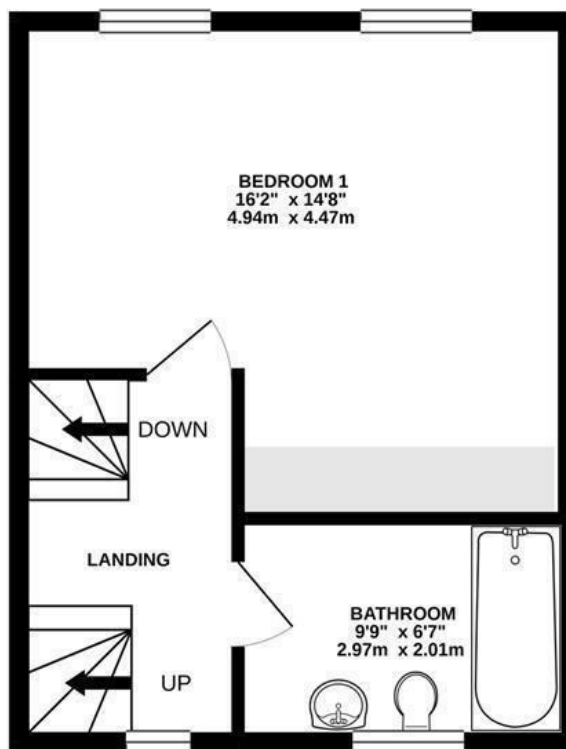
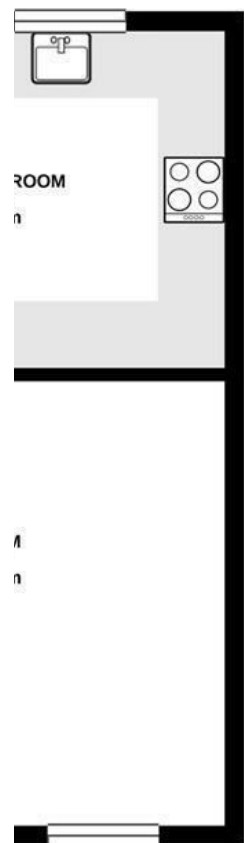
Council Tax - E



FOR
approx.

1ST FLOOR
344 sq.ft. (32.0 sq.m.) approx.

2
344 sq.ft.



TOTAL FLOOR AREA : 1055 sq.ft. (98.0 sq.m.) approx.

Whilst every attempt has been made to ensure the accuracy of the floorplan contained here, measurements of doors, windows, rooms and any other items are approximate and no responsibility is taken for any error, omission or mis-statement. This plan is for illustrative purposes only and should be used as such by any prospective purchaser. The services, systems and appliances shown have not been tested and no guarantee as to their operability or efficiency can be given.

Made with Metropix ©2021



These particulars are believed to be accurate but they are not guaranteed and do not form a contract. Neither Jordan Fishwick nor the vendor or lessor accept any responsibility in respect of these particulars, which are not intended to be statements or representations of fact and any intending purchaser or lessee must satisfy himself by inspection or otherwise as to the correctness of each of the statements contained in these particulars. Any floorplans on this brochure are for illustrative purposes only and are not necessarily to scale.

Offices at: Offices at Chorlton, Didsbury, Disley, Hale, Glossop, Macclesfield, Manchester Deansgate, Manchester Whitworth Street, New Mills, Sale, Wilmslow and Withington

01625 536300