



Mozart Street, W10

£800,000

Dexters



Mozart Street, W10

A newly developed house with three rooms, offering a modern open-plan kitchen/reception room with direct access to a private garden. Finished to a high standard throughout, the property is presented in excellent condition and benefits from bright, well-proportioned living space.

As you enter the house, you are welcomed into a stylish open-plan kitchen and reception room featuring pendant lighting above the island, incredible high ceilings, an exposed brick feature wall, and direct access to a private patio garden.

The lower ground floor comprises a principle bedroom and two further rooms each benefiting from its own en-suite bathroom.

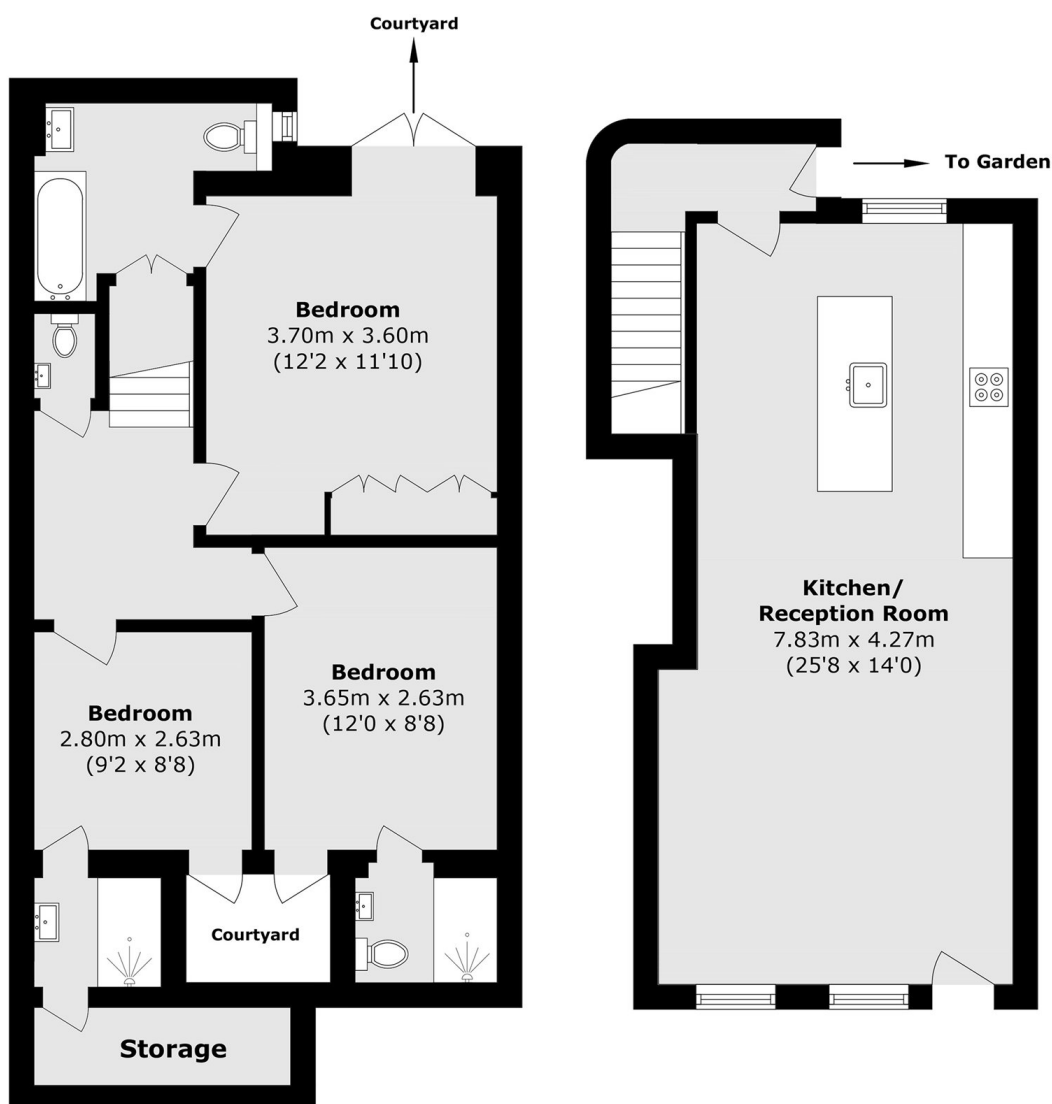
Mozart Street is within a short distance from Chamberlayne Road and Salusbury Road with the open green spaces of Queen's Park nearby. In addition, the vibrant amenities of Portobello Road and Notting Hill are also nearby.

Features

- One Bedroom
- Additional Two Rooms
- Three Bathrooms
- Excellent Condition
- Close to Portobello
- Chain Free



Mozart Street, London, W10



Lower Ground Floor

Ground Floor

Total area (approx.): 98.8 sq. m (1063.4 sq. ft)