
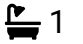





Property Webb  
At the HEART of your move

## Young Crescent, Bathgate, EH48 2SL

Offers Over £120,000

 1  1  1



Immaculately presented 1 double bedroom ground floor main door flat set on a generous plot with driveway, garage and versatile summer house. Offering stylish interiors, spacious lounge, modern kitchen, contemporary bathroom and a large sunny rear garden, this move-in ready home is ideal for first-time buyers, downsizers or investors.

 01506 637553

 [info@property-webb.co.uk](mailto:info@property-webb.co.uk)

 [www.property-webb.co.uk](http://www.property-webb.co.uk)

 71 South Bridge St, Bathgate, EH48 1TJ

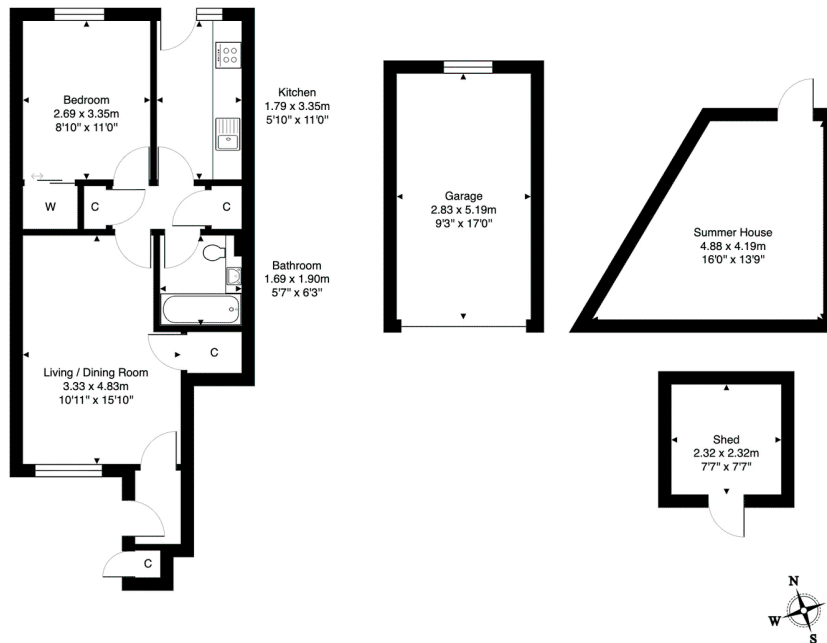


Property Webb  
At the HEART of your move

## Key Features

- Main door ground floor flat
- Walking distance to town centre
- Modern kitchen
- Contemporary bathroom
- Summer house
- Immaculately presented
- Spacious lounge/dining room
- Double bedroom with fitted wardrobes
- Large fully enclosed garden
- Driveway & visitors parking

18 Young Crescent, Bathgate, EH48 2SL



Total Area: 42.8 m<sup>2</sup> ... 460 ft<sup>2</sup> (excluding summer house, shed, garage)

All measurements are approximate and for display purposes only.

01506 637553

info@property-webb.co.uk

www.property-webb.co.uk



71 South Bridge St, Bathgate, EH48 1TJ