



169 Midland Road  
NN8 1NF



**Simpson & Weekley**

Located on Midland Road, this impressive fully renovated house offers a delightful room to rent, perfect for those seeking comfort and convenience. The property features a well-appointed bedroom and a modern bathroom, making it an ideal space for individuals or couples.

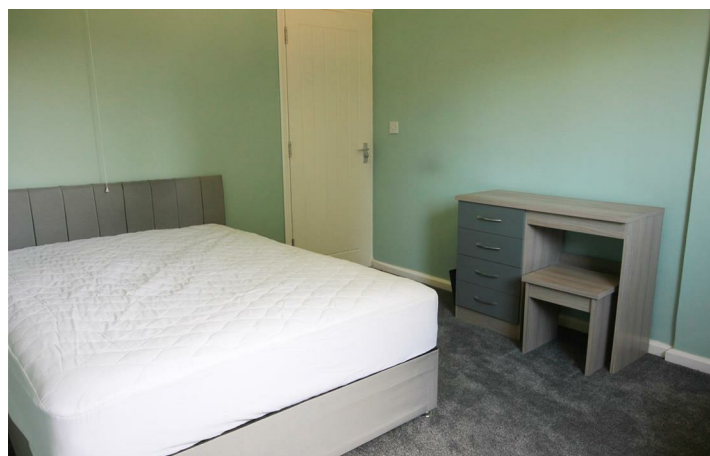
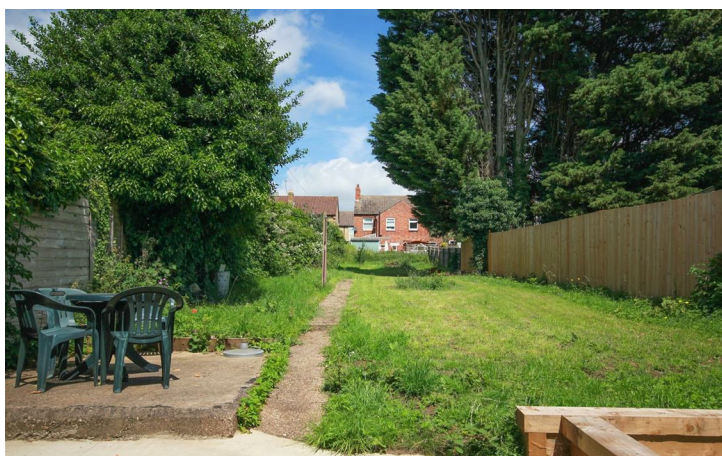
The room comes furnished, ensuring that you can settle in with ease. The heart of the home is the fully equipped kitchen and diner, which provides a welcoming area for cooking and socialising. Whether you are preparing a meal or enjoying a cup of tea, this space is designed for both functionality and comfort.

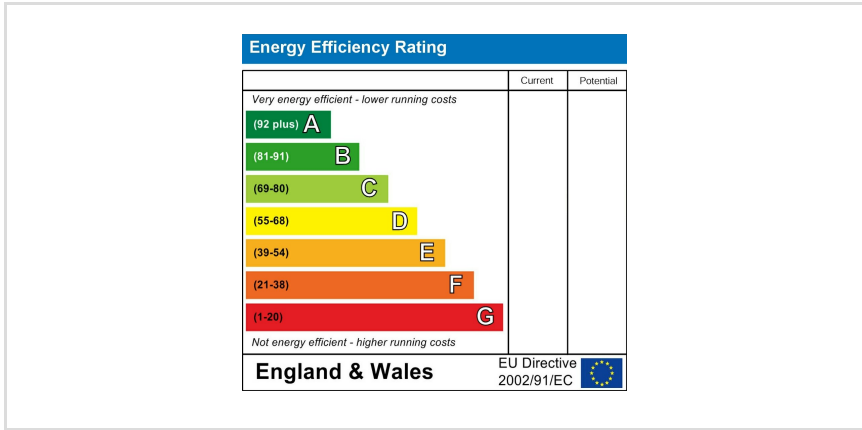
One of the standout features of this property is the remarkable 240-foot-long private garden, accessible via a night-time sensor-lit alleyway. This expansive outdoor area offers a tranquil retreat, perfect for relaxing or entertaining guests.

Additionally, the property includes parking for one vehicle, adding to the convenience of living in this lovely home. With its blend of modern amenities and charming outdoor space, this room to rent on Midland Road is an excellent opportunity for anyone looking to enjoy a comfortable lifestyle in a beautifully renovated setting.



£590 Per Month





When you buy with Simpson and Weekley, you know **you'll be in safe hands**. From the moment you walk through our doors, we'll make you **feel truly welcome**. Our sales consultants and financial advisors will take you through **every step of the process**, offering **free expert advice** along the way, from help choosing the right mortgage and insurance through to finding your conveyancer. And if you need help selling your home too, **with over 20 years of local experience, you can trust us to get you moving**.



**Simpson  
& Weekley**

Making Every  
Journey Personal



01933 224953

[wb@simpsonandweekley.co.uk](mailto:wb@simpsonandweekley.co.uk)

<https://www.simpsonandweekley.co.uk/>

33 Sheep Street, Wellingborough, Northants, NN8 1BS