



Church Road, TW10

£6,250 Per calendar month

In a superb location on the edge of Richmond Park is this incredible five bedroom house secluded within its own grounds, located opposite Ham Common and close to the River Thames.

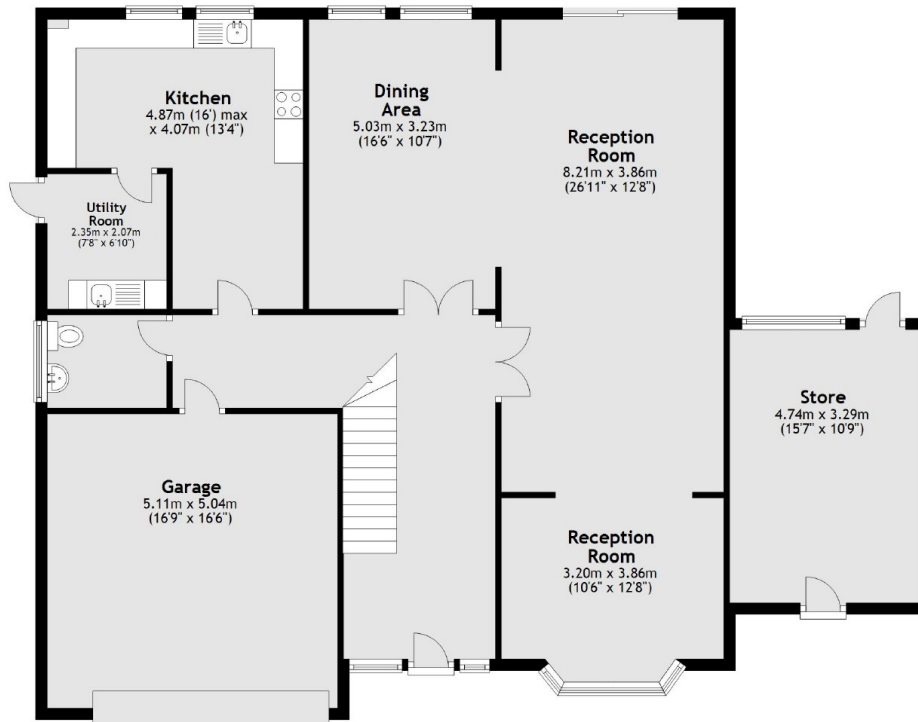
Ham is a sought after location between Richmond and Kingston. Both Richmond Park and the River Thames are close by perfect for young families and those with an interest in the outdoors.

Features

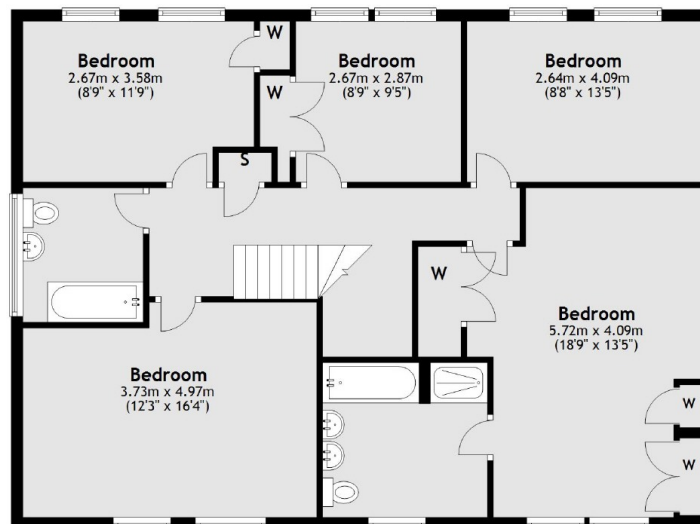
- Five Bedrooms
- Two Bathrooms
- Modern Eat-in Kitchen
- Landscape Garden
- River Thames
- Ham Common

Church Road, Richmond, TW10

Ground Floor



First Floor



Main area: Approx. 206.9 sq. metres (2226.5 sq. feet)
Plus garages, approx. 25.8 sq. metres (277.3 sq. feet)
Plus outbuildings, approx. 15.6 sq. metres (167.9 sq. feet)