



2

Warwick Road | Kensington & Chelsea | London | SW5 9UL

£2,000 Per month

ESON2
REAL ESTATE

Key features

- Newly refurbished
- Open-plan living, dining and kitchen
- Integrated storage and appliances
- Fully furnished to a high specification
- Shower room with rainfall shower
- Lower ground floor period conversion
- Earl's Court, SW5

Description

A beautifully refurbished lower ground floor studio apartment, forming part of an impressive period conversion on Warwick Road, SW5. Thoughtfully designed and finished to an exceptional standard, the studio delivers a striking open-plan living, dining and kitchen space that feels far larger than its footprint suggests.

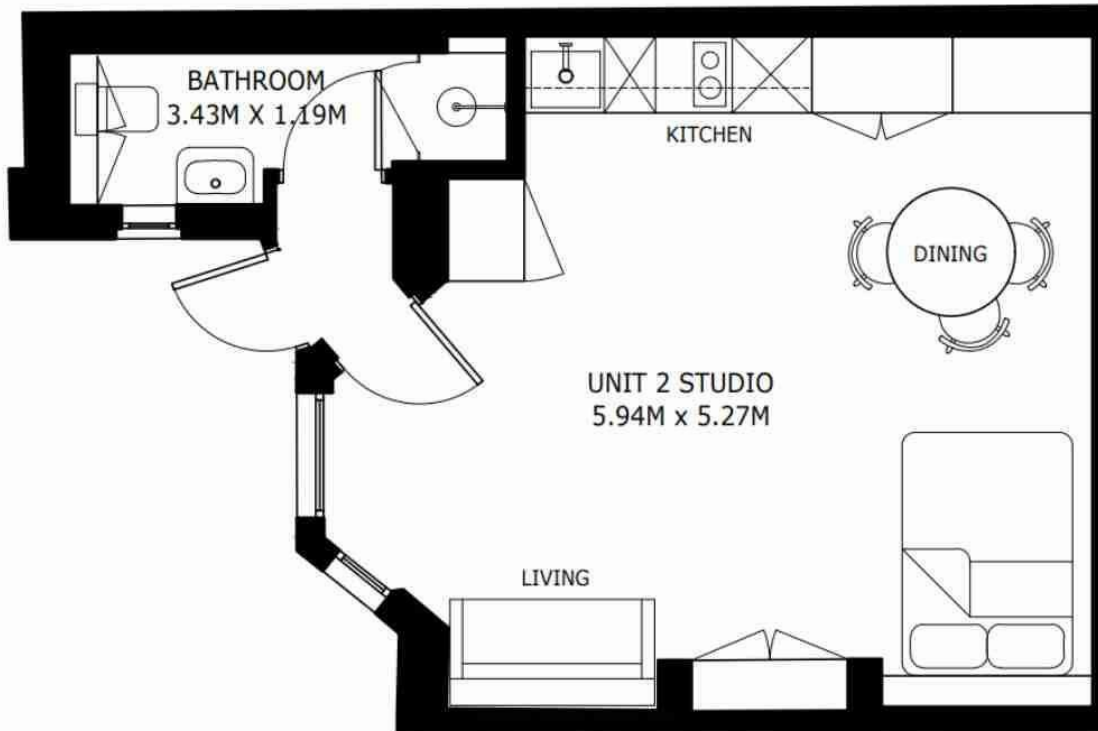
Every detail has been carefully considered, from the fully integrated kitchen to the furnishings, creating a home that is effortlessly refined and completely move-in ready. The beautifully appointed shower room is a standout feature, with dramatic dark statement tiling and a rainfall shower offering a luxurious finishing touch.


Directions





Floor plans



Energy Efficiency Rating		
	Current	Potential
<i>Very energy efficient - lower running costs</i>		
(92 plus) A		
(81-91) B		
(69-80) C	72	75
(55-68) D		
(39-54) E		
(21-38) F		
(1-20) G		
<i>Not energy efficient - higher running costs</i>		
England & Wales	EU Directive 2002/91/EC 	

Council Tax Band C EPC Rating C



301 Michelin House 81 Fulham road
 London
 Greater London
 SW3 6RD
 07920 257649
 fayeel@eson2.co.uk
 www.eson2.co.uk