



SUNNY GARDENS ROAD

Hendon
London NW4



Four Double Bedrooms
EPC Rating: C

Price £950,000

An impressive family home situated on the desirable Sunny Gardens Road, offering a spacious, modern interior with high ceilings, lots of natural light, generous living spaces, a large garden, and a private driveway.



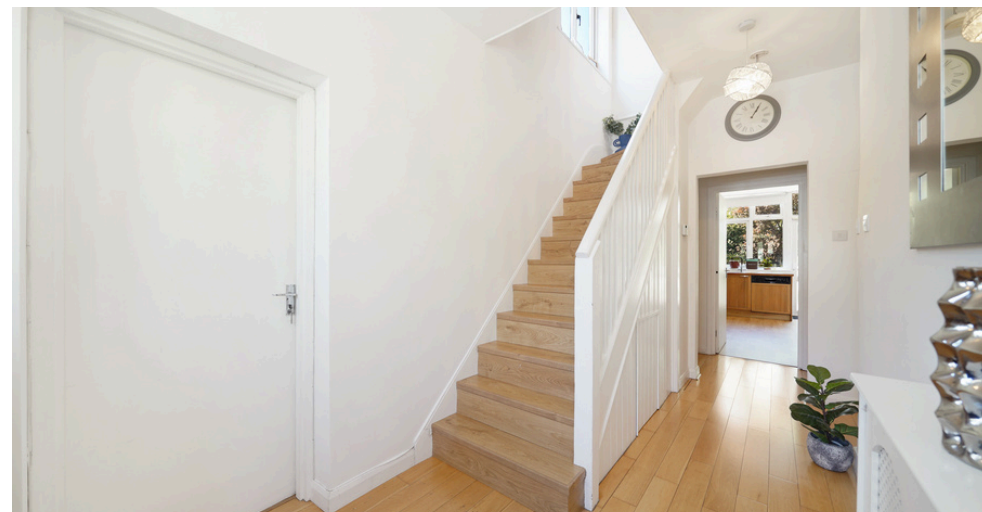
This beautifully maintained property includes a fully fitted kitchen, stylish bathrooms, an additional downstairs toilet, utility room, Study and ample storage throughout, ideal for family living.

The location is great, with excellent transport links, including Hendon Central Tube Station and Hendon Thameslink station, which are a walk away.

The rear garden opens into the picturesque Sunny Hill Park, and the house is within easy reach of top-rated schools, local shops, Barnet Copthall Leisure Centre and the RAF museum, making it the perfect home for families with children.



- Four Double Bedrooms
- Two Bathrooms (One Ensuite)
- Large Double Reception
- Fully fitted Kitchen/ Breakfast
- Ground Floor Cloakroom
- Over 100 ft Rear Garden
- Driving Parking for Numerous Cars
- Office/Study
- Stunning views over Sunny Hill Park
- Sole Agent

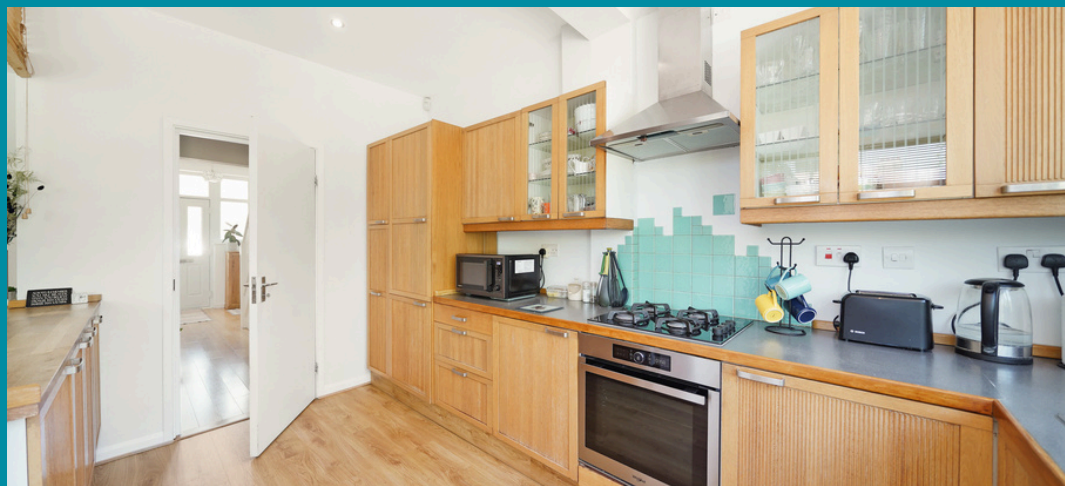
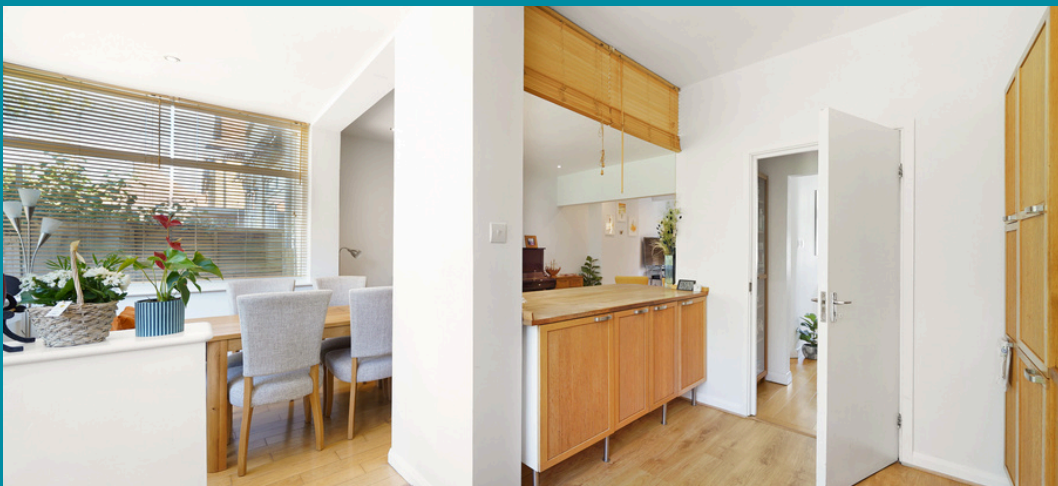




Hendon

Hendon is a cosmopolitan, multicultural area that benefits from a relaxed pace of life and a wide range of attractive amenities. Hendon's transport connections are excellent, with the M1 nearby and easy access to central London along the Northern Line. Thanks to its diverse population, Hendon has some of the best restaurants in north London, while its popularity with families ensures there is a good selection of schools.

While Hendon property prices have done well over the last few years, the area still represents a good-value option for renting or buying when compared against other parts of London.

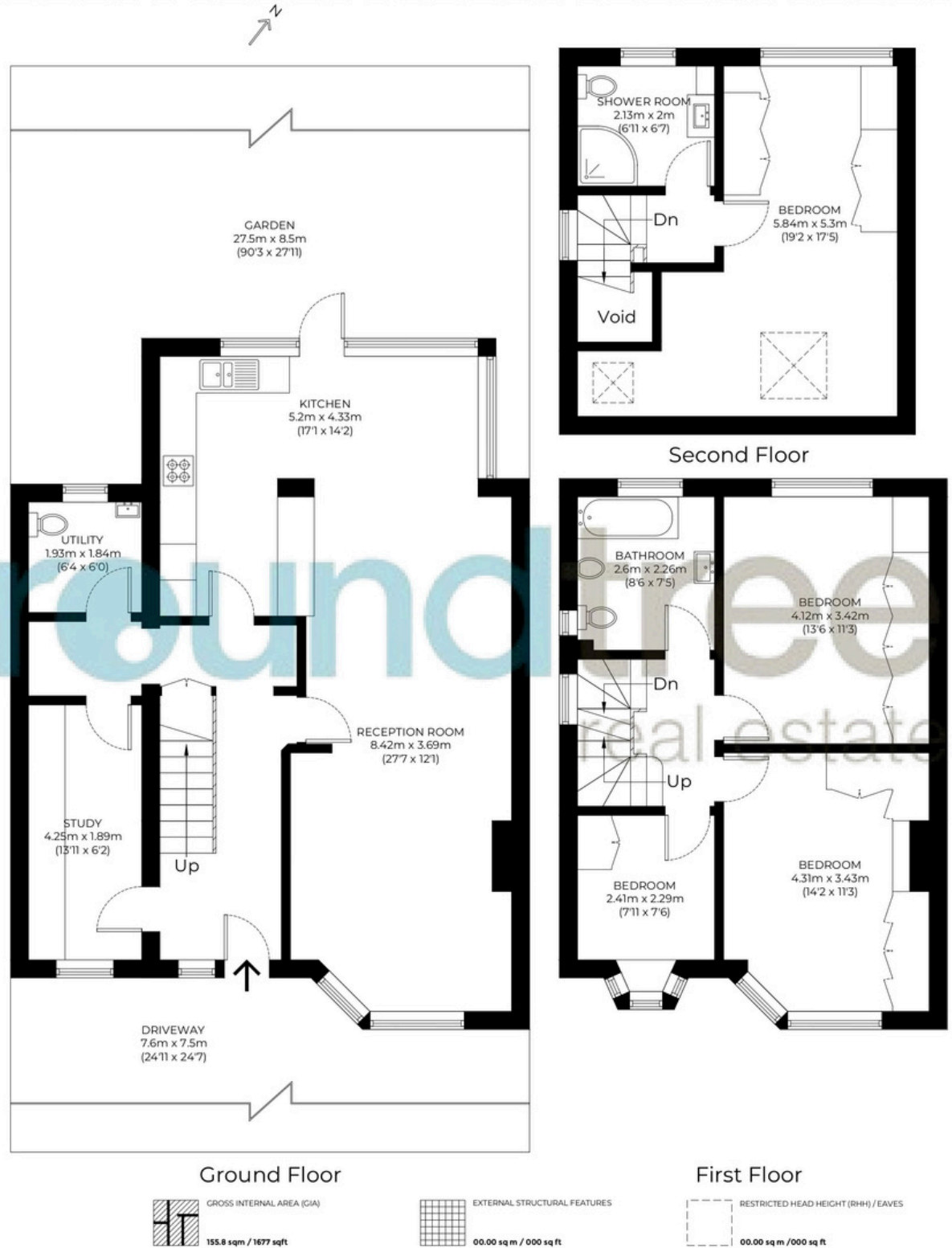


Floorplan

Approximate gross internal area

155.8 sqm / 1677 sqft

The floor plan is not to scale and measurements and areas shown are approximate and therefore should be used for illustrative purposes only. The plan has been prepared in accordance with the RICS code of Measuring Practice and whilst we have confidence that the information, it must not be relied on. Maximum widths and lengths are represented on the floor plan. If there is any aspect of particular importance, you should carry out or commission your own inspection of the property.



020 8203 2111
www.theroundtree.com

roundtree
real estate

To register your interest:

020 8203 2111

sales@theroundtree.com

theroundtree.com

1 Sentinel Square, Brent Street Hendon, NW4 2EL

roundtree

real estate

General: While we endeavor to make our sales particulars fair, accurate and reliable, they are only a general guide to the property and, accordingly, if there is any point which is of particular importance to you, please contact the office and we will be pleased to check the position for you, especially if you are contemplating travelling some distance to view the property. Measurements: These approximate room sizes are only intended as general guidance. You must verify the dimensions carefully before ordering carpets or any built-in furniture. Services: Please note we have not tested the services or any of the equipment or appliances in this property, accordingly we strongly advise prospective buyers to commission their own survey or service reports before finalizing their offer to purchase. THESE PARTICULARS ARE ISSUED IN GOOD FAITH BUT DO NOT CONSTITUTE REPRESENTATIONS OF FACT OR FORM PART OF ANY OFFER OR CONTRACT. THE MATTERS REFERRED TO IN THESE PARTICULARS SHOULD BE INDEPENDENTLY VERIFIED BY PROSPECTIVE BUYERS OR TENANTS. NEITHER ROUNDTREE NOR ANY OF ITS EMPLOYEES OR AGENTS HAS ANY AUTHORITY TO MAKE OR GIVE ANY REPRESENTATION OR WARRANTY WHATEVER IN RELATION TO THIS PROPERTY.