

Frank Harris & Co.



Roman House, Wood Street, EC2Y

£525,000

A studio apartment finished to a very high specification featuring floor to ceiling windows, a Juliet balcony and an open plan kitchen with all modern appliances. Within walking distance of both Moorgate and St Pauls stations and the Elizabeth line at Farringdon. Many of the City's financial institutions are also in the immediate area.



Residents benefit from 24 hour concierge, on-site gym, bicycle storage in the basement, waste and recycling chute.

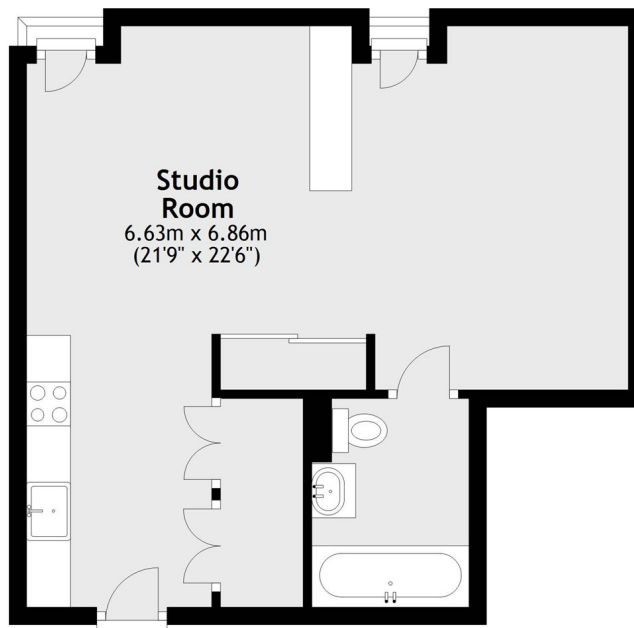
Shopping facilities are close by on Cheapside, with a full size Waitrose on Whitecross Street and an M&S food and clothing store in Moorgate. Salters Garden is just behind the building with ample spaces to sit and relax.

Roman House is located just off London Wall in the City of London. Nearest transport links are at Moorgate, Barbican, Farringdon and St. Paul's stations.

- Studio Apartment, 3rd floor • High Specification • 24 Hour Concierge •
- Resident's Gym • No Onward Chain • City of London Location •



Frank Harris & Co.



Total area: approx. 40.2 sq. metres (432.6 sq. feet)

Frank Harris & Co. Barbican and City
87 Long Lane, London,
EC1A 9ET
020 7600 7000
citysales@frankharris.co.uk

Energy Rating: B. We aim to make our particulars both accurate and reliable. However they are not guaranteed; nor do they form part of an offer or contract. If you require clarification on any points then please contact us, especially if you're traveling some distance to view. Please note that appliances and heating systems have not been tested and therefore no warranties can be given as to their good working order.

