



lettingInternational



Palliser House Ernest Street

, London, E1 4RE

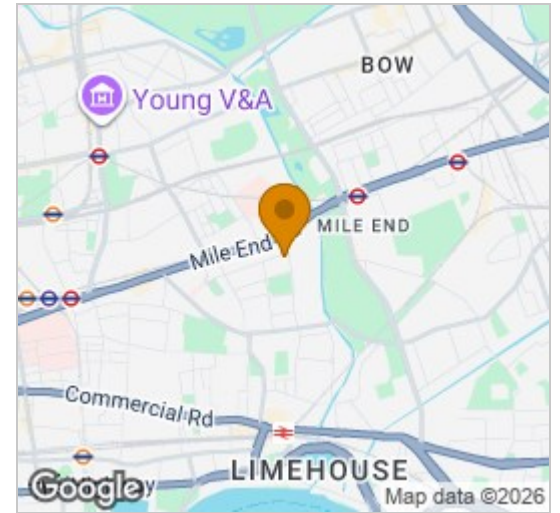
Offers Around £425,000



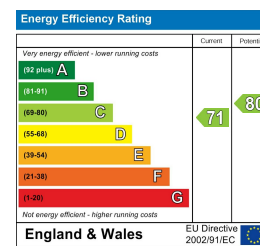
## Floor Plan



## Area Map



## Energy Efficiency Graph



## Viewing

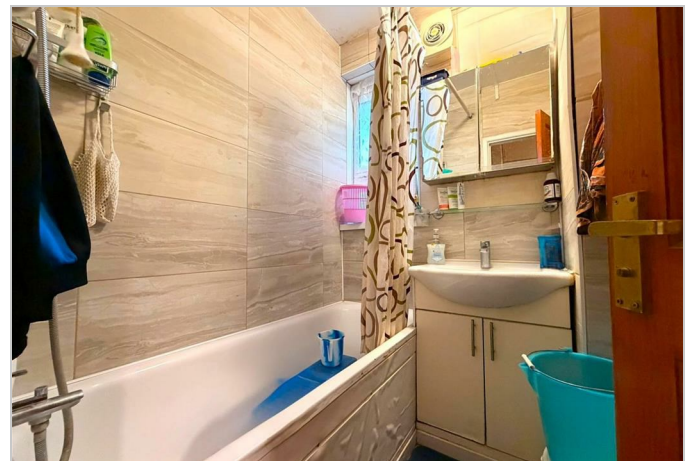
Please contact our Letting International LTD Office on 02085549999 if you wish to arrange a viewing appointment for this property or require further information.

- 1st Floor Flat
- Good Size Bedrooms
- 2 Mins Walk From Queen Mary University
- EPC Rating C
- Vacant Possession
- Balcony
- 15 mins walk from Mile End tube station (Central & District line)

A bright and spacious two-bedroom first-floor flat, ideally located close to Stepney Green and Mile End stations, offering excellent transport links via the District, Hammersmith & City, and Central lines.

The property comprises a generous lounge with access to a private balcony, a separate fitted kitchen, two double bedrooms, and a family bathroom. Presented in good condition throughout, the flat also benefits from being within easy reach of Queen Mary University.

An excellent range of local shops, cafés, and restaurants are nearby, making this a convenient and desirable location. Offered with no onward chain.



These particulars, whilst believed to be accurate are set out as a general outline only for guidance and do not constitute any part of an offer or contract. Intending purchasers should not rely on them as statements of representation of fact, but must satisfy themselves by inspection or otherwise as to their accuracy. No person in this firm's employment has the authority to make or give any representation or warranty in respect of the property.