



Earls Court Road
Earls Court, SW5

CHESTERTONS





This beautifully apartment is situated in the heart of Earl's Court. Spacious reception room with an open plan kitchen, wood flooring, good storage in both bedrooms. The kitchen benefits from oven and hob, fridge freezer and washer dryer.

- 2 bedrooms & 1 bathrooms
- 2nd floor apartment
- Close to Earls Court tube station

£2,500 pcm

Additional tenant charges apply (fees apply to non-AST tenancies only)
 Tenancy Agreement Fee: £300
 References per Tenant/Guarantor: £60
 Inventory check (approx. £100 – £250 inc. VAT)
chestertons.co.uk/property-to-rent/applicable-fees

Energy Efficiency Rating		Current	Potential
95-100	A		
81-94	B		
69-80	C		
55-68	D	53	68
39-54	E		
21-38	F		
1-20	G		

Not energy efficient - higher running costs

England, Scotland & Wales EU Directive 2002/91/EC

Minimum Term: 6 months
Deposit Required: £2,884.62
Local Authority: Royal Borough of Kensington & Chelsea
Council Tax Band: E
EPC Rating: D
Furnished, Part Furnished

Chestertons South Kensington Lettings

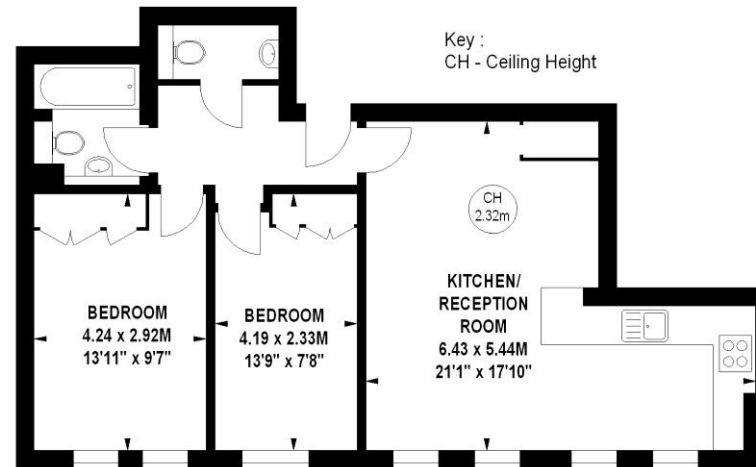
44-48 Old Brompton Road
 South Kensington
 London
 SW7 3DY

southkensingtonlettingsusers@chestertons.co.uk
 02075891244

Earls Court Road, SW5

Approximate gross internal area

671 sq ft / 62.34 sq m



Second Floor

The floor plan is not to scale and measurements and areas shown are approximate and therefore should be used for illustrative purposes only. The plan has been prepared in accordance with the RICS code of Measuring Practice and whilst we have confidence in the information produced, it must not be relied on.

If there is any aspect of particular importance, you should carry out or commission your own inspection of the property.

Copyright of FeaturePRO.

